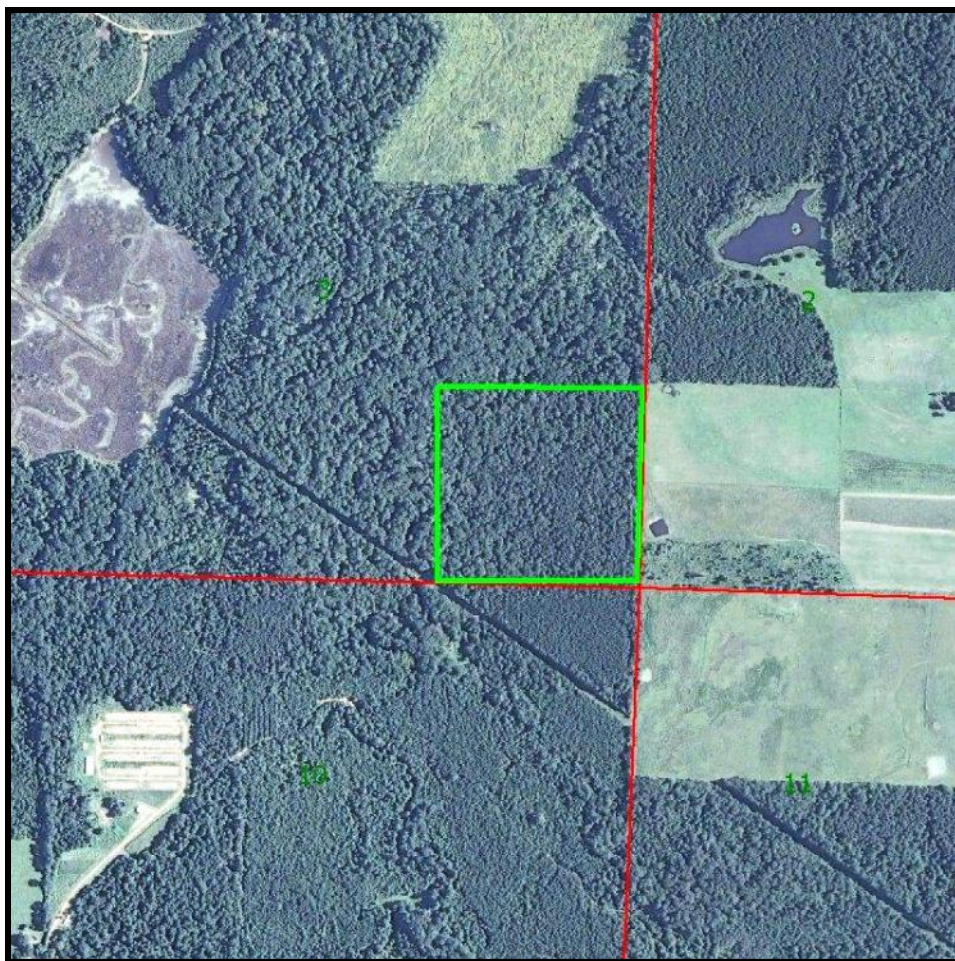


Tallabogue

42 Acres +/-
Scott County, MS



CONTACT:
J. PARKER SARTAIN
601.506.2398
psartain@sartainsheritage.com

Sartain's Heritage Properties
106 First Choice Drive
Madison, MS 39110
Phone: 601-856-2720
Fax: 601-853-6765
www.SartainsHeritage.com

42 +/- acres located off South King Road near Harperville, MS. The property consists of 10.8 acres of 16 year pine and 31.6 acres of Hardwoods. There is a creek running through the northeast portion of the property. Access is across adjoiners pasture to the east.

\$72,343.00

