

L&L Farms, Inc.

October 26, 2011

Crystal Lake Airport

- Crystal Lake Airport is positioned between Farms 1 & 2.
- Each Farm is approximately 400 acres
- The length of the runway is 3,865 feet.
- 3 Separate hangers with approximately 16,000 square feet of usable space.

©2010 Google

© 2011 Google

Imagery Date: 9/2/2010 1994

36°20'23.55" N 94°26'24.72" W elev 1161 ft

Eye alt 3625 ft

Farm #1

- 27 Poultry Houses (200,000 sqft+)
- 393 Acre section of Farm
- Able to be Certified Organic
- Hatchery capable of hatching 300,000 chicks/week

Farm #2

- 12 Poultry Houses (126,000 sqft)
- 390 Acre section of Farm
- Able to be Certified Organic

Farm #3

- 22 Poultry Houses (308,000 sqft)
- 530 Acre section of Farm
- Able to be Certified Organic



GPS.MotionX.com
MotionX news & updates

Image State of Arkansas

© 2010 Europa Technologies
© 2010 Google

36°21'05.99" N 94°25'50.80" W elev 0 m

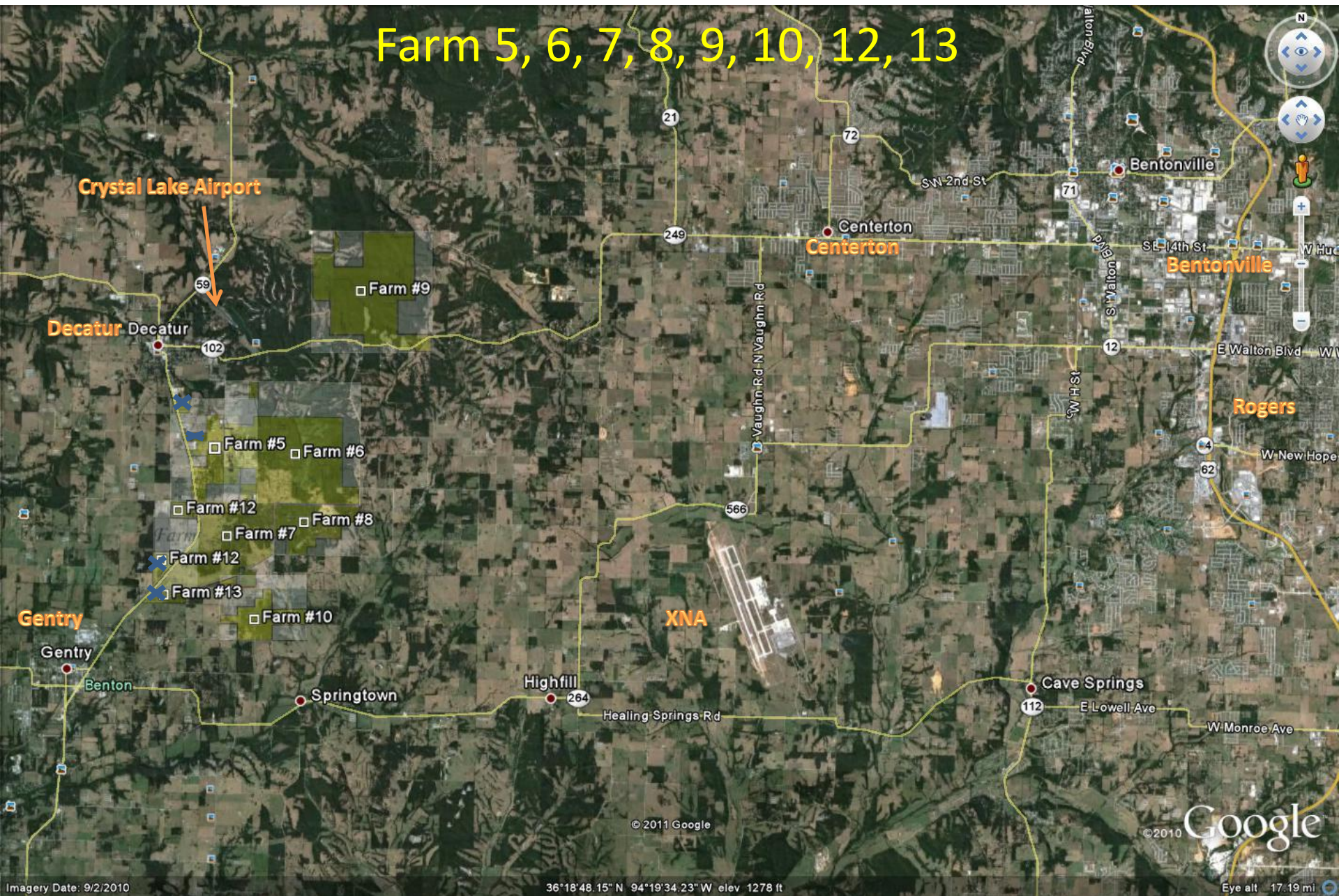
MotionX
by fastpower

©2009 Google

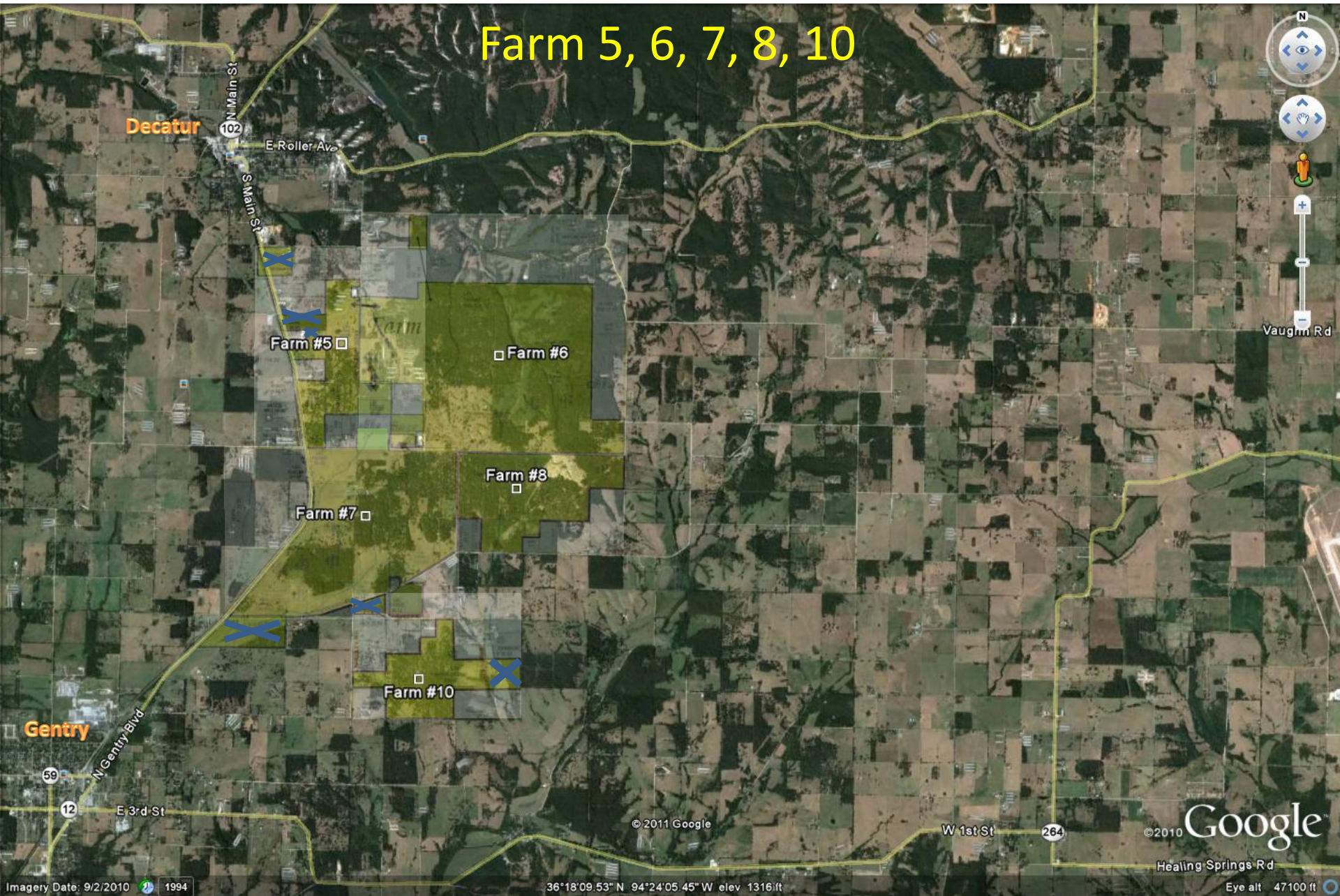
Imagery Date: Mar 5, 2009

Eye alt 725 m

Farm 5, 6, 7, 8, 9, 10, 12, 13



Farm 5, 6, 7, 8, 10



Farm 5

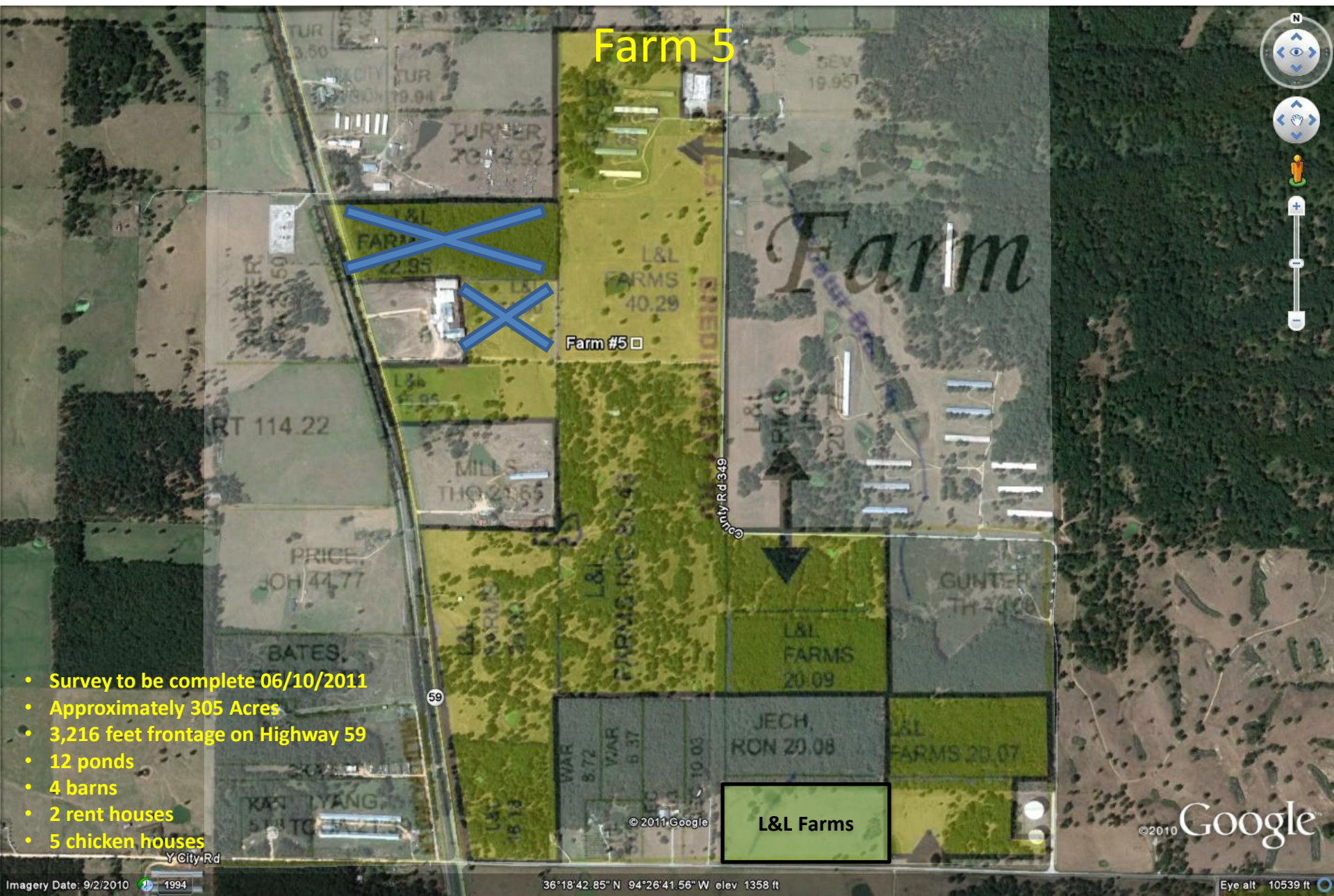


Farm #5

Farm

- Survey to be complete 06/10/2011
- Approximately 305 Acres
- 3,216 feet frontage on Highway 59
- 12 ponds
- 4 barns
- 2 rent houses
- 5 chicken houses

L&L Farms



© 2010 Google

Farm 6

□ Farm #6

- Approximately 1,265 Acres
- Borders Bredeheoft Rd & Y City Rd
- 20+ ponds (7 with springs)
- 6 springs
- 2 barns
- 2 rent houses
- 11 chicken houses

© 2011 Google

© 2010 Google

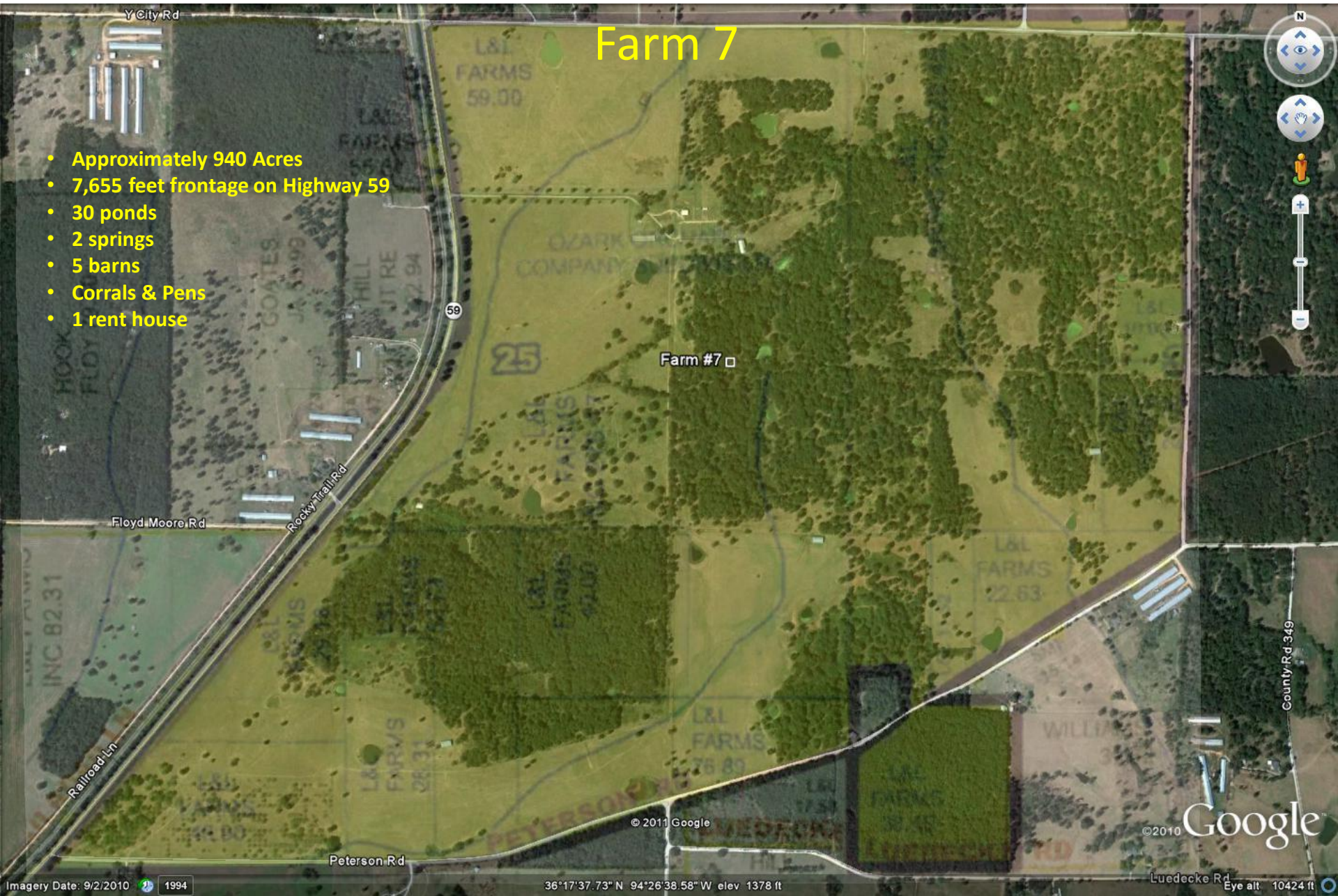
Imagery Date: 9/2/2010 1994

36°18'41.28" N 94°25'32.06" W elev 1361 ft

Eye alt 12040 ft

Farm 7

- Approximately 940 Acres
- 7,655 feet frontage on Highway 59
- 30 ponds
- 2 springs
- 5 barns
- Corrals & Pens
- 1 rent house



© 2011 Google

© 2010

Google

Imagery Date: 9/2/2010 1994

36°17'37.73" N 94°26'38.58" W elev 1378 ft

Lueddecke Rd Eye alt 10424 ft

Farm 8

Y City Rd

Stillys Hill Rd

Farm #8

- Approximately 420 Acres
- 6 ponds
- 2 barns

Peterson Rd

County Rd 349

© 2011 Google

© 2010 Google

Imagery Date: 9/2/2010 1994

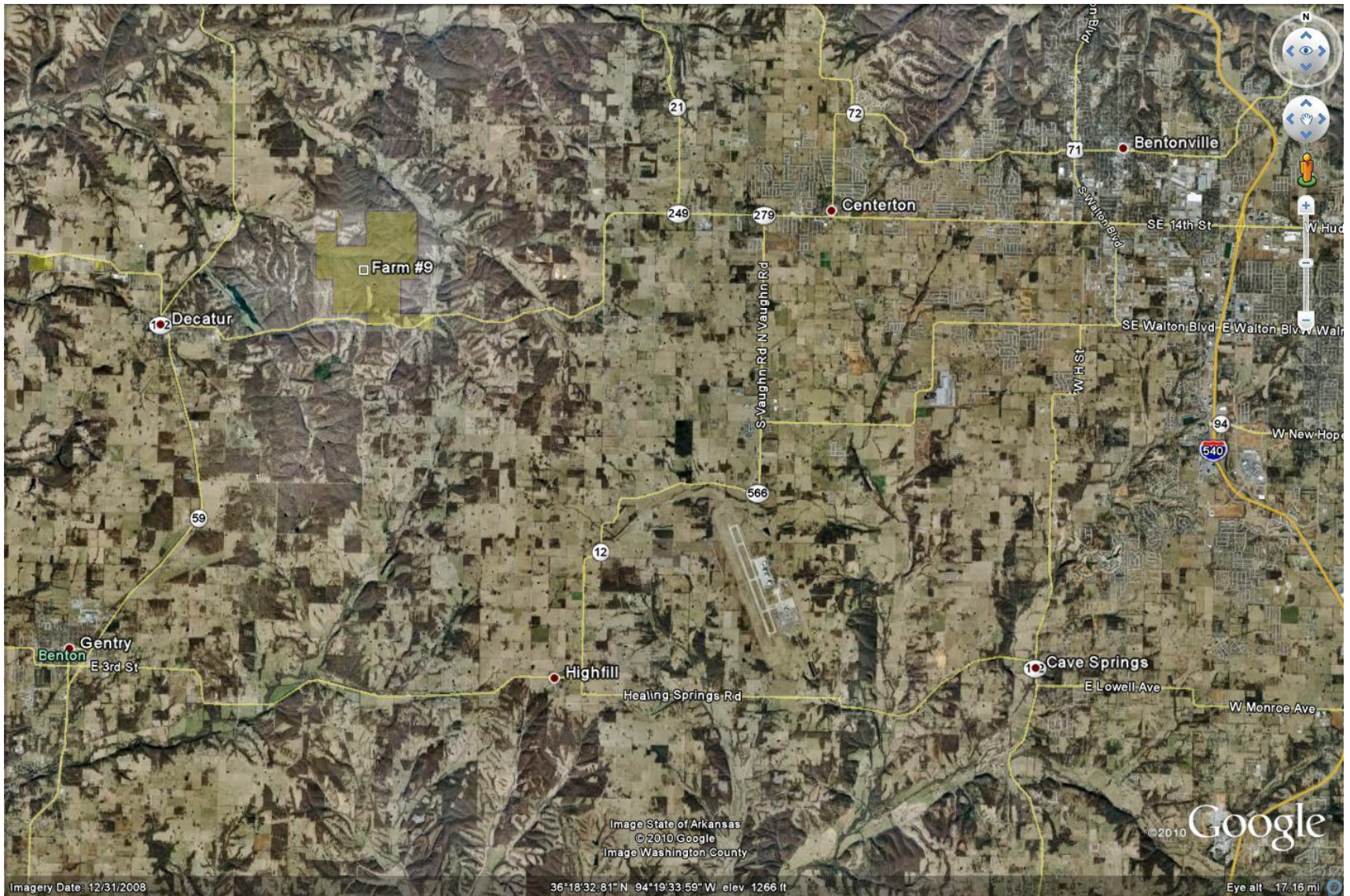
36°17'49.13" N 94°25'12.38" W elev 1338 ft

Eye alt 9004 ft

Farm 9 (Highway 102, 1,175 acres)



Farm 9 (Highway 102, 1,175 acres)



Farm 10

- Approximately 302 Acres
- 10 ponds
- 1 barns

L&L Farms

Farm #10

Sold
This section
only (34.4
acres)

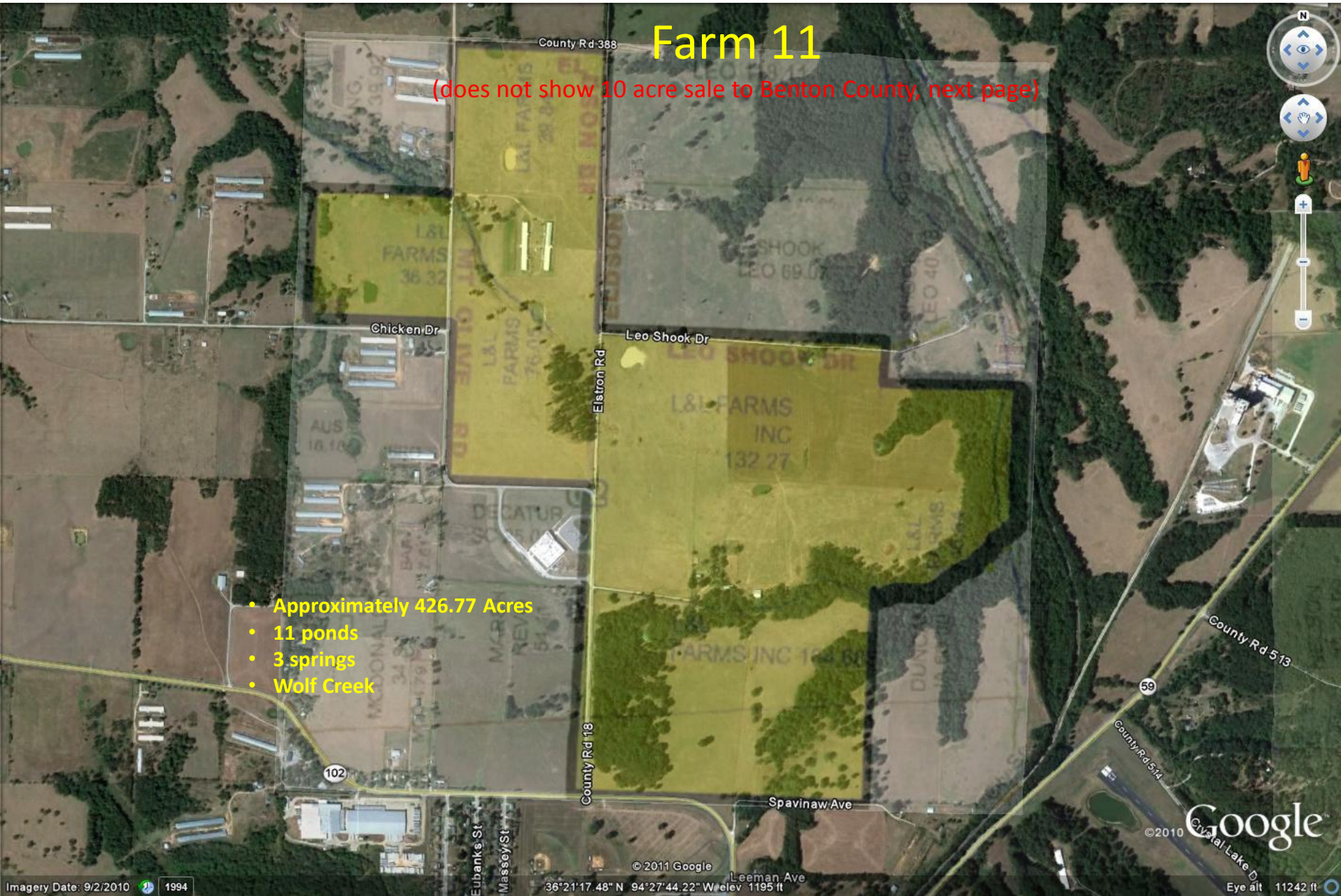
© 2011 Google

© 2010 Google

Farm 11

(does not show 10 acre sale to Benton County, next page)

- Approximately 426.77 Acres
- 11 ponds
- 3 springs
- Wolf Creek



Farm 11

Benton County Base Map

Spatial Bookmarks:

100

Layers **Legend**

LAYERS

- Cadastral
- DEM
- Environmental
- Places
- Planning
- Topography
- Transportation
- US PLSS
- Base Map
- 2008 Aerials
- 2009 Aerials
- 2010 Aerials
- ☒ 2011 Aerials
- USGS Quads
- County
- Fire Districts
- House Districts
- JP Districts
- Law Enforcement
- Road Supervisor
- School Districts
- Senate Districts
- Soils

Refresh Map

☒ Auto Refresh

Property Search

Road Name
(Central)

Go

Partial
(E Central)
or Full Address
(215 E Central Ave)

Go

Parcel ID
(12-34567-890)

Go

Subdivision
(Bentonville Original)

Parcels

Rec	AR County	Parcel ID	Owner Name	Physical Address	Assessed Value	S-T-R
1	Report	08-00612-000	L&L FARMS INC		590	01-19-33

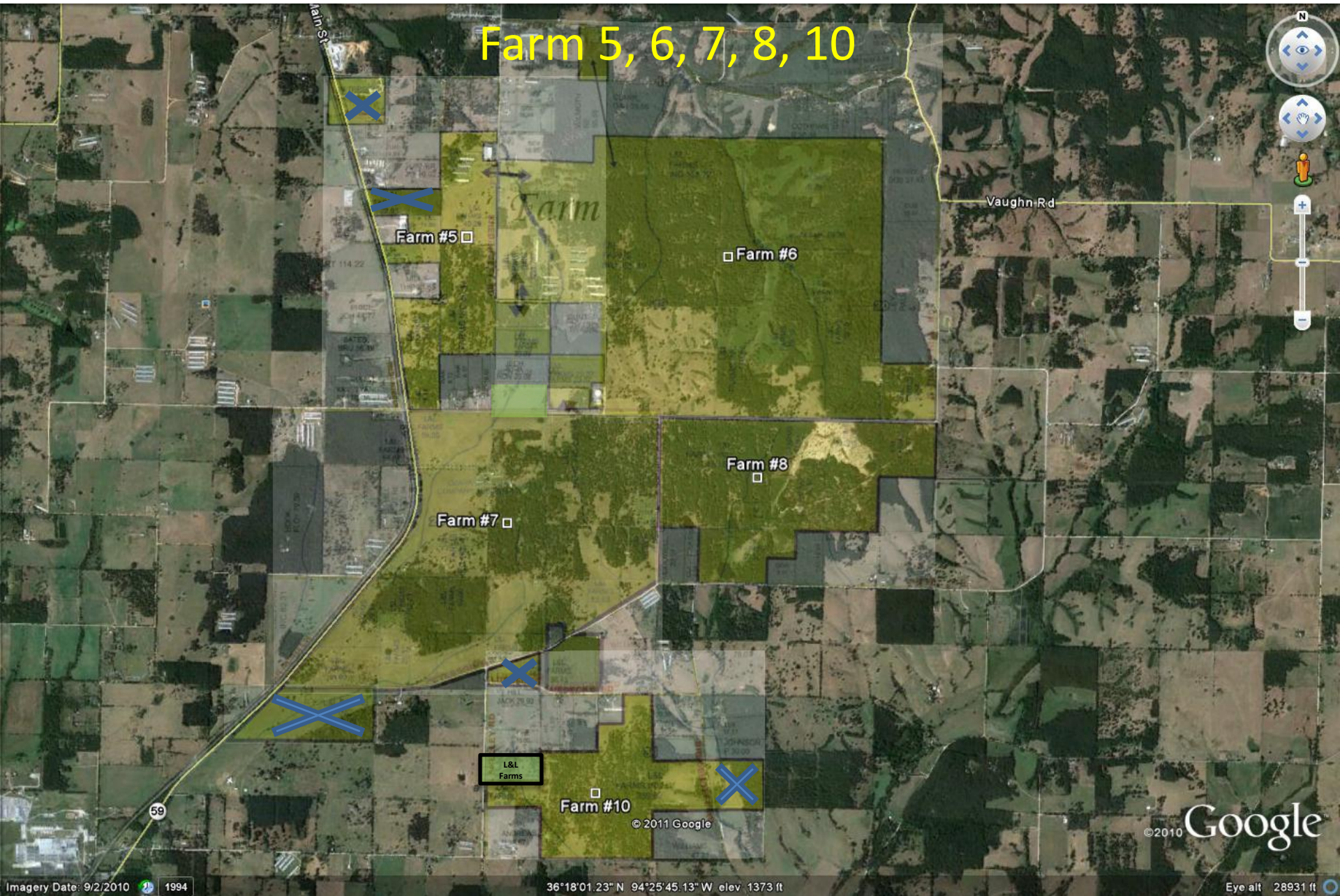
Benton County - Copyright (C) Wed Oct 26 2011 08:30:05 GMT-0500 (Central Daylight Time)

0 2491ft

Identify

Scale 1: 11212 **Go**

Farm 5, 6, 7, 8, 10



Farm #5

Farm #6

Farm #8

Farm #7

Farm #10

L&L
Farms

© 2010 Google

© 2010 Google

Imagery Date: 9/2/2010 1994

36°18'01.23" N 94°25'45.13" W elev 1373 ft

Eye alt 28931 ft

Farm 13 (90 Acres Highway 59/Peterson Rd, Gentry, AR)



Click or Drag an area to zoom in.



Farm 14 (Parcels B, C, E) (Benton County Base Map)

Webpage Screenshot

Benton County Base Map

Spatial Bookmarks:

Layers Legend

- Cadastral
- IDEM
- Environmental
- Places
- Planning
- Sex Offenders
- Topography
- Transportation
- US PLSS
- Base Map
- 2008 Aerials
- 2009 Aerials
- 2010 Aerials
- USGS Quads
- County
- Fire Districts
- House Districts
- JP Districts
- Law Enforcement
- Road Supervisor
- School Districts
- Senate Districts
- Soils

Refresh Map

Auto Refresh

Sex Offender Near You?

Now Located At:
Benton County Sheriff's Office

Property Search

Road Name
(Central)

Go

Partial
(E Central)
or Full Address
(215 E Central Ave)

Go

Parcel ID
(12-34567-890)

Go

Subdivision
(Bentonville Original)

Parcels

Rec	AR County	Parcel ID	Owner Name	Physical Address	Assessed Value	S-T-R
1	Report	18-15284-000	L&L FARMS INC	CO RD 505 BENSON RD	5050	31-20-33

Identify

Scale 1: 15609

Go

http://gis.co.benton.ar.us/website/BaseMap/viewer.htm

Farm 14-E



- 112 acres with the Spavinaw Creek bordering most of the perimeter of the property.
- 21.4 miles from the highway 102 and Walton Blvd. intersection in Bentonville (30 minute drive).

Farm 14 Woodlot (Benton County Base Map)

Webpage Screenshot

Benton County Base Map

Spatial Bookmarks:

Layers Legend

- Cadastral
- IDEM
- Environmental
- Places
- Planning
- Sex Offenders
- Topography
- Transportation
- US PLSS
- Base Map
 - ☐ 2008 Aerials
 - ☐ 2009 Aerials
 - ☒ 2010 Aerials
 - ☐ USGS Quads
- County
 - ☐ Fire Districts
 - ☐ House Districts
 - ☐ JP Districts
 - ☐ Law Enforcement
 - ☐ Road Supervisor
 - ☐ School Districts
 - ☐ Senate Districts
 - ☐ Soils

Refresh Map

☒ Auto Refresh

Sex Offender Near You?

Now Located At:
Benton County Sheriff's Office

Property Search

Road Name
(Central)

Partial
(E Central)
or Full Address
(215 E Central Ave)

Parcel ID
(12-34567-890)

Subdivision
(Bentonville Original)

Identify

Scale 1: 15609

Copyright (C) Mon Mar 14 2011 16:43:55 GMT-0500 (Central Daylight Time)

Farm 14-Woodlot
146.67 acres Timber

Parcels

Rec	AR County	Parcel ID	Owner Name	Physical Address	Assessed Value	S-T-R
1	Report	18-14297-000	PETERSON FARMS INC	HWY 102 (N SIDE) 3150		06-19-33

http://gis.co.benton.ar.us/website/BaseMap/viewer.htm

[illegible]

Farm 17-B

Delaware Jay 59 S Main St N Main St Brush Creek Sycamore 20

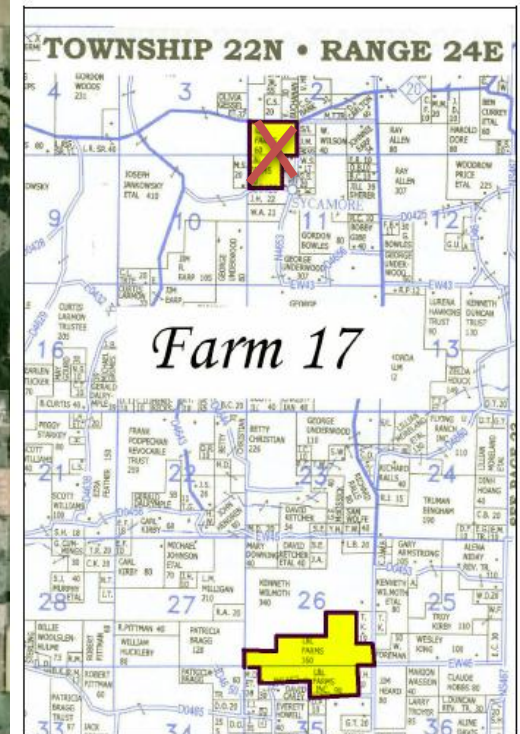
Farm 17 - B

TOWNSHIP 22N • RANGE 24E

Farm 17

GPS MotionX.com MotionX news & updates

© 2010 Google
© USFWS
Image USDA Farm Service Agency
36°22'55.82" N 94°43'48.49" W elev 0 m
Eye alt 14.31 km



Farm 17-B

Farm 17 - B

Farm	Description	Pasture	Woods	Total	S-T-R
1	Airport/R&D Farm	176.04	175.20	351.24	1/12-19-33, 7-19-32
2	South Side Turkey Ridge Rd.	107.26	268.30	375.56	12-19-33, 7-19-32
3	North Side Turkey Ridge Rd.	251.06	274.07	525.13	1-19-33, 6/7-19-32
5	HWY 59 to Bredehoeft Rd	249.02	85.42	334.44	13/24-19-33, 19-19-32
6	Bredehoeft Rd/Y City Rd.	632.74	705.91	1,338.65	13/24-19-33, 17/18/19/20-19-32
7	HWY 59/Peterson Rd	553.42	385.90	939.32	25/36-19-33, 30/31-19-32
8	Peterson Rd	73.71	346.27	419.98	29/30-19-32
9	HWY 102/Guest House	124.43	1,050.40	1,174.83	4/5/8/9-19-32
10	Past HWY 59 & Peterson Rd	139.23	156.82	296.05	31-19-32, 36-19-33
11	HWY 102 by new school	320.62	82.76	403.38	1/2-19-33, 35-20-33
12	HWY 59 West of Railroad	-	53.26	53.26	25-19-33
14	HWY 72	170.24	397.15	567.39	
17	OK/by Keithly Store	-	350.15	350.15	26-22-24
18	SW of Jay, OK (Kenwood Rd)	-	84.22	84.22	8/9-21-23
19	HWY 102 NW of Decatur	23.72	38.10	61.82	3-19-33
20	HWY 102 NW of Decatur	-	-	-	3-19-33
		2,821.49	4,453.93	7,275.42	