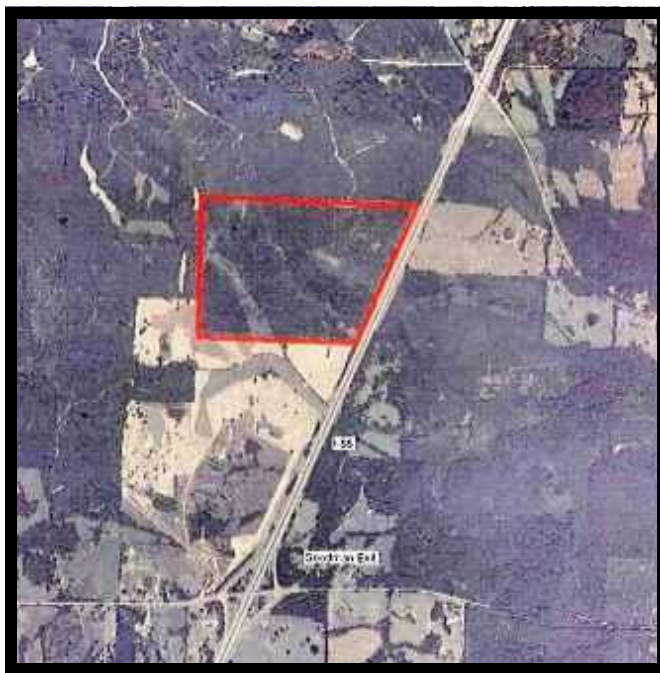


Goodman 222

222 ac. +/-
Holmes County, MS



Wondering how to get Big Black River deer genetics and dirt without paying Big Black River premium prices?

Buy in the bluff hills a few miles from the river!

Located near the Goodman exit less than 5 miles from the Big Black River on the west side of I-55 in the famous big buck zone of Big Cypress Creek/Greens Creek, this property has it all- big bucks, big gobblers, big bass and hardwood and pine timber- all within a one hour drive of downtown Jackson.

Priced to sell at **\$1995 per acre**. Payments less \$1000 per month each for two guys to OWN this property! Buy now before interest rates shoot up and you get caught on the outside looking in with no land to call your own.

Owner ready to consolidate his land in the Delta where he built a lodge and just killed a 170"+ monster buck with his bow. No reasonable offer refused!

Call T. Logan at 601-259-4789 to schedule your showing today.

CONTACT:

T. LOGAN RUSSELL
601.259.4789

lrussell@sartainsheritage.com

Sartain's Heritage Properties
 106 First Choice Drive
 Madison, MS 39110
 Phone: 601-856-2720
 Fax: 601-853-6765
www.SartainsHeritage.com

