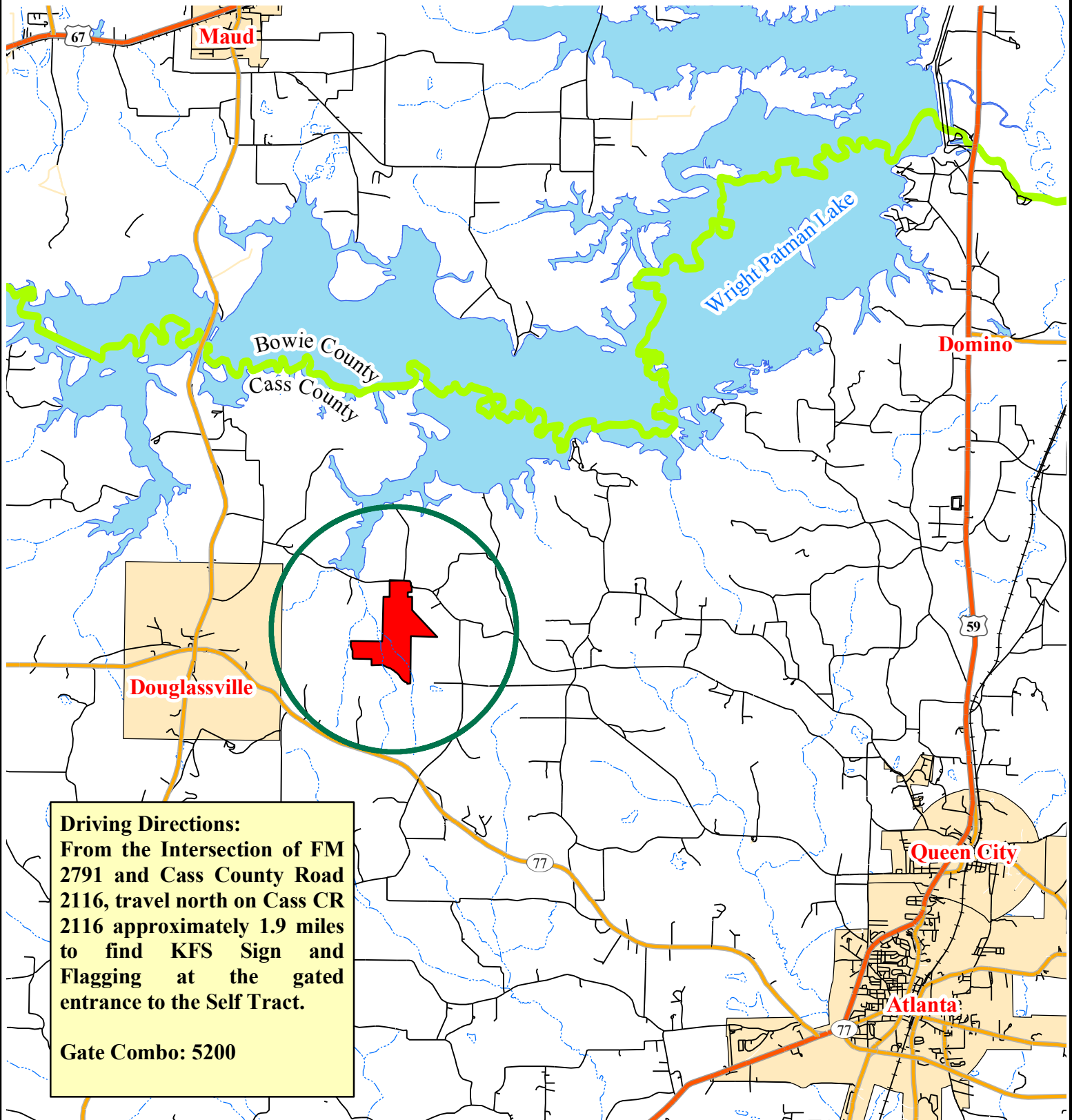


Land For Sale
Self Tract (#7108)

+/-509 Acres

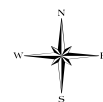
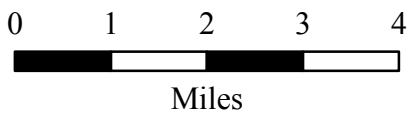
Pt. of J. Baty HRS (A-88), J. Graham HRS (A-398), & J.S. Hamilton HRS (A-490)
Cass County, Texas



Driving Directions:

From the Intersection of FM 2791 and Cass County Road 2116, travel north on Cass CR 2116 approximately 1.9 miles to find KFS Sign and Flagging at the gated entrance to the Self Tract.

Gate Combo: 5200

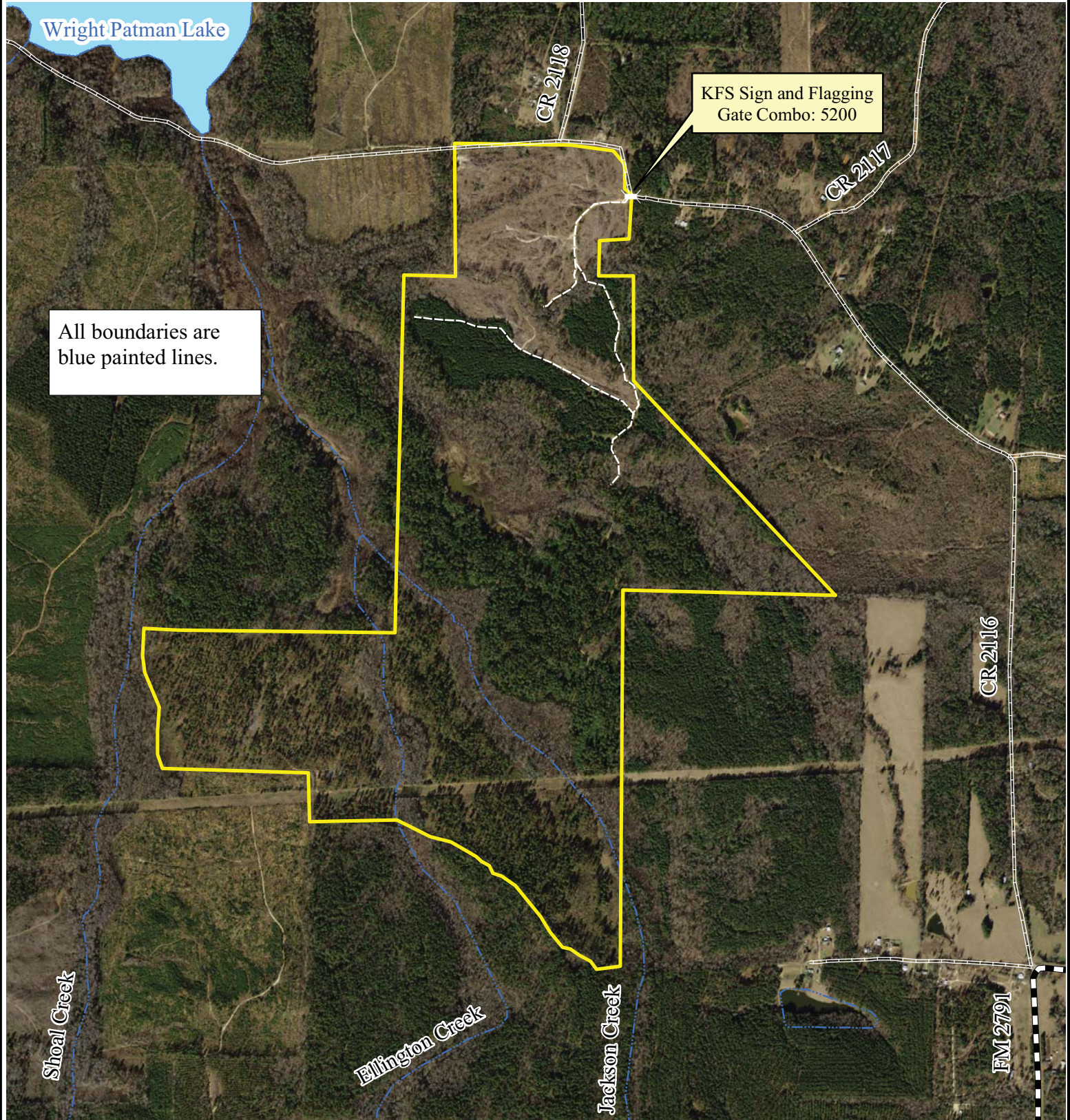


StreetMap USA
August 2011
Printed By: RDH

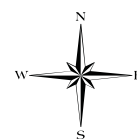
Land For Sale
Self Tract (#7108)

+/-509 Acres

Pt. of J. Baty HRS (A-88), J. Graham HRS (A-398), & J. S. Hamilton HRS (A-490)
Cass County, Texas



0 0.5
Miles

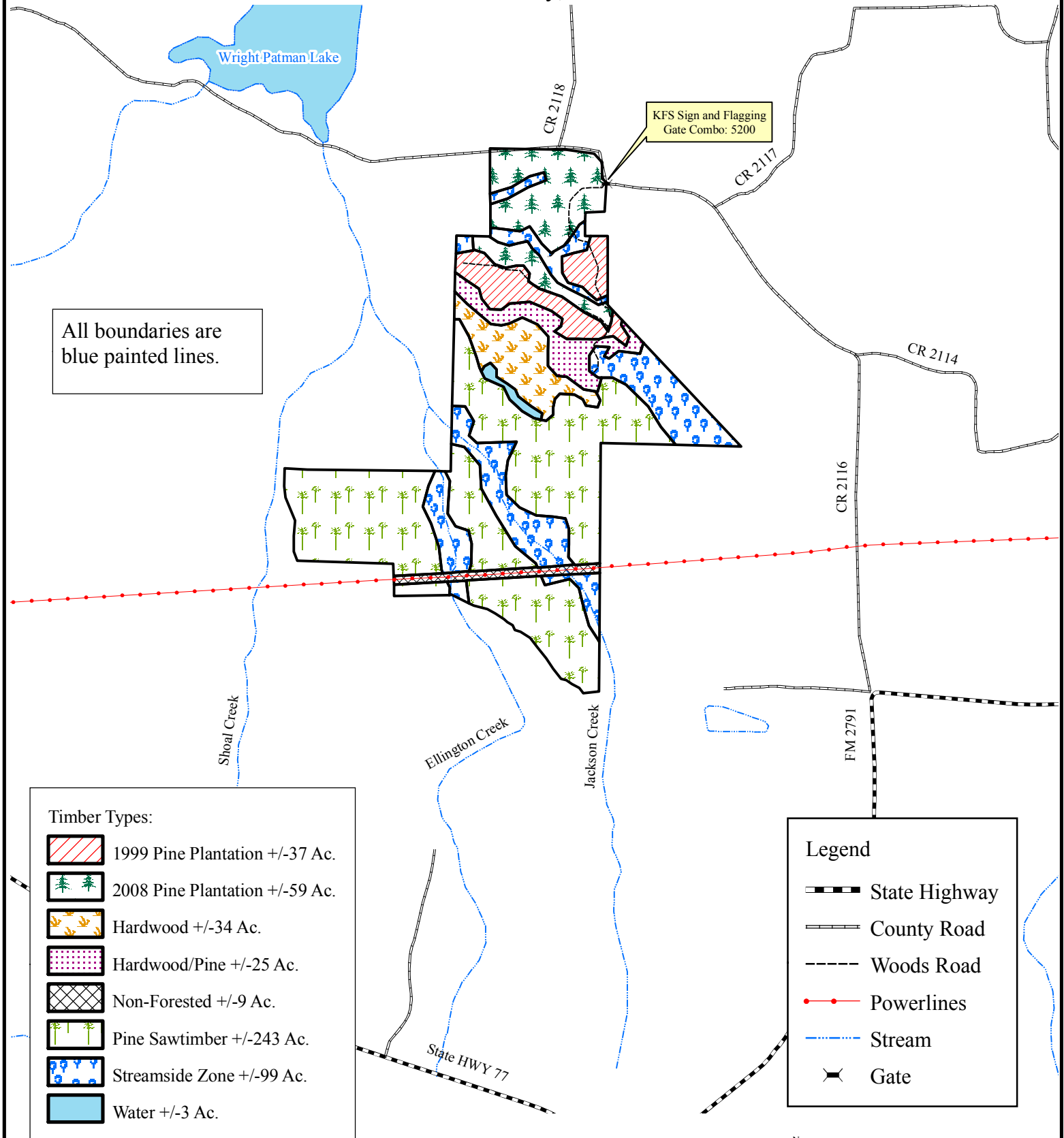


2009 TX DOQQ
August 2011
Printed By: RDH

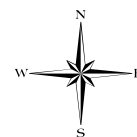
Land For Sale
Self Tract (#7108)

+/-509 Acres

Pt. of J. Baty HRS (A-88), J. Graham HRS (A-398), & J. S. Hamilton HRS (A-490)
Cass County, Texas



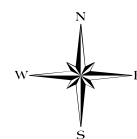
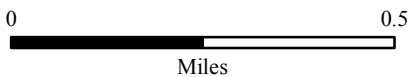
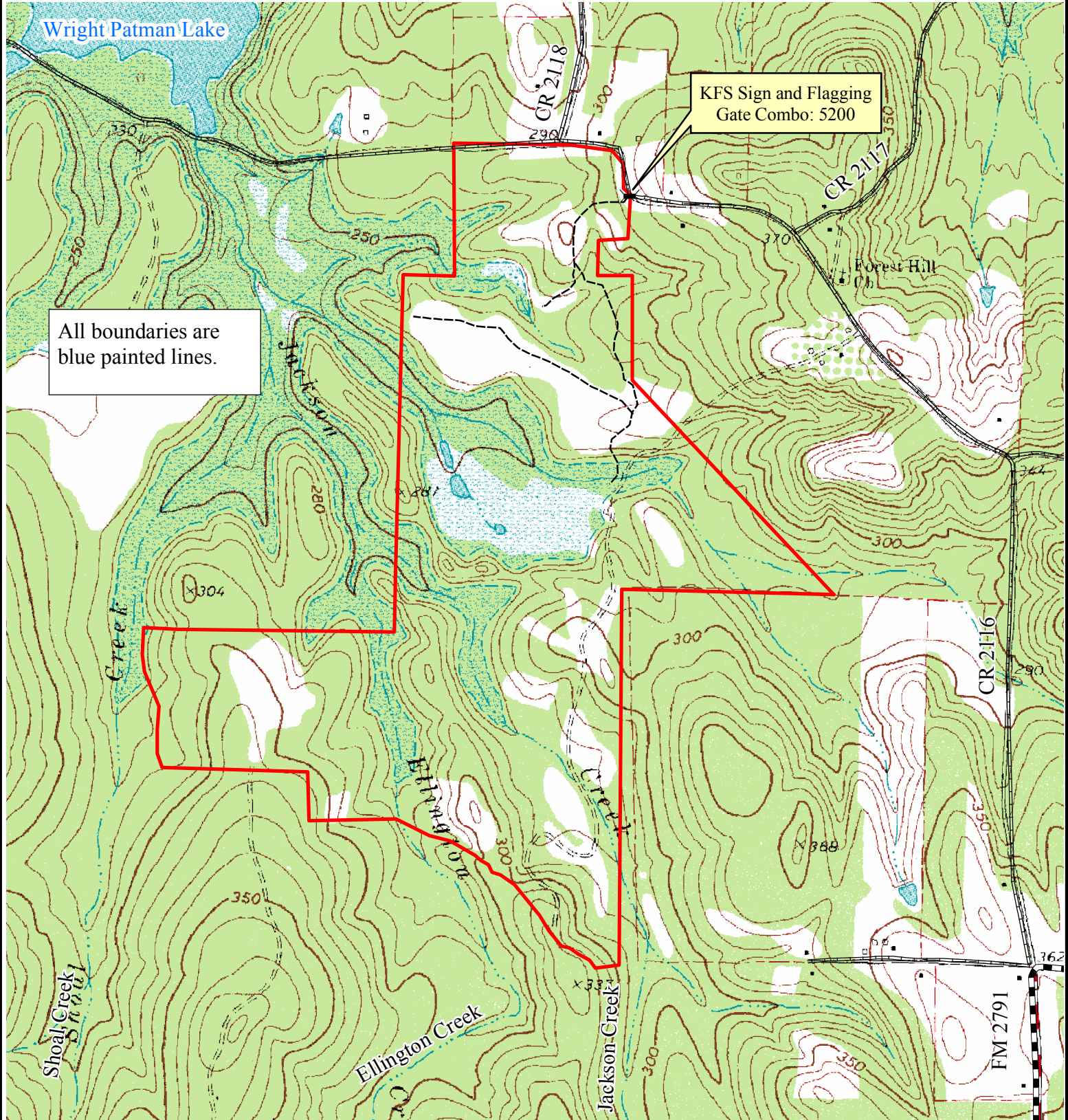
0 0.5
Miles



Land For Sale
Self Tract (#7108)

+/-509 Acres

Pt. of J. Baty HRS (A-88), J. Graham HRS (A-398), & J. S. Hamilton HRS (A-490)
Cass County, Texas



TX DRG
August 2011
Printed By: RDH