

FOR SALE

Productive Cropland
Excellent Location near the
Intersection of SR 135 & SR 44



25^{+/-} Acres
Mostly Tillable



Dave Bonnell
Columbus, IN
812-343-4313
daveb@halderman.com



Michael Bonnell
Columbus, IN
812-343-6036
michaelb@halderman.com

HALDERMAN
REAL ESTATE
SERVICES

HLS# PDB-10683 (11)

800.424.2324 | www.halderman.com

PROPERTY INFO

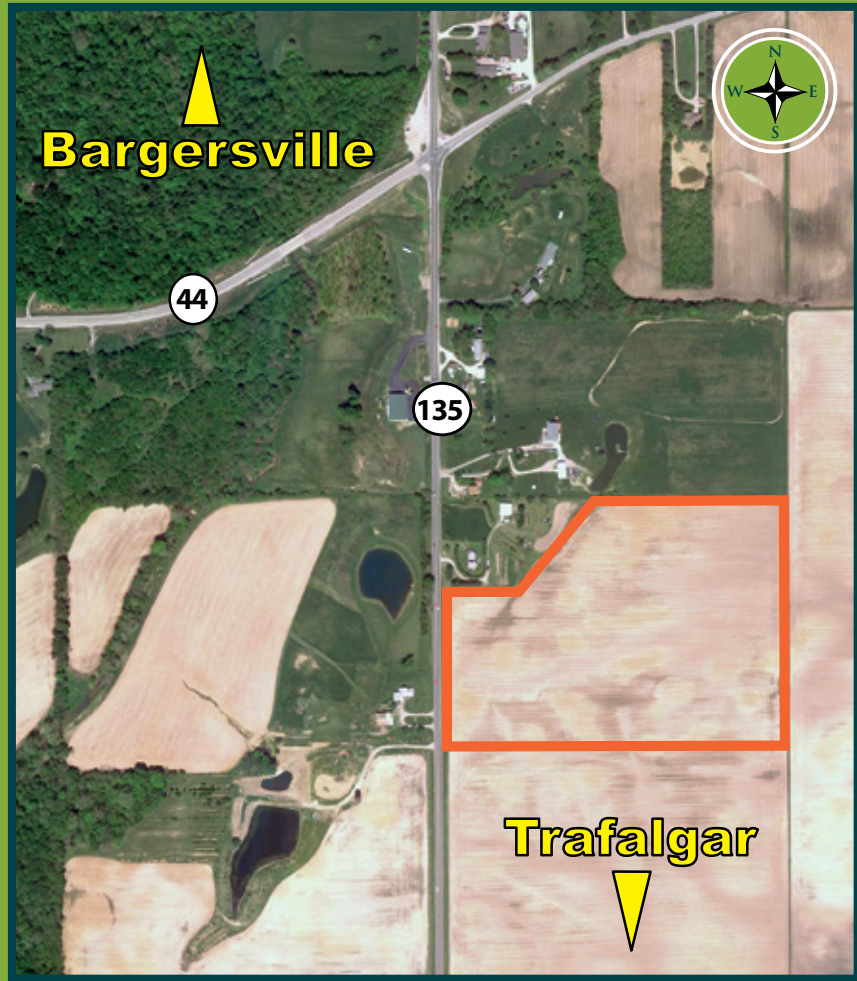
LOCATION: On the east side of SR 135, approximately .25 miles south of SR 44, between Bargersville and Trafalgar

ZONING: Agricultural

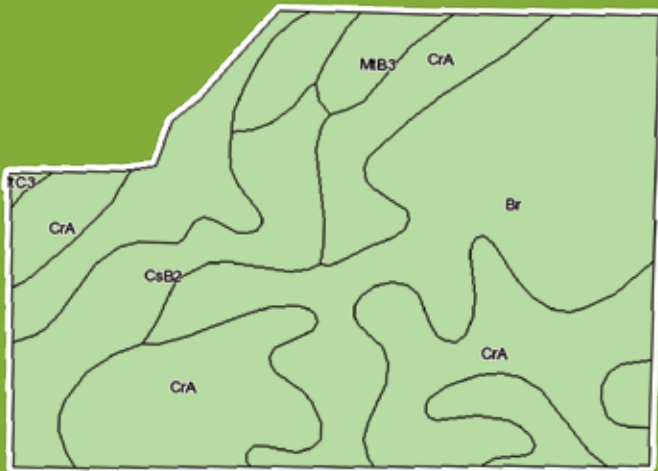
SCHOOL DISTRICT: Franklin Community School Corporation

TOPOGRAPHY: Level - Gently Rolling

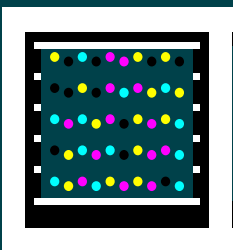
ANNUAL TAXES: \$600.00 (est.)



SOILS INFO



Code	Soil Description	Acres	Corn	Soybeans
Fsa borders provided by the Farm Service Agency as of May 23, 2008. Soils data provided by USDA and NRCS.				
Br	Brookston silty clay loam	11.6	145	51
CrA	Crosby silt loam, 0 to 2 percent slopes	9.8	105	37
CsB2	Crosby-Miami silt loams, 2 to 4 percent slopes, eroded	3.1	100	35
MtB3	Miami clay loam, 2 to 6 percent slopes, severely eroded	0.6	100	35
MtC3	Miami clay loam, 6 to 12 percent slopes, severely eroded	0.1	90	32
Weighted Average			122.6	43.1



Take a picture with a QR reader on your smart phone and jump to our website!

Get the free mobile app for your phone <http://gettag.mobi>

HALDERMAN
REAL ESTATE
SERVICES

HLS# PDB-10683 (11)



800.424.2324 | www.halderman.com