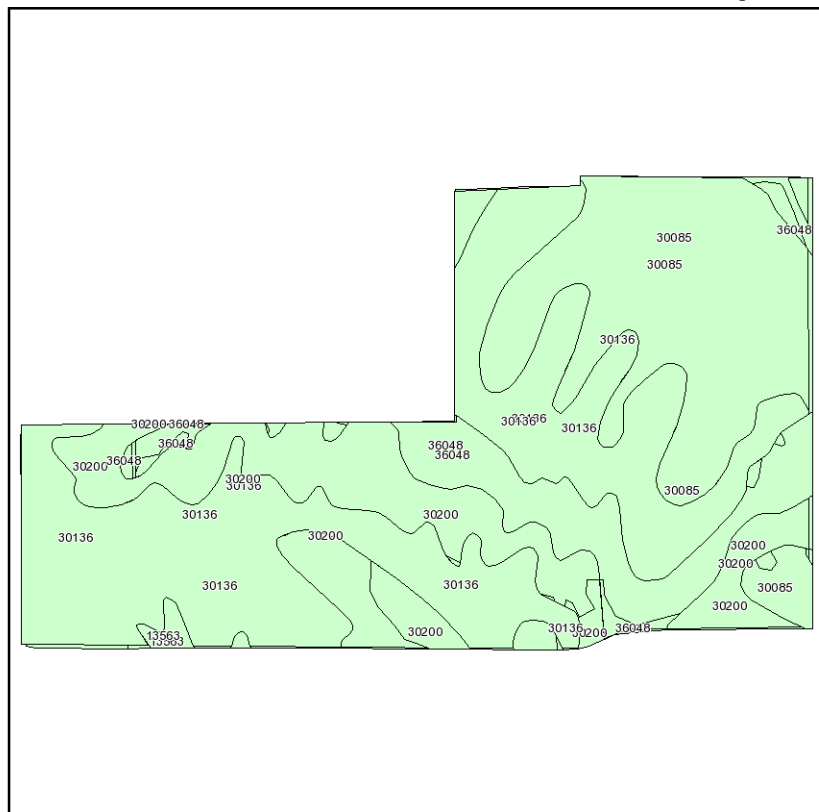
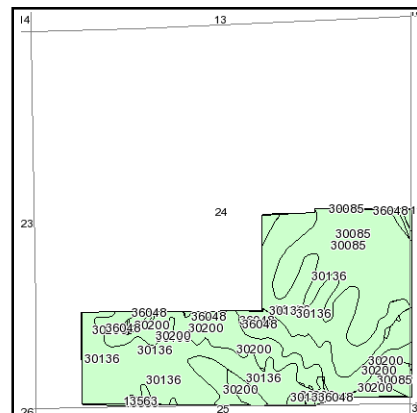


Soils Map



Fsa borders provided by the Farm Service Agency as of May 23, 2008.
Soils data provided by USDA and NRCS.



State: **Missouri**
County: **Daviess**
Location: **024-059N-028W**
Township: **Liberty**
Acres: **408.6**
Date: **8/19/2011**



Code	Soil Description	Acres	Percent of field	Non-Irr Class
30136	Lamoni loam, 5 to 9 percent slopes	171.9	42.1%	IIIe
30085	Grundy silt loam, 2 to 5 percent slopes	107.7	26.4%	Ile
30200	Shelby loam, 9 to 14 percent slopes	79.9	19.6%	IVe
36048	Zook silt loam, 0 to 2 percent slopes, occasionally flooded	46.6	11.4%	IIw
13563	Nodaway silt loam, 0 to 2 percent slopes, occasionally flooded	2.5	0.6%	IIw