

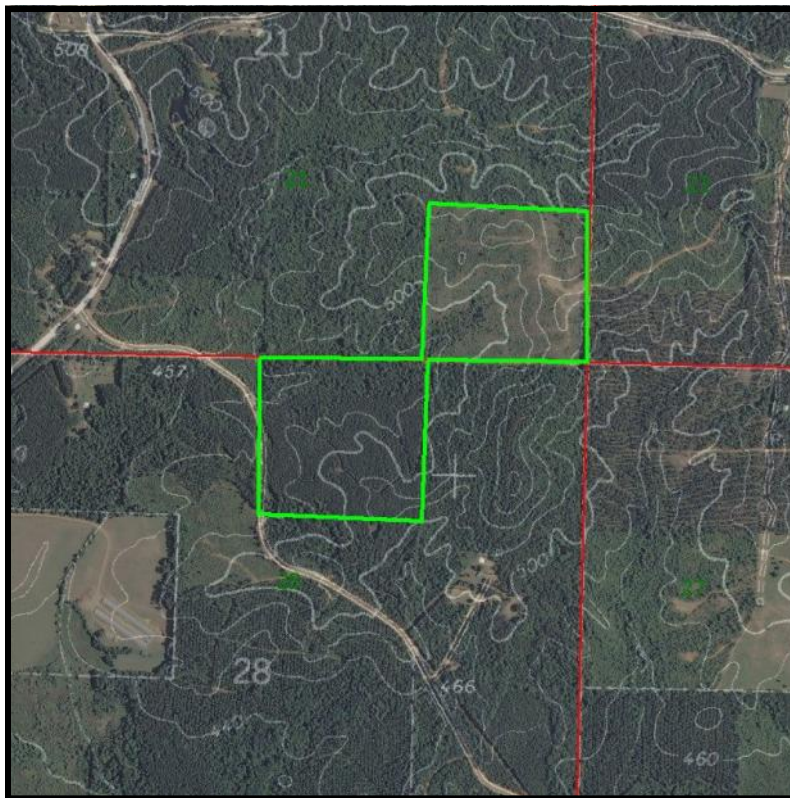
Catty Corner

82 Acres +/-
Winston County, MS



CONTACT:
J. PARKER SARTAIN
601.506.2398
psartain@sartainsheritage.com

Sartain's Heritage Properties
106 First Choice Drive
Madison, MS 39110
Phone: 601-856-2720
Fax: 601-853-6765
www.SartainsHeritage.com



Catch a morning deer hunt before driving to Starkville for SEC Football in the fall!

Perfectly located in Winston County, 4 miles south of Hwy. 25 fronting Elijah Graham Road off Hwy 395. Easy driving to Starkville (40 miles), Louisville (12 miles) & Philadelphia (12 miles).

Utilities are available to the property where you can construct a nice get-a-way cabin nestled in the forest. The property consists of 30 acres of 12 year old pine, 12 acres of mixed hardwoods/pine and 39 acres of 3 year old pine.

Watch your timber investment grow while you watch top notch college sports for years to come.

\$167,725.00