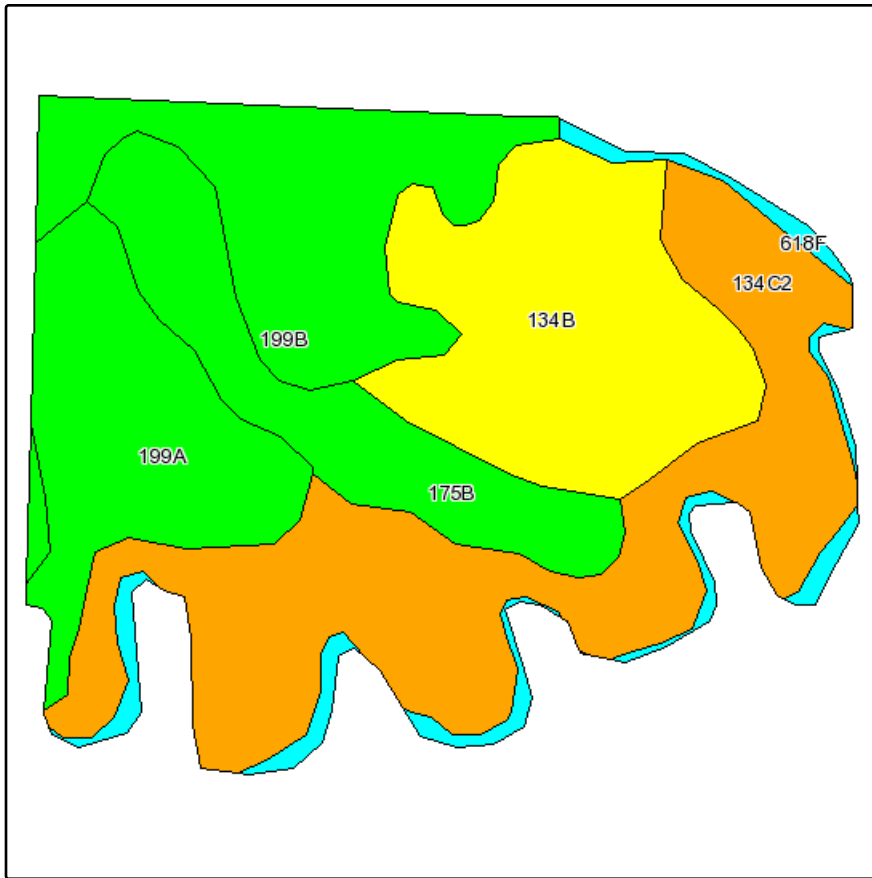
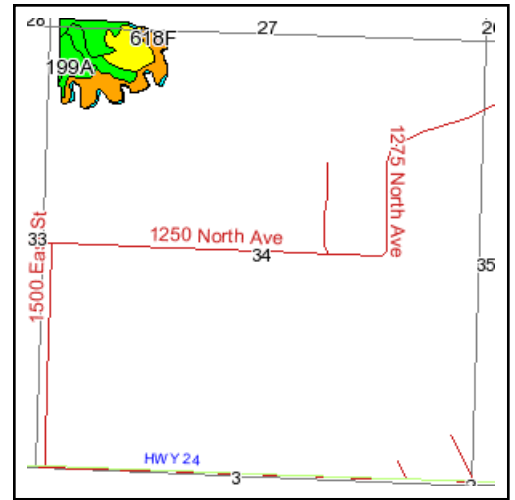


Soils Map



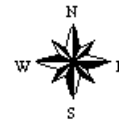
Fsa borders provided by the Farm Service Agency as of May 23, 2008.
Soils data provided by USDA and NRCS.
PLSS provided by Illinois State Geological Survey.



State: **Illinois**
County: **Bureau**
Location: **034-016N-008E**
Township: **Wyanet**
Acres: **24.4**
Date: **3/25/2011**



Capital
Agricultural
Property
Services, Inc.



Maps provided by:



©AgriData, Inc 2008
www.AgriDataInc.com

Code	Soil Description	Acres	Percent of field	Il. State Productivity Index Legend	Corn Bu/A	Soybeans Bu/A	Wheat Bu/A	Crop productivity index for optimum management
**134C2	Camden silt loam, 5 to 10 percent slopes, eroded	7.4	30.7%		**154	**47	**60	**111
**134B	Camden silt loam, 2 to 5 percent slopes	5.1	20.9%		**164	**50	**63	**118
**199B	Plano silt loam, 2 to 5 percent slopes	4.1	16.7%		**192	**59	**73	**141
199A	Plano silt loam, 0 to 2 percent slopes	3.6	14.7%		194	60	74	142
**175B	Lamont fine sandy loam, 2 to 5 percent slopes	3.1	12.6%		**130	**44	**53	**97
**618F	Senachwine silt loam, 18 to 35 percent slopes	1.1	4.3%		**104	**33	**41	**76
Weighted Average					163	50.5	63.1	118.6

Table: Optimum Crop Productivity Ratings for Illinois Soil by K.R. Olson and J.M. Lang, Office of Research, ACES, University of Illinois at Champaign-Urbana. Version: 1/15/2011 Amended Table S2 B811 (Updated 3/1/2011)

Crop yields and productivity indices for optimum management (B811) are maintained at the following NRES web site: <http://soilproductivity.nres.illinois.edu/>

** Indexes adjusted for slope and erosion according to Bulletin 811 Table S3