

The Natural Resources Group, Inc.

112 S. Main Street Suite 201 • Tuscumbia, Alabama 35674
(256) 383-8990 Phone • (256) 383-2990 Fax

www.NaturalRG.com

PROPERTY SPECIFICS

Property No.: TST01

Mt. Gilead

Tishomingo County, MS

\$ 1,500 Per Acre*

Price: \$ 52,665.00

35.11 Acres*

The Natural Resources Group, Inc. is representing the Seller as the Seller's Agent **

Cover Type: Mature timber

Present Use: Timberland/Residential

Access: CR 177

Property Rights: Fee Simple

Topography: Flat to Gently Rolling

Zoning: none

Description:

35 acres with a building site, gently rolling topography, some open fields but mostly mature timber. This property is just a few miles from Highway 72, and Iuka, Mississippi. Once a rural farm that raised cows, crops and kids, the property has gently reverted to a place ideally situated for recreation and relaxation. It's 35 acres are ample enough to provide privacy, and yet offered at a very affordable price. It can easily become a beautiful homeplace. close to town, schools and amenities, but without having to leave nature.

Come see why we are excited about this property.

Driving Directions:

From the intersection of Highways 72 and 25, in Iuka, Mississippi, travel west on Highway 72 3.6 miles to County Road 169. Turn left (south) on CR 169 and travel 2.8 miles to CR 177. Turn left (south) on CR 177 and travel 1.3 miles to the northeast corner of the property (and our Natural Resources Group For Sale sign).

Please note:

* Properties are sold as a total sum, and not on a per acre basis. Acreage estimates are deemed accurate but neither the owner nor their agents warrant acreage amounts.

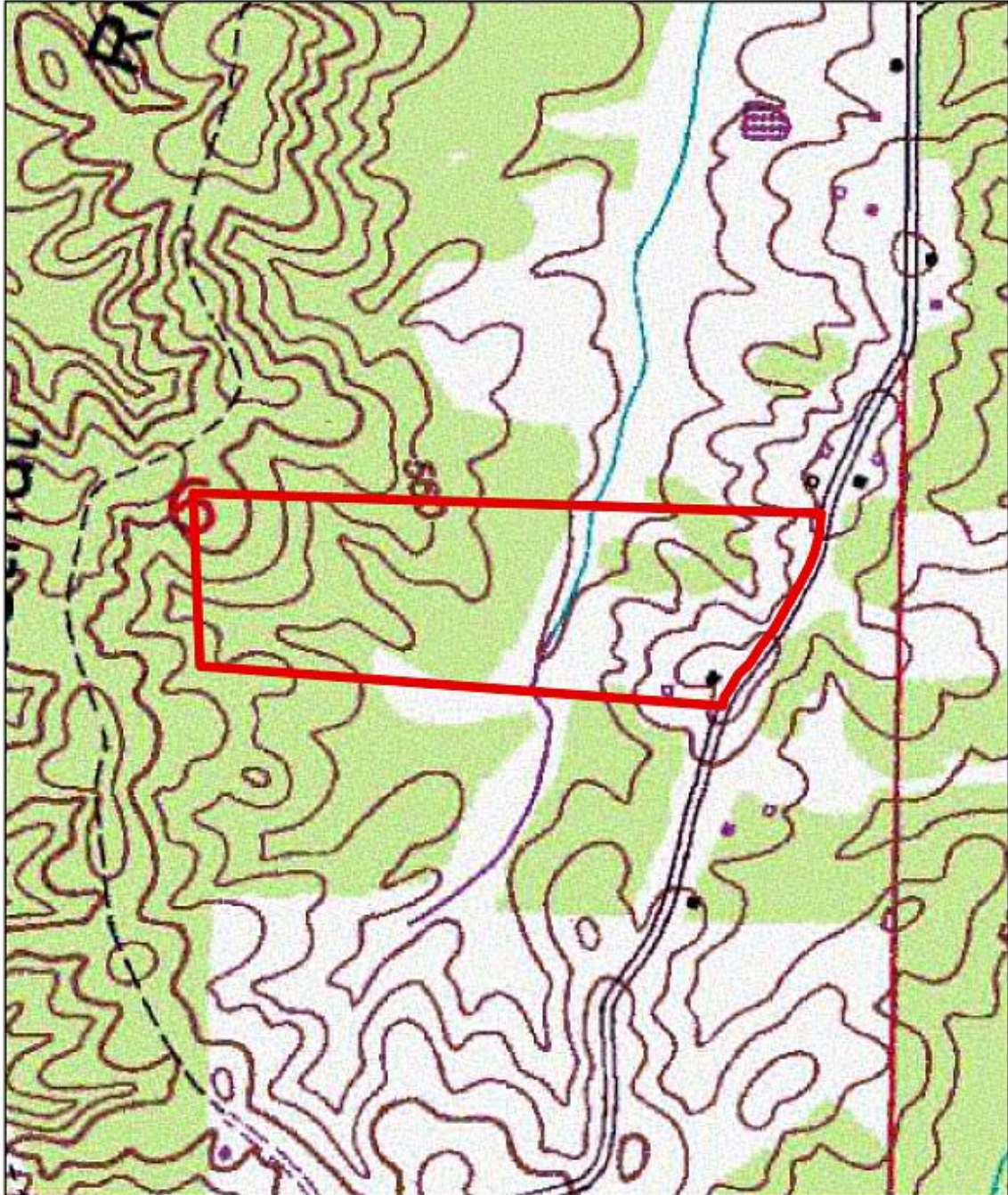
** Please see our agency disclosure statement for information about our representation regarding this and all other properties.

NRG, INC.

The Natural Resources Group, Inc.

112 S. Main Street Suite 201 • Tuscumbia, Alabama 35674
(256) 383-8990 Phone • (256) 383-2990 Fax

www.NaturalRG.com



Property No. TST01

Topographic Map

This map is furnished for the convenience of the Buyer. Neither the Owner or the Broker warrants its accuracy, or its depiction of land use, boundary location, acreage, easements or the lack thereof, or timber type.

Natural Resources Group, Inc.
256-383-8990 www.NaturalRG.com



0 250 500 1,000 Feet

The Natural Resources Group, Inc.

112 S. Main Street Suite 201 • Tuscumbia, Alabama 35674
(256) 383-8990 Phone • (256) 383-2990 Fax

www.NaturalRG.com



Property No. TST01 **Aerial Photograph**

The date of this photography is unknown.
Neither the Owner or the Broker warrants its accuracy,
or its depiction of land use, boundary location, acreage,
easements or the lack thereof, or timber type.

Natural Resources Group, Inc.
256-383-8990 www.NaturalRG.com

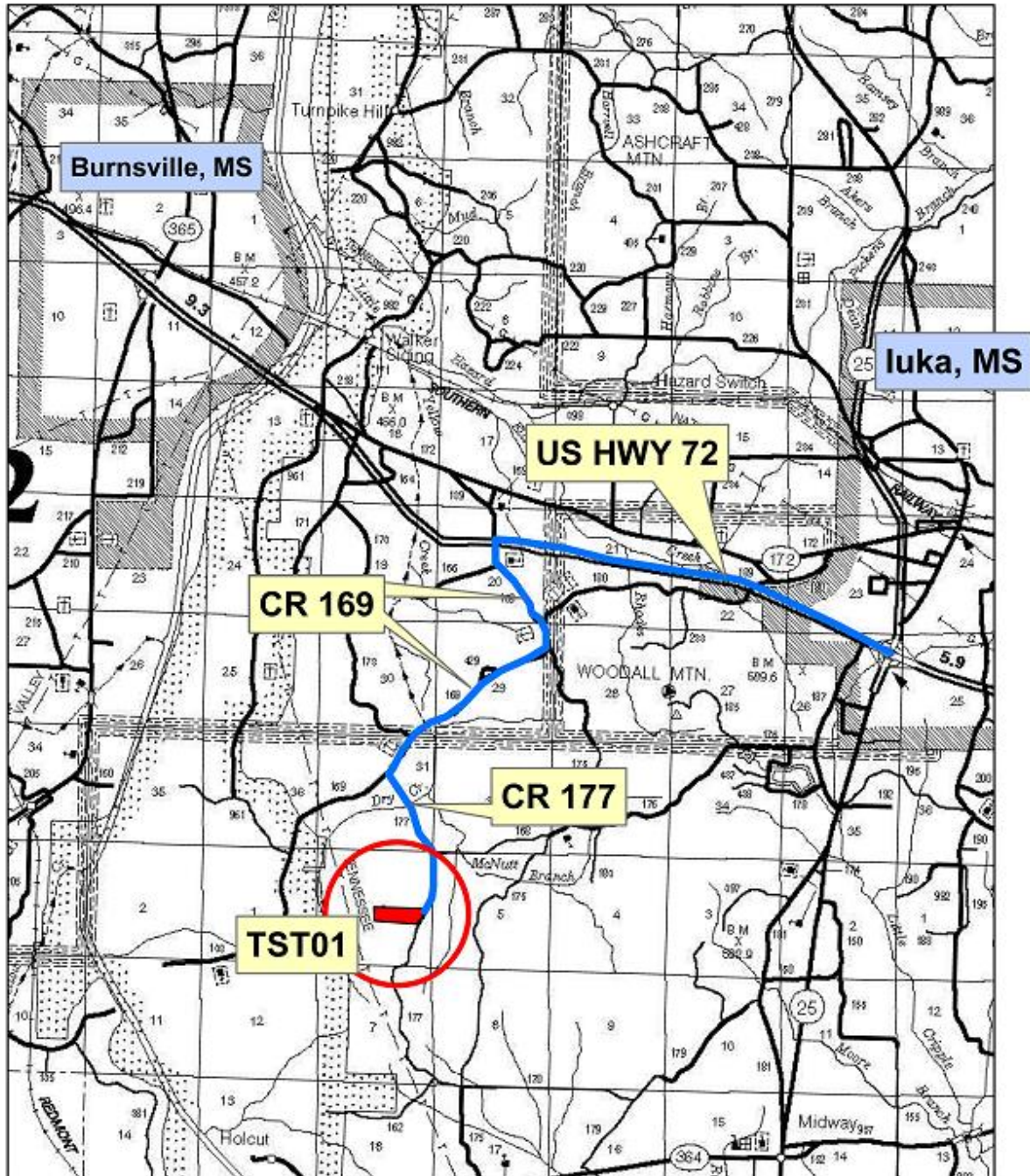


0 250 500 1,000
Feet

The Natural Resources Group, Inc.

112 S. Main Street Suite 201 • Tusculumbia, Alabama 35674
(256) 383-8990 Phone • (256) 383-2990 Fax

www.NaturalRG.com



Property No. TST01

**Tishomingo County
Road Map**

Natural Resources Group, Inc.
256-383-8990 www.NaturalRG.com

0 0.5 1 2 Miles

The Natural Resources Group, Inc.

112 S. Main Street Suite 201 • Tuscumbia, Alabama 35674
(256) 383-8990 Phone • (256) 383-2990 Fax

www.NaturalRG.com

