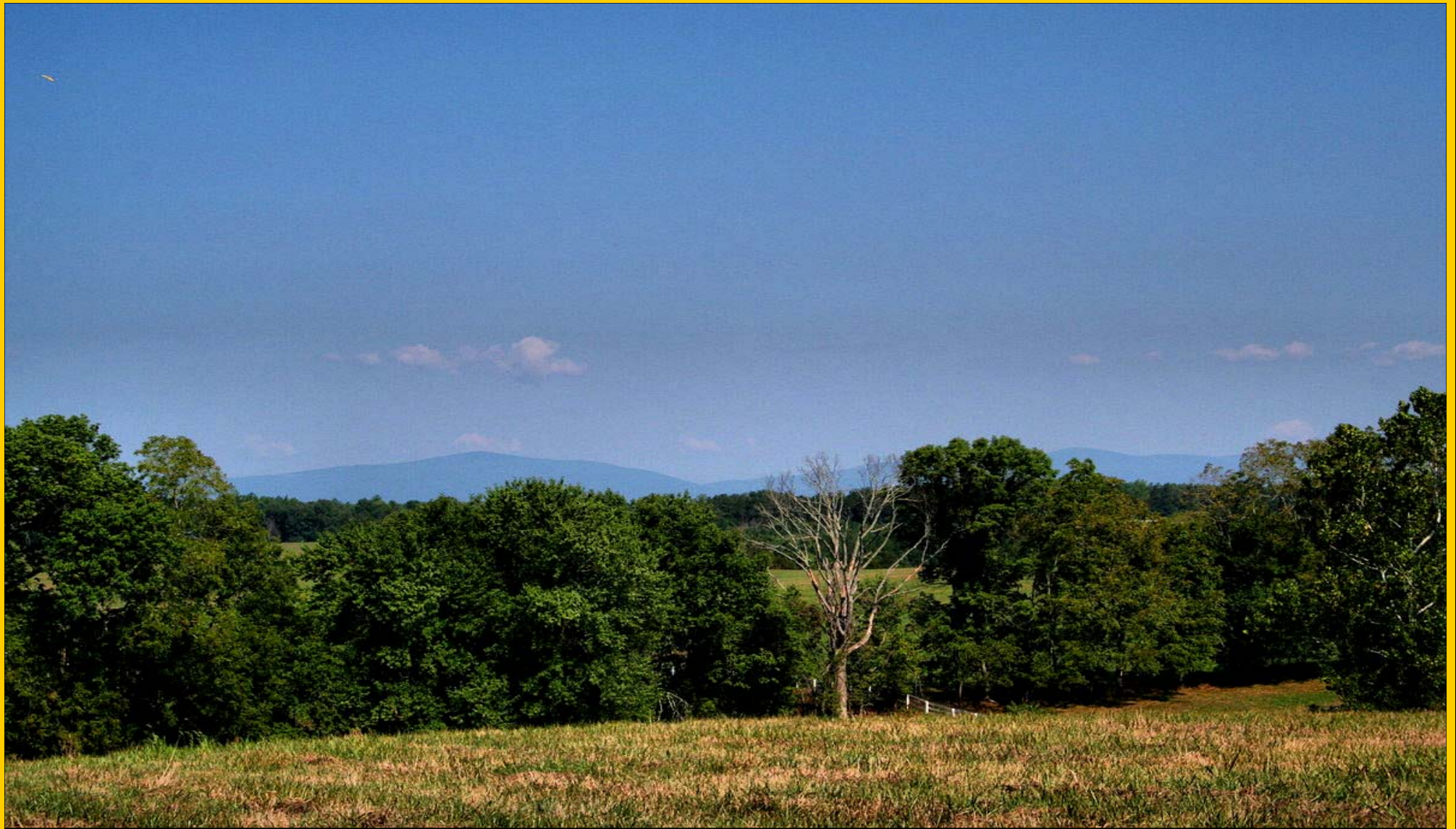
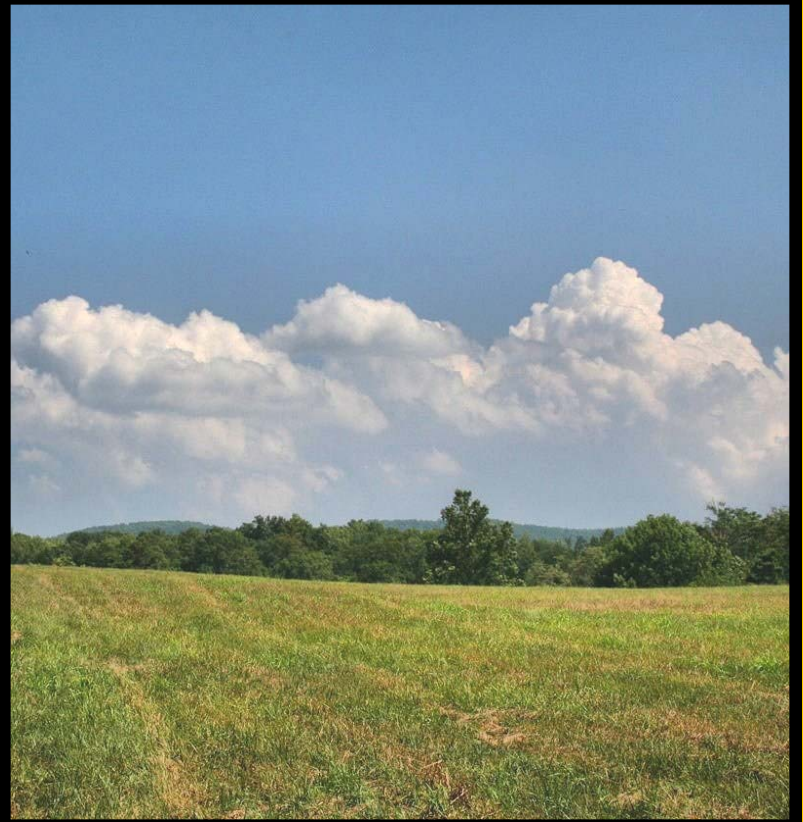




Stony Point Acres



Located in North Eastern Albemarle County lays 34 acres of the most beautiful land in the area with fantastic views of the Southwest Mountains looking east & the Blue Ridge looking west. The land consists of gently rolling meadows, a scenic pond, and a couple of acres of large hardwoods. Situated in an area of horse farms and with over 100 additional acres available for trail riding, this property is ideal for horses! Also, there are several wineries and vineyards nearby, and for the vineyard enthusiast, the land is suited for a premier vineyard. Conveniently located, within 20 minutes to Charlottesville and 15 minutes to the airport.









VIRGINIA ESTATES

VIRGINIA'S FINEST REAL ESTATE

877-419-2200

Kurt Vogelsang

434-409-0750