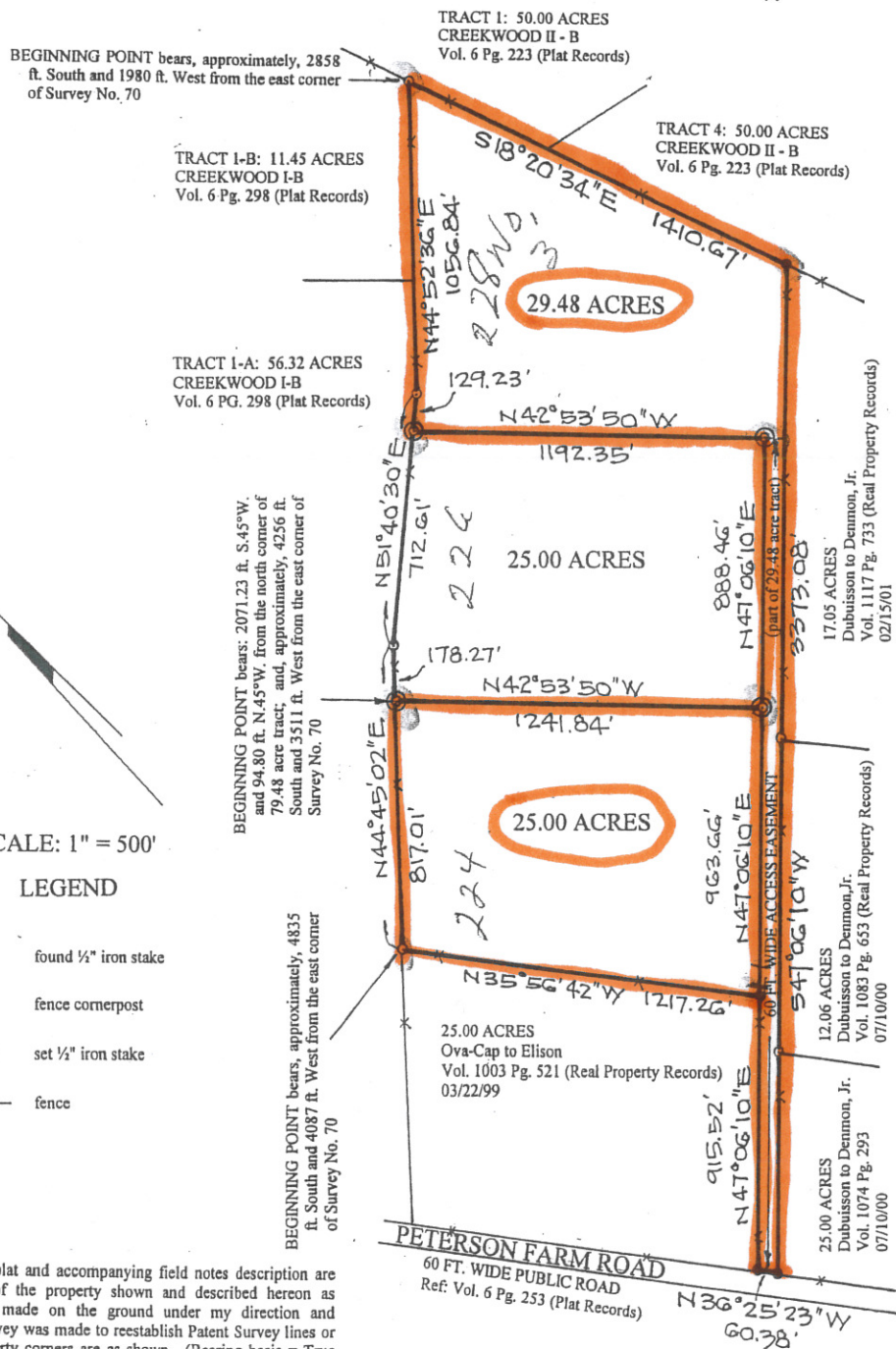


SURVEY PLAT FOR THREE TRACTS OF LAND - 25.00 ACRES, 25.00 ACRES, AND 29.48 ACRES - OUT OF W.T. CROOK SURVEY NO. 70, ABSTRACT NO. 113 IN KERR COUNTY, TEXAS; PARTS OF A CERTAIN 79.48 ACRE TRACT CONVEYED FROM JEFFREY B. ELISON, ET UX TO STEVE HOWARD AND MICHELLE HOWARD BY A WARRANTY DEED WITH VENDOR'S LIEN EXECUTED THE 10TH DAY OF AUGUST, 2007 AND RECORDED IN VOLUME 1623 AT PAGE 540 OF THE OFFICIAL PUBLIC RECORDS OF KERR COUNTY, TEXAS



I hereby certify that this plat and accompanying field notes description are accurate representations of the property shown and described hereon as determined by a survey made on the ground under my direction and supervision, except no survey was made to reestablish Patent Survey lines or corners; and that all property corners are as shown. (Bearing basis = True north based on GPS observations)

Date Surveyed: December 21, 2007

Dated this 16th day of July, 2008

Lee C. Voelkel
Registered Professional Land Surveyor No. 3909

