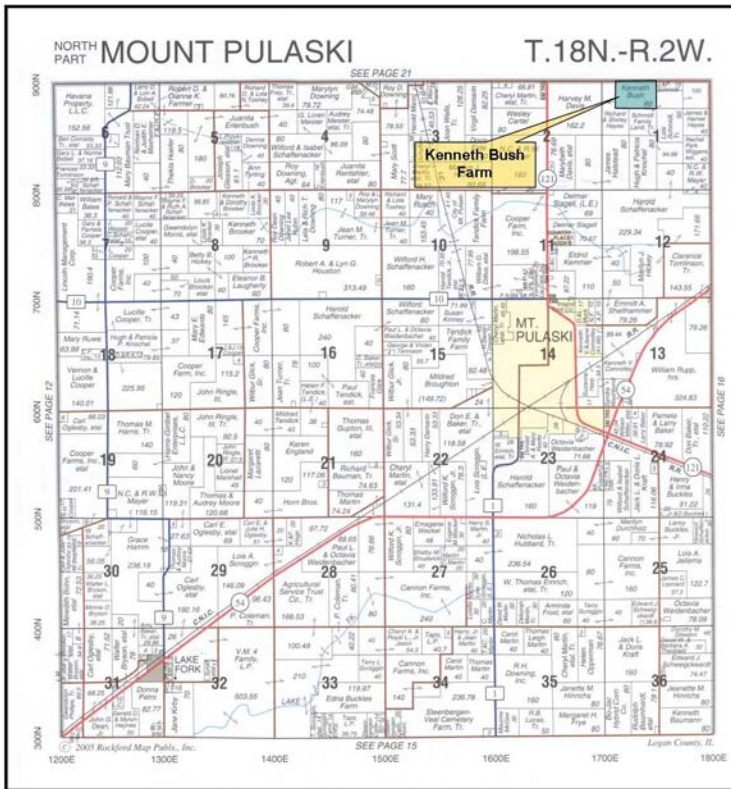


KENNETH BUSH FARM

60.6 Acres +/-
Logan County, Illinois



A DIVISION OF SOY CAPITAL BANK & TRUST COMPANY



Reprinted with permission of Rockford Map Publishers, Inc.

Located 2 1/2 miles northeast of Mt. Pulaski, Illinois on 900 North Road, 3/4 mile east of State Rt. 121 on south side.

Productive Cropland Soils:

- Consisting mainly of Tama Silt Loam, Ipava Silt Loam, and Pilot Silt Loam
- 56.7 FSA Cropland Acres
- Classified as Not HEL or containing any wetlands



Excellent 4-Year Yield History:

2010	Beans	64 Bu/Acre
2009	Corn	185 Bu/Acre
2008	Beans	56 Bu/Acre
2007	Corn	206 Bu/Acre

\$480,000 or \$7,920.79 Per Acre

Thomas L. Toohill, Broker ttoohill@soybank.com (217) 547-2885
Keith Waterman, Broker kwateman@soybank.com (217) 547-2884
 3151 Greenhead Dr., Suite A - Springfield, IL 62711

DISCLAIMER: The information provided is believed to be accurate and representative. It is subject to verification and no liability for error or omissions is assumed. There are no warranties, expressed or implied, as to the information herein contained, and it is recommended that all buyers make an independent inspection of the property. Plat Map reprinted with permission of Rockford Map Publishers, Inc. Thomas Toohill, designated agent with Soy Capital, represents the Seller in this transaction.

www.soycapitalag.com