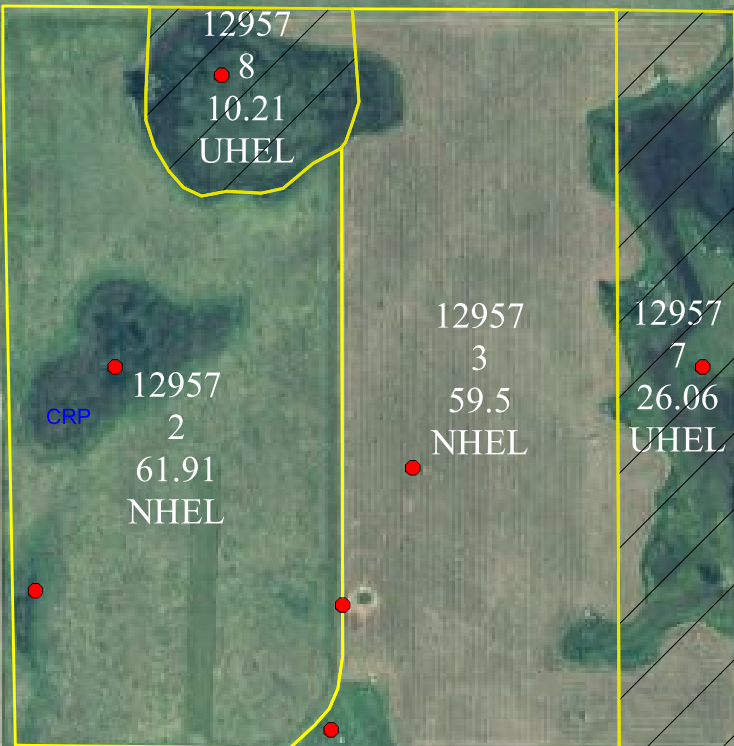


S-T-R: 21-128N-65W

S-T-R: 28-128N-65W

S-T-R: 33-128N-65W



United States Department of Agriculture  
Farm Service Agency

**Edmunds County**

PLSS: 28\_128N\_65W

Farm: 6353



April 20, 2011

**Wetland Determination Identifiers**

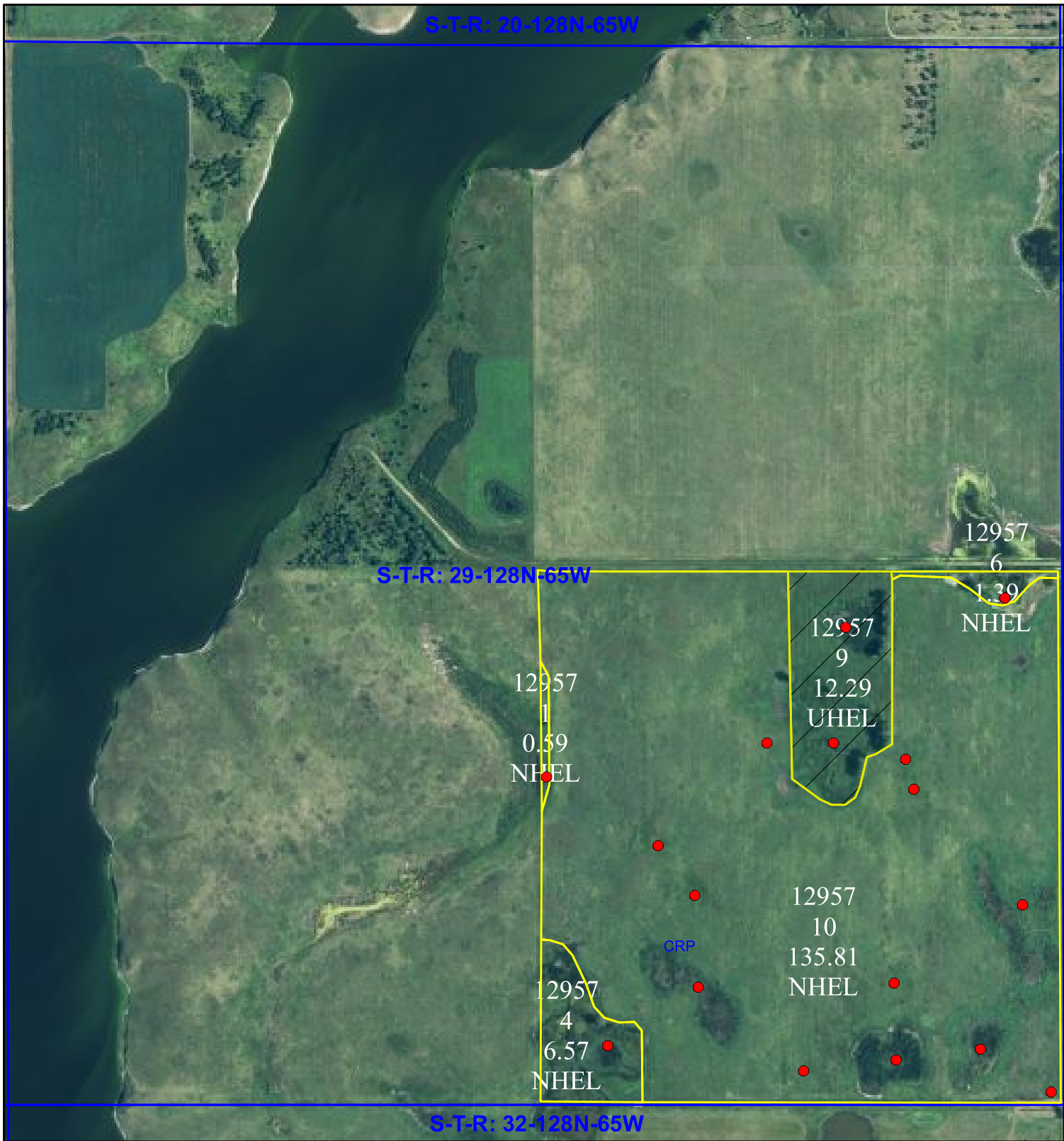
- Restricted Use
- ▼ Limited Restrictions
- Exempt from Conservation Compliance Provisions

Common Land Units

Disclaimer: Wetland identifiers do not represent the size, shape or specific determination of the area.  
Refer to your original determination (CPA-026 and attached maps) for exact wetland boundaries and determinations, or contact NRCS.

2010 Ortho-Photography - Not to Scale

1:8,217



United States Department of Agriculture  
Farm Service Agency

## Edmunds County

PLSS: 29\_128N\_65W

Farm: 6353

April 20, 2011



### Wetland Determination Identifiers

- Restricted Use
- ▼ Limited Restrictions
- Exempt from Conservation Compliance Provisions

Common Land Units

Disclaimer: Wetland identifiers do not represent the size, shape or specific determination of the area.  
Refer to your original dermination (CPA-026 and attached maps) for exact wetland boundaries and determinations, or contact NRCS.

2010 Ortho-Photography - Not to Scale

1:8,122