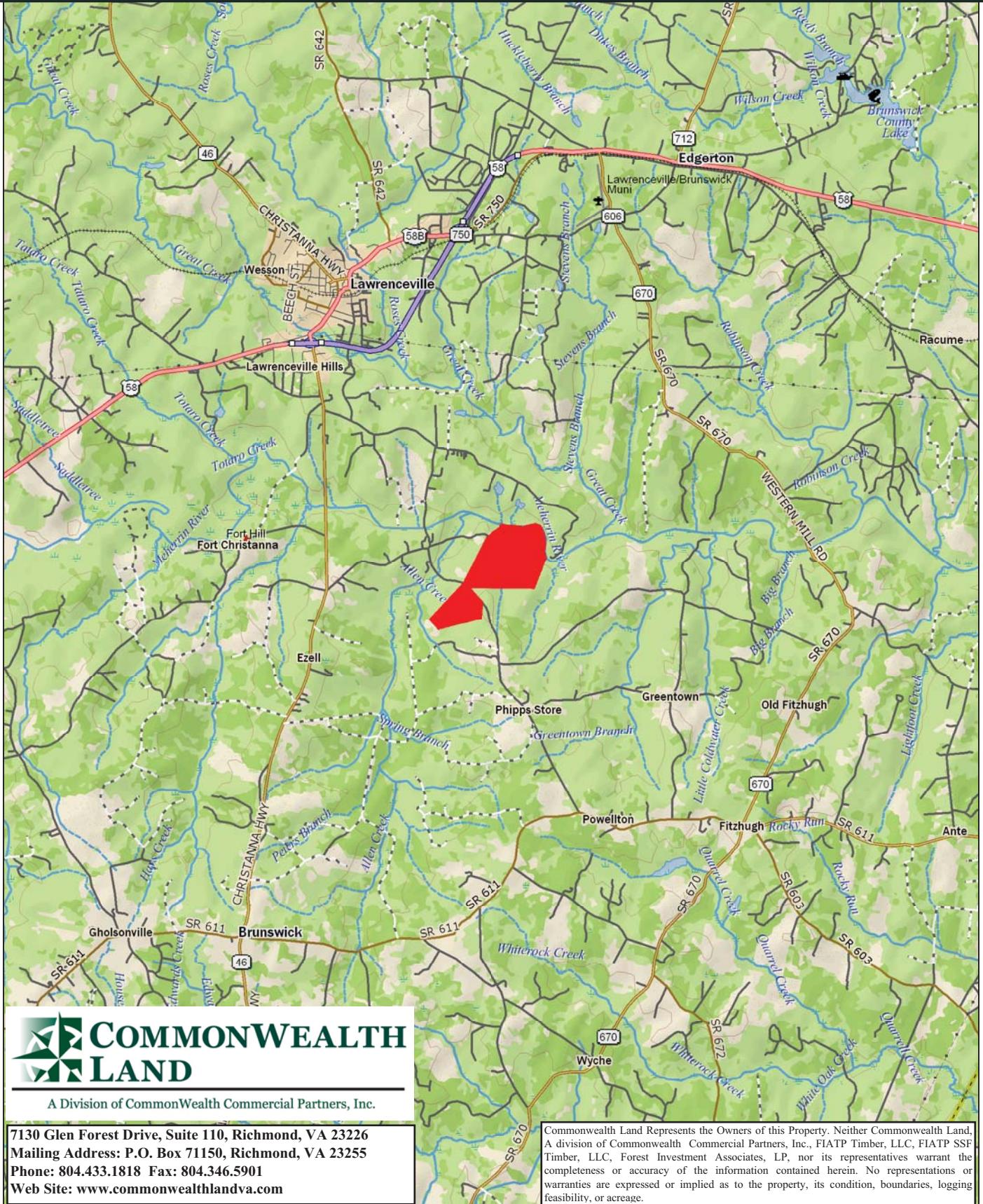


Timberland Investment Opportunity

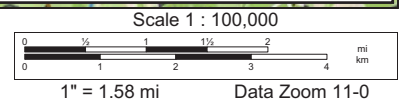
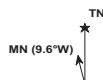
Brunswick Plantation - 460+/- Acres - Brunswick County, VA



Data use subject to license.

© DeLorme. XMap® 7.

www.delorme.com



Tract Summary Data

Brunswick Plantation - 460+/- Acres - Brunswick County, VA

***Excellent Long-Term Timberland Investment Opportunity With Frontage on the Meherrin River Offering Strong Recreational Potential**

***Located Approximately 3.7 Miles South of the Town of Lawrenceville with Approximately 1,610' of Frontage along VSR673 (Reavis Gin Rd.)**

***Fairly Level Site with Ample Interior Road System**

***Timber Comprised of 84+/-Acres of Loblolly Pine Established in 1994, 123+/-Acres of Loblolly Pine Established in 2005 with the Remaining Balance in Mixed Hardwood**

***Currently Zoned A-1 (Agricultural) and Identified as Tax Map Parcel #63-19B**

***N36-42.417' W77-49.321'**

*** 4,450' of Frontage on the Meherrin River with Excellent Wildlife Habitat and Strong Populations of Deer & Turkeys**

***Directions - Take I-85 South to Exit #28 (Alberta), then South on US1 for 1.6 Miles, then Left on VSR46 (Christanna Hwy.) and Travel Approximately 8.5 Miles Through Lawrenceville, Then Left VSR715 (Iron Bridge Rd.) and Travel Approximately 3.35 Miles where the Property Begins on Both Sides of the Road**

***Contact Brokers For More Details**

***Offered For \$735,000**

Contact:

Hank Campbell

Office: 804.433.1818

Fax: 804.346.5901

Cell: 804.334.3136

hcampbell@commonwealthlandva.com

Bill Barnett

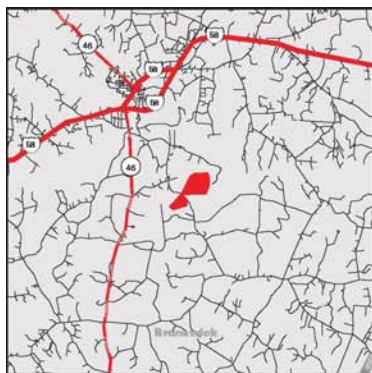
Office: 804.433.1821

Fax: 804.346.5901

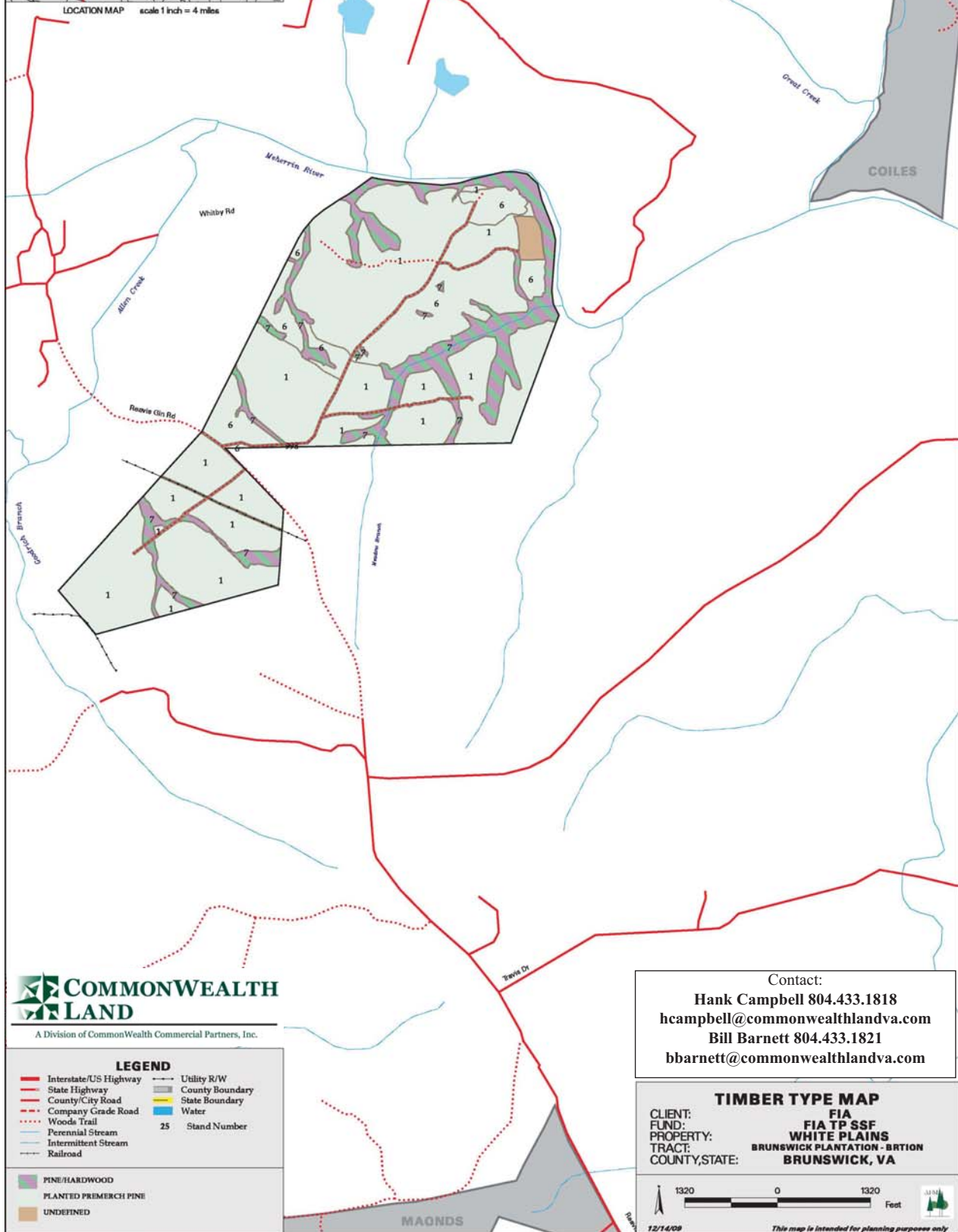
Cell: 804.339.1100

bbarnett@commonwealthlandva.com

Property Information is Available at *Commonwealthlandva.com, LandsofAmerica.com and Costar.net*



COMP-STAND	DESCRIPTION	YEAR	ACRES
636-1	LBURP1YP	1998	296.18
636-6	LBURP1YP	2003	77.05
636-7	PHBBN5NP	1946	73.96
636-998	UDNAO4NP	0	12.6
TOTAL = 460			



COMMONWEALTH LAND
A Division of Commonwealth Commercial Partners, Inc.

Contact:
Hank Campbell 804.433.1818
hcampbell@commonwealthlandva.com
Bill Barnett 804.433.1821
bbarnett@commonwealthlandva.com

TIMBER TYPE MAP
FIA
FIA TP SSF
PROPERTY: WHITE PLAINS
TRACT: BRUNSWICK PLANTATION - BRITON
COUNTY, STATE: BRUNSWICK, VA

CLIENT: FIA
FUND: FIA TP SSF
PROPERTY: WHITE PLAINS
TRACT: BRUNSWICK PLANTATION - BRITON
COUNTY, STATE: BRUNSWICK, VA

12/14/09

This map is intended for planning purposes only



Condition Summary Report

Parameters:

Client: FIA TP SSF

Tract: BRUNSWICK PLANTATION (14536360)

MU: WHITE PLAINS

Compartment: Not Specified

Convertability Acreage Summary of Timbered Pine Stands Acreage and Volume (Tons) By Convertability Class

Convertability	Acres	%	PINE Pulp	PINE CNS	PINE Saw	HW Pulp	HW Saw	CYP Pulp	CYP Saw
Convertible	373.24	81.2	0.00	0.00	0.00	0.00	0.00	0.00	0.00
Non-Convertible	86.56	18.8	474.59	85.02	937.07	2,997.23	674.93	0.00	0.00
	459.80		474.59	85.02	937.07	2,997.23	674.93	0.00	0.00

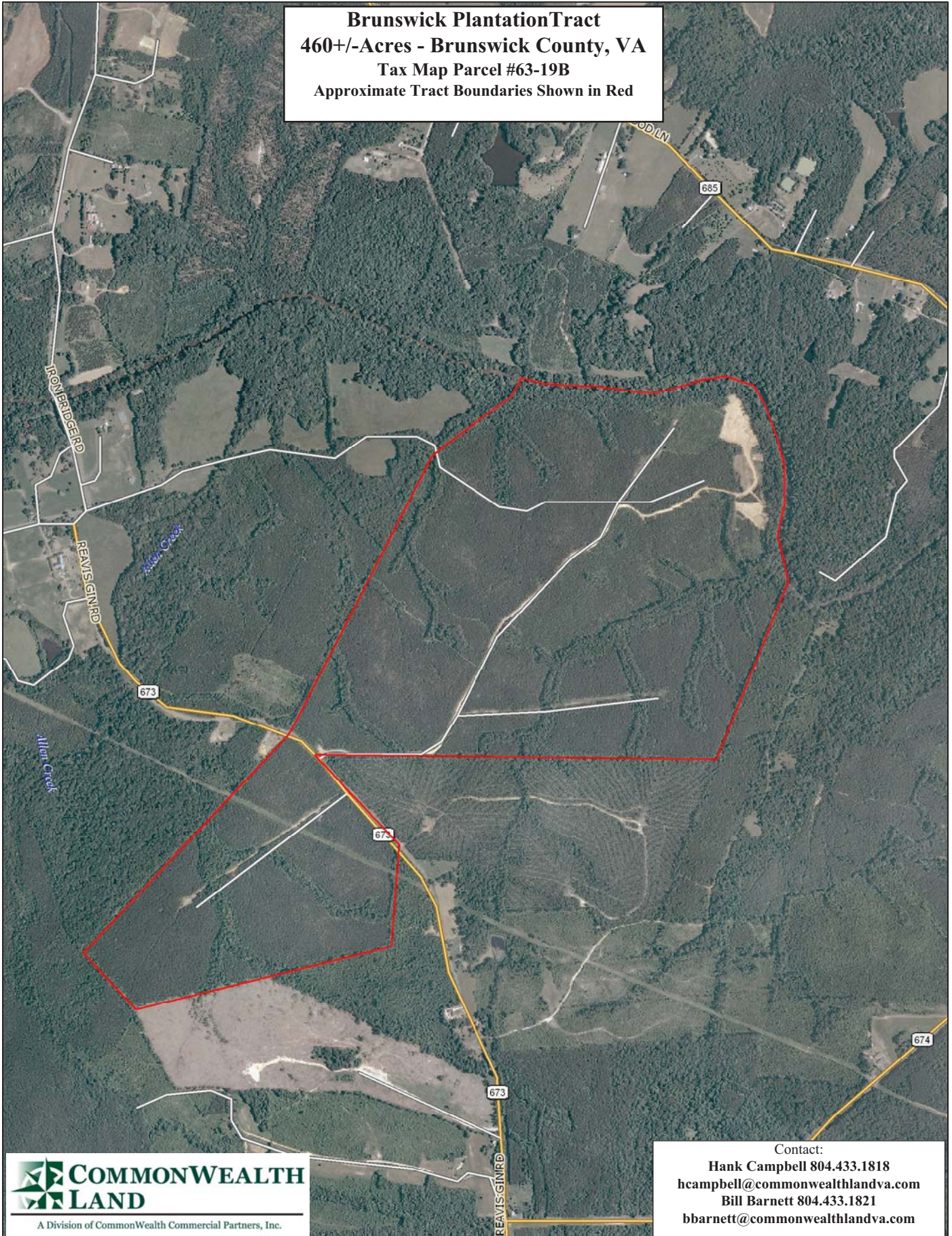
Pre-Merchantable Acreage Summary of Timbered Pine Stands Acres By Established Year and Establishment Type

Year Established	Stand Age	Planted Acres	Natural Acres	Total Acres
2003	7	77.05	0.00	77.05
1998	12	296.18	0.00	296.18
Pre-Merchantable Total		373.24	0.00	373.24

Timber Type Summary - Acreage By Timber Type

Timber Type	Acres
Non-Forest	12.60
Pine Natural	73.96
Pine Planted	373.24
Total	459.80

Brunswick Plantation Tract
460+/- Acres - Brunswick County, VA
Tax Map Parcel #63-19B
Approximate Tract Boundaries Shown in Red

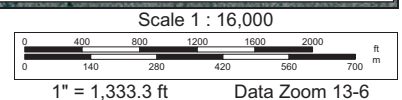
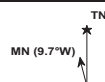


Contact:
Hank Campbell 804.433.1818
hcampbell@commonwealthlandva.com
Bill Barnett 804.433.1821
bbarnett@commonwealthlandva.com

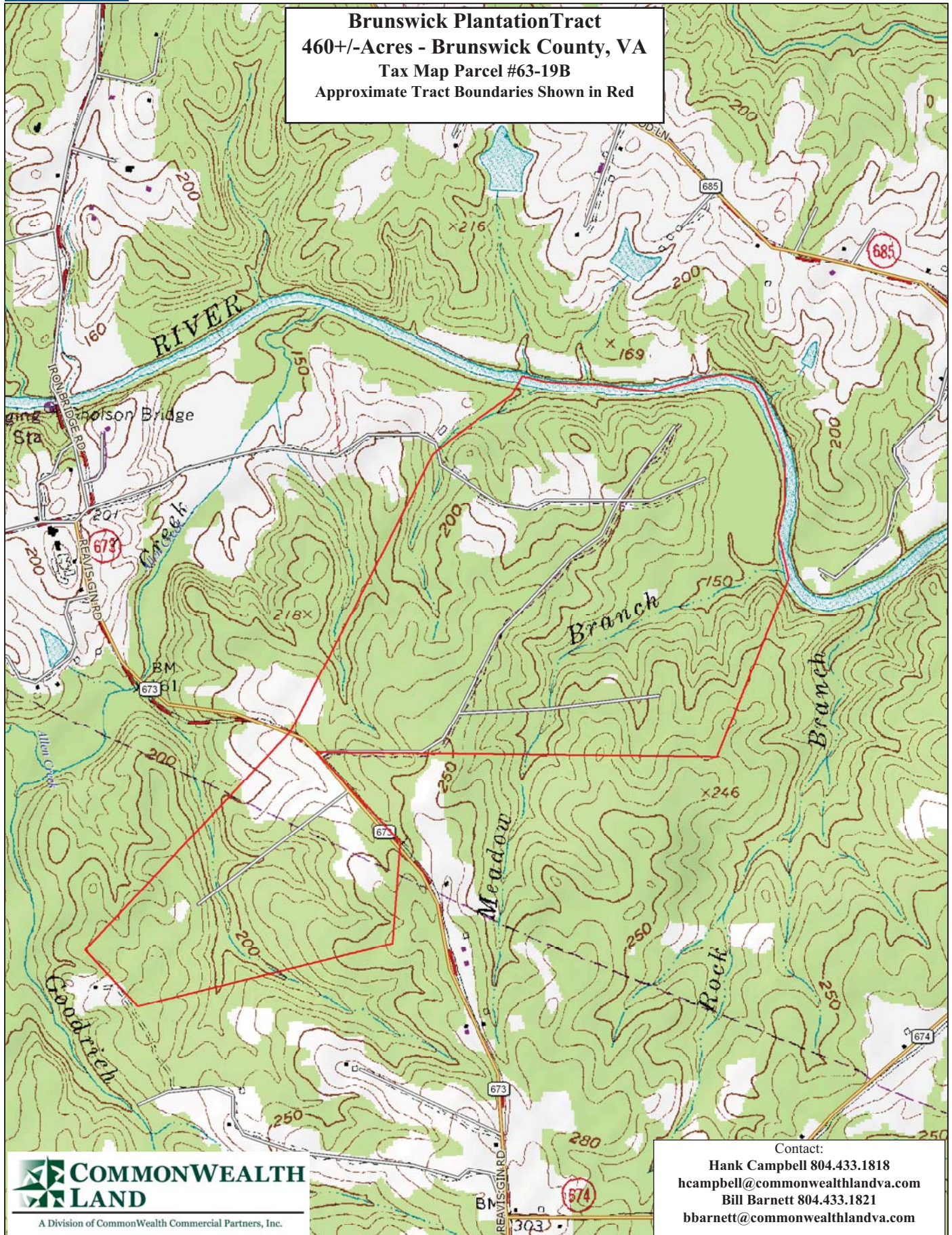
Data use subject to license.

© DeLorme. XMap® 7.

www.delorme.com



Brunswick Plantation Tract
460+/- Acres - Brunswick County, VA
Tax Map Parcel #63-19B
Approximate Tract Boundaries Shown in Red



Contact:
Hank Campbell 804.433.1818
hcampbell@commonwealthlandva.com
Bill Barnett 804.433.1821
bbarnett@commonwealthlandva.com

Data use subject to license.

© DeLorme. XMap® 7.

www.delorme.com

