

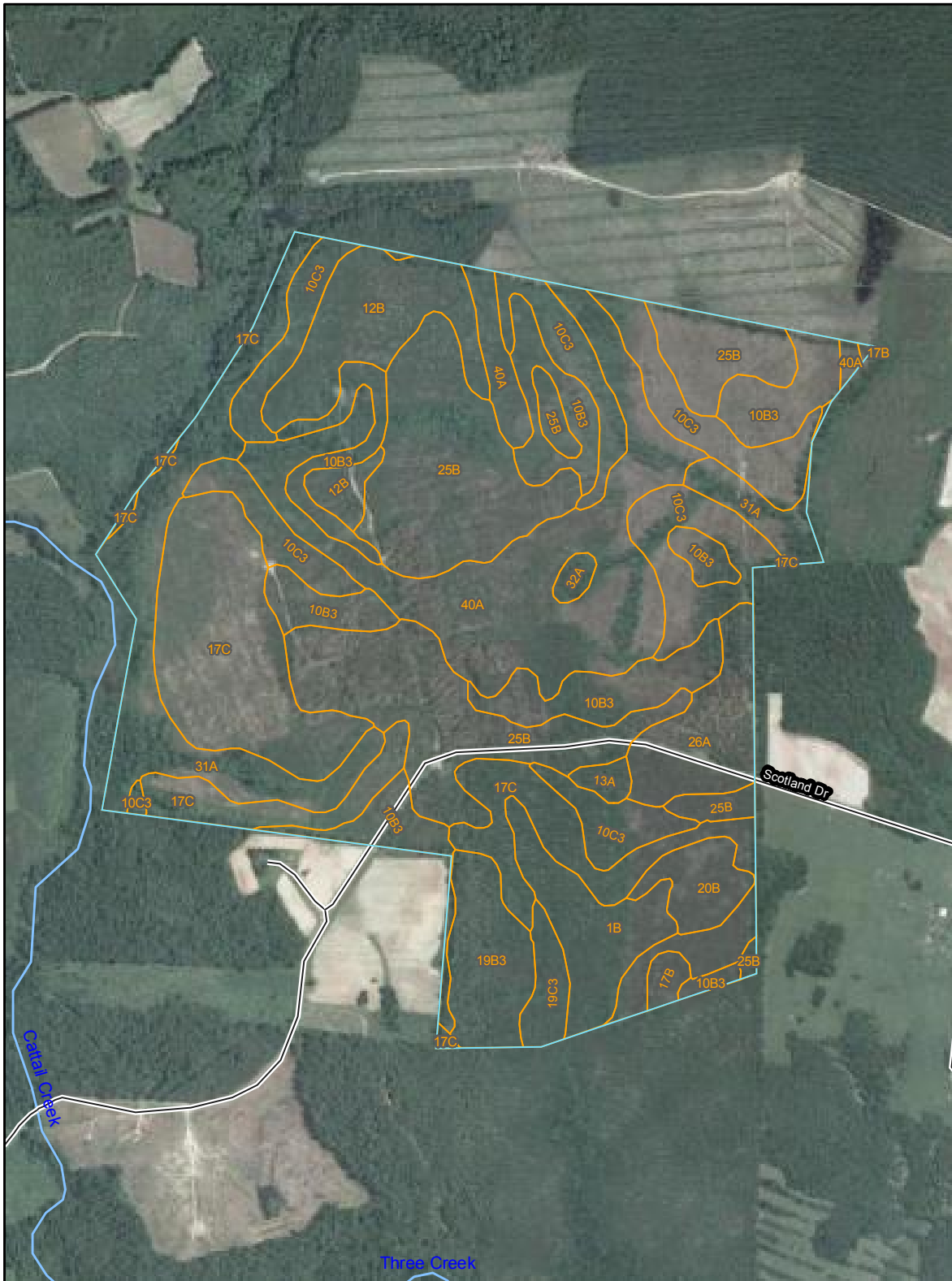
Soil Map—Greensville County, Virginia

77° 34' 42"

77° 33' 23"

36° 49' 4"

36° 49' 5"



36° 47' 38"

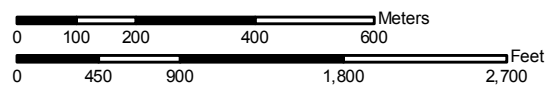
36° 47' 39"

77° 34' 39"

77° 33' 20"



Map Scale: 1:12,600 if printed on A size (8.5" x 11") sheet.



MAP LEGEND

Area of Interest (AOI)

 Area of Interest (AOI)

Soils

 Soil Map Units

Special Point Features

-  Blowout
-  Borrow Pit
-  Clay Spot
-  Closed Depression
-  Gravel Pit
-  Gravelly Spot
-  Landfill
-  Lava Flow
-  Marsh or swamp
-  Mine or Quarry
-  Miscellaneous Water
-  Perennial Water
-  Rock Outcrop
-  Saline Spot
-  Sandy Spot
-  Severely Eroded Spot
-  Sinkhole
-  Slide or Slip
-  Sodic Spot
-  Spoil Area
-  Stony Spot



Very Stony Spot



Wet Spot



Other

Special Line Features



Gully



Short Steep Slope



Other

Political Features



Cities

Water Features



Oceans



Streams and Canals

Transportation



Rails



Interstate Highways



US Routes



Major Roads



Local Roads

MAP INFORMATION

Map Scale: 1:12,600 if printed on A size (8.5" × 11") sheet.

The soil surveys that comprise your AOI were mapped at 1:15,840.

Please rely on the bar scale on each map sheet for accurate map measurements.

Source of Map: Natural Resources Conservation Service

Web Soil Survey URL: <http://websoilsurvey.nrcs.usda.gov>

Coordinate System: UTM Zone 18N NAD83

This product is generated from the USDA-NRCS certified data as of the version date(s) listed below.

Soil Survey Area: Greensville County, Virginia

Survey Area Data: Version 8, Dec 22, 2008

Date(s) aerial images were photographed: 6/10/2003

The orthophoto or other base map on which the soil lines were compiled and digitized probably differs from the background imagery displayed on these maps. As a result, some minor shifting of map unit boundaries may be evident.

Map Unit Legend

Greensville County, Virginia (VA081)			
Map Unit Symbol	Map Unit Name	Acres in AOI	Percent of AOI
1B	Abell loam, 2 to 7 percent slopes	15.0	3.5%
10B3	Craven clay loam, 2 to 6 percent slopes, severely eroded	50.9	11.8%
10C3	Craven clay loam, 6 to 12 percent slopes, severely eroded	53.8	12.4%
12B	Emporia loamy fine sand, 2 to 6 percent slopes	23.4	5.4%
13A	Faceville loamy sand, 0 to 2 percent slopes	1.9	0.4%
17B	Fluvanna-Mattaponi complex, 2 to 7 percent slopes	2.1	0.5%
17C	Fluvanna-Mattaponi complex, 7 to 15 percent slopes	66.9	15.5%
19B3	Georgeville clay loam, 2 to 7 percent slopes, severely eroded	14.0	3.2%
19C3	Georgeville clay loam, 7 to 15 percent slopes, severely eroded	4.8	1.1%
20B	Helena gravelly coarse sandy loam, 2 to 7 percent slopes	7.3	1.7%
25B	Mattaponi sandy loam, 2 to 6 percent slopes	79.8	18.4%
26A	Orangeburg loamy sand, 0 to 2 percent slopes	14.9	3.5%
31A	Roanoke loam, 0 to 2 percent slopes, frequently flooded	37.7	8.7%
32A	Roanoke silt loam, 0 to 2 percent slopes, ponded	1.5	0.4%
40A	Woodington fine sandy loam, 0 to 2 percent slopes	58.7	13.6%
Totals for Area of Interest		432.8	100.0%