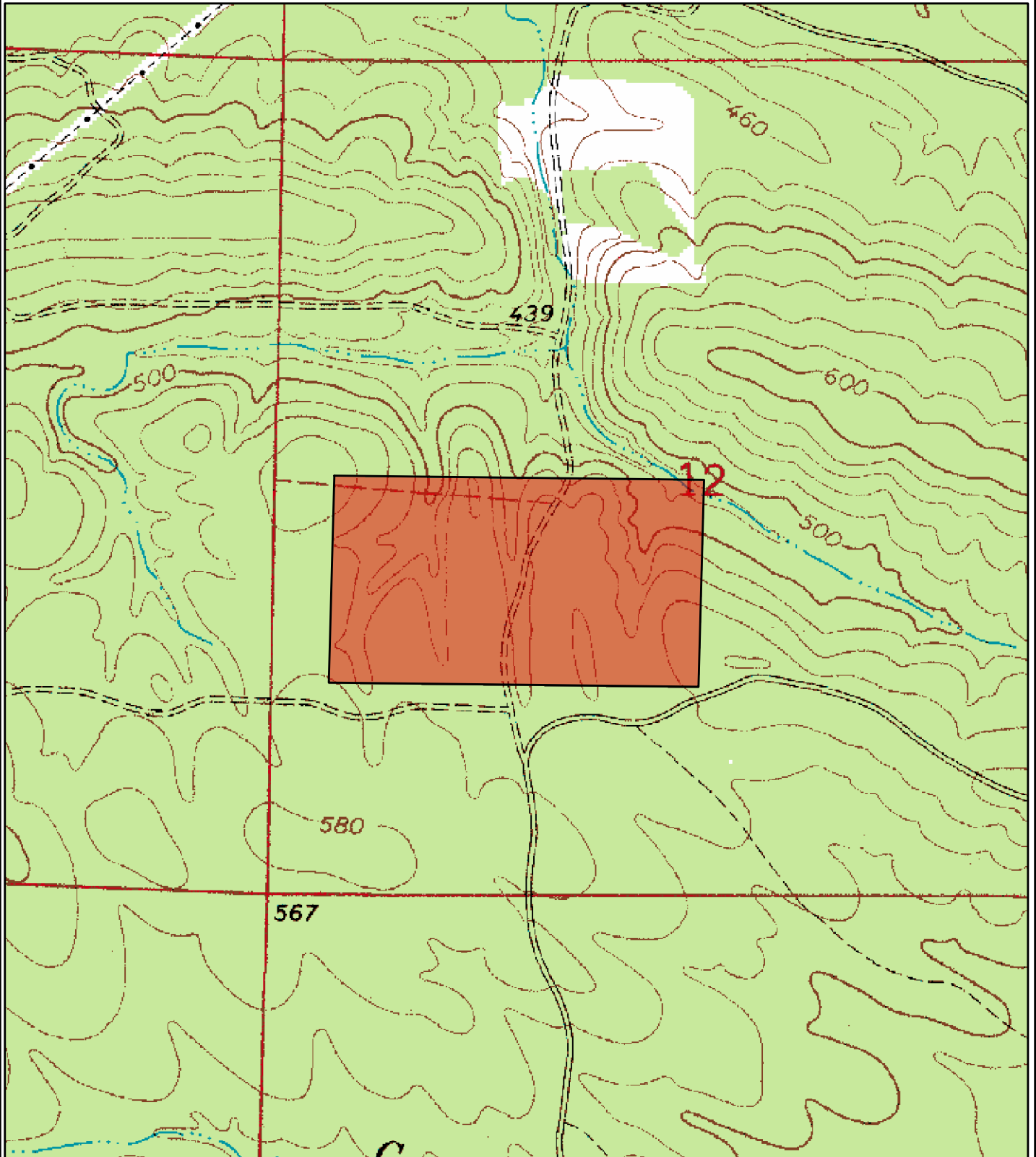


# NOTICE OF LAND SALE

Howard Tract - Listing #4265

N ½ of SW ¼ , less the western 330 feet (ten acres) of NW ¼ of SW ¼, Section 12,  
Township 7 South, Range 24 West, containing 70 acres, more or less, Pike County, Arkansas.



0 0.125 0.25  
Miles



Created: June, 2011  
Drawn By: JDT