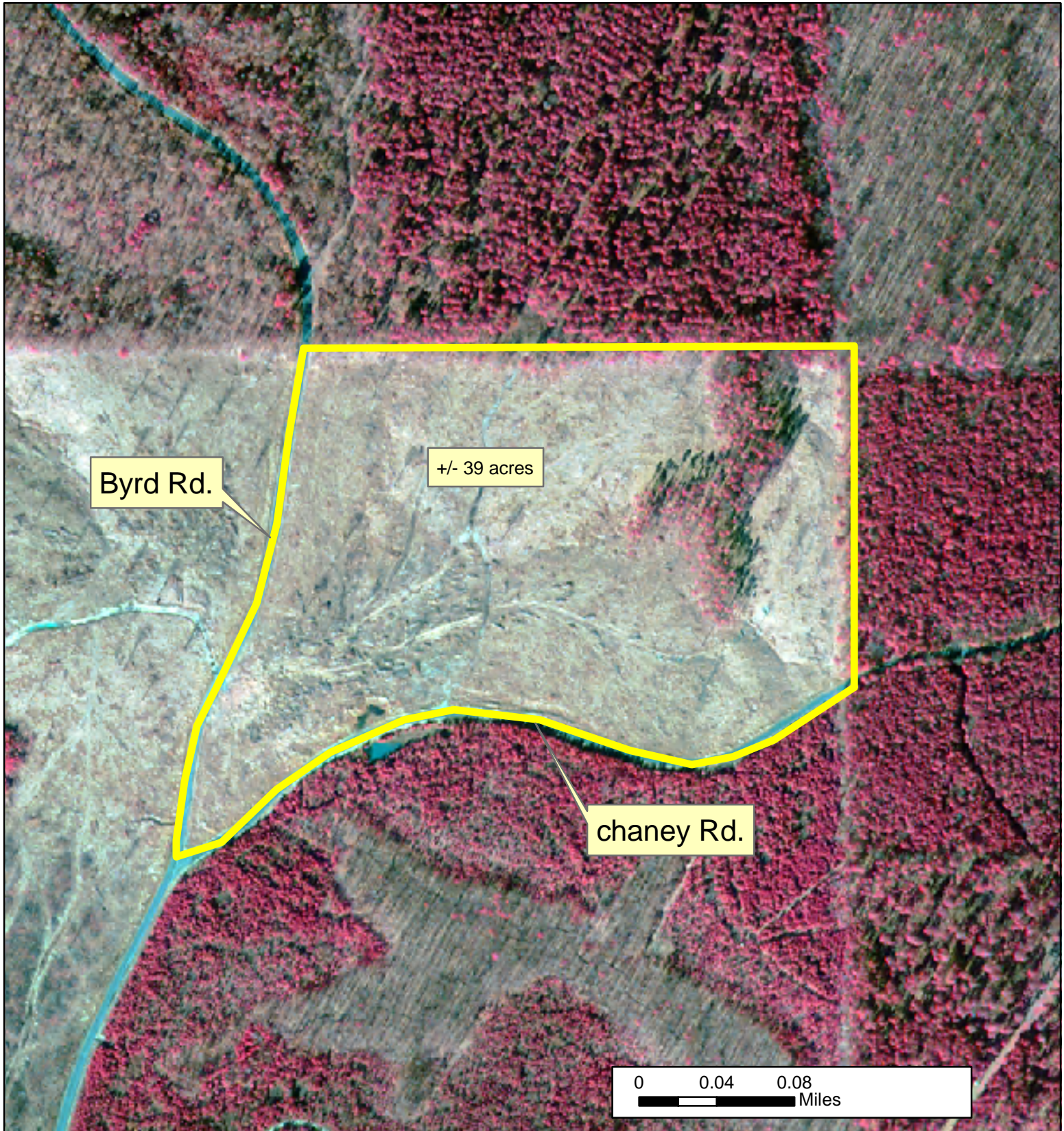


# J-19 North East Corner Tract +/- 39 Acres

All that part of NE 1/4 lying North of Chaney Rd. and East of Byrd Rd., as identified on the map below; Section 11, Township 3 South, Range 11 West, Jefferson County, Arkansas, 39 acres, more or less.



Phone: 1-888-695-8733  
[www.forestryrealestate.com](http://www.forestryrealestate.com)

**DAVIS DUBOSE**  
FORESTRY & REAL ESTATE CONSULTANTS PLLC

This map and all information it contains is provided "AS IS," as a courtesy to potential buyers. Potential buyers should make their own determination regarding the accuracy of the information provided. Neither the seller, Davis DuBose Forestry & Real Estate Consultants PLLC (DDFREC), their subsidiaries, affiliates nor representatives warrant the accuracy, adequacy or completeness of any information contained herein regarding the property, its condition, boundaries, access, acreage, or timber stand information. DDFREC expressly disclaims liability for errors or omissions.