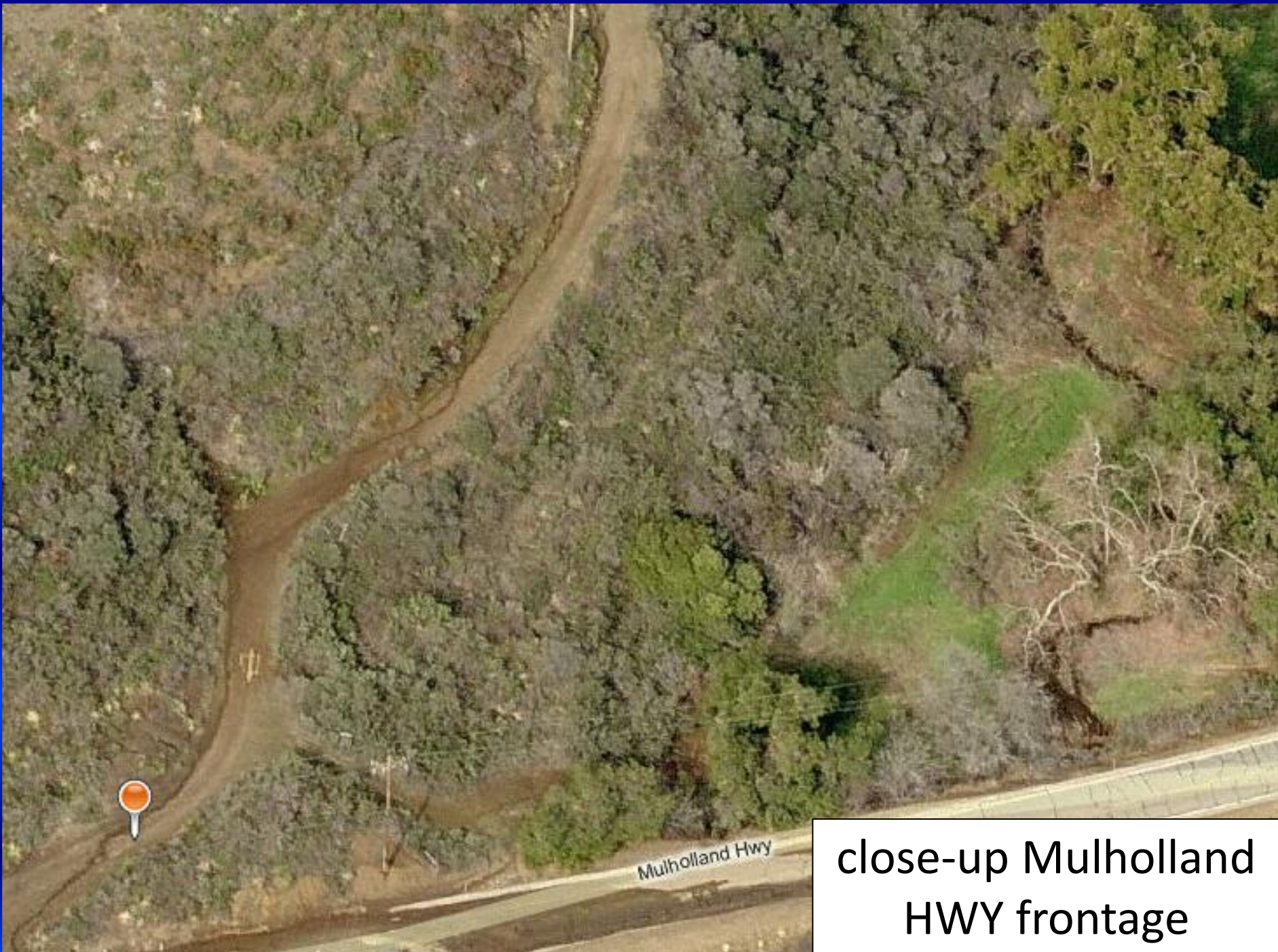


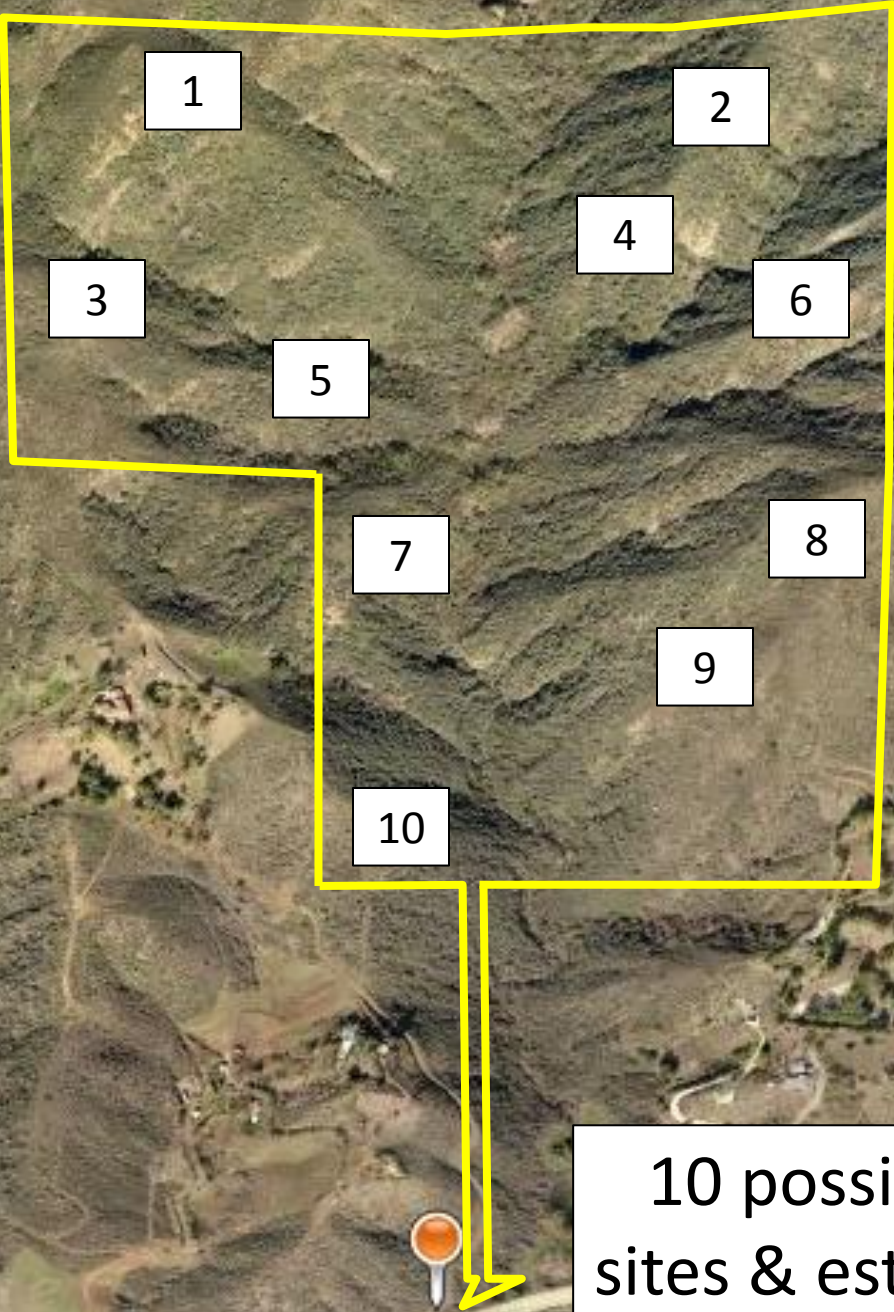
Satellite  
close-up



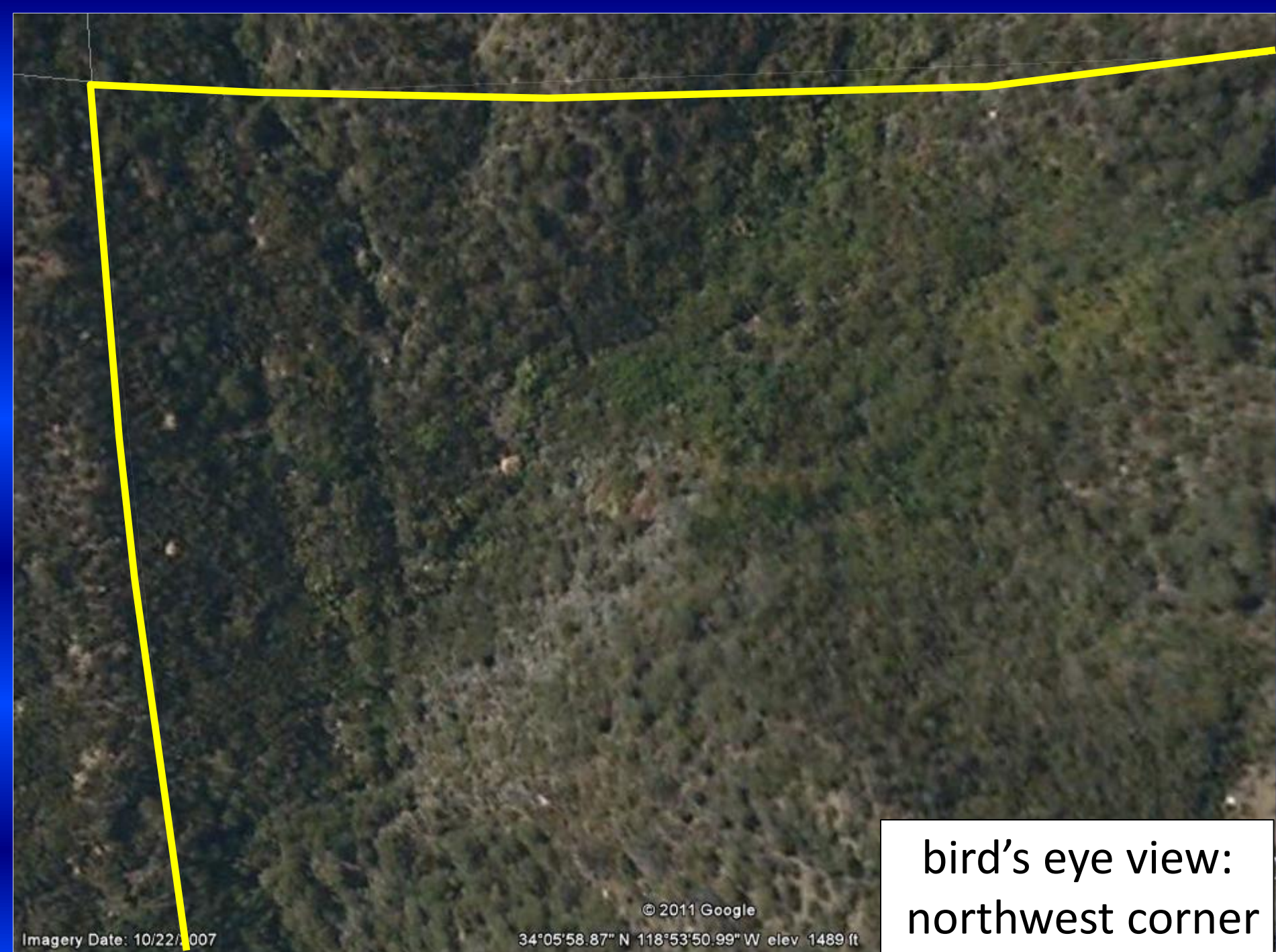
Mulholland Hwy

close-up Mulholland  
HWY frontage

#	Est. elevations
1	1,640
2	1,556
3	1,489
4	1,443
5	1,390
6	1,623
7	1,274
8	1,585
9	1,487
10	1,265



10 possible home sites & est. elevations



bird's eye view:  
northwest corner



bird's eye view:  
northwest line

© 2011 Google

Imagery Date: 10/22/2007

34°05'59.15" N 118°53'45.62" W elev 1635 ft



bird's eye view:  
north northwest line

© 2011 Google

34°05'59.23" N 118°53'41.35" W elev 1477 ft

10/22/2007



bird's eye view:  
north central line

© 2011 Google

34°05'58.86" N 118°53'33.22" W elev 1381 ft

: 10/22/2007

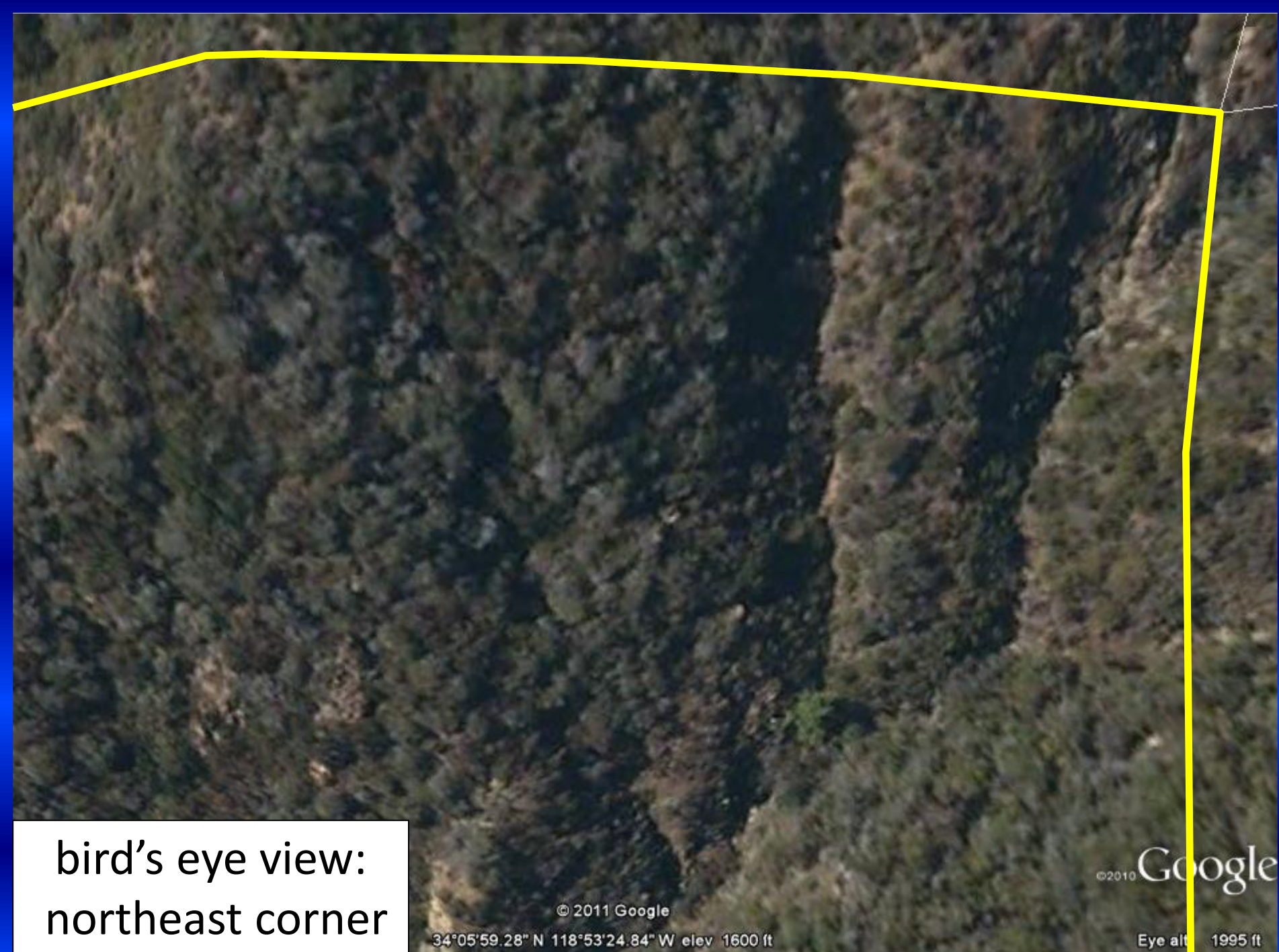


bird's eye view:  
northeast line

© 2011 Google

34°05'59.85" N 118°53'26.40" W elev 1644 ft

10/22/2007



bird's eye view:  
northeast corner

© 2011 Google

34°05'59.28" N 118°53'24.84" W elev 1600 ft

©2010 Google

Eye alt 1995 ft

An aerial photograph of a steep, forested mountain slope. The forest is dense and green, with some lighter-colored patches visible. A bright yellow line runs vertically along the right edge of the image. In the bottom left corner, there is a white box with black text. At the bottom center, there is a copyright notice and coordinates. At the bottom right, there is a copyright notice and the text 'Eye alt'.

bird's eye view:  
east northeast line

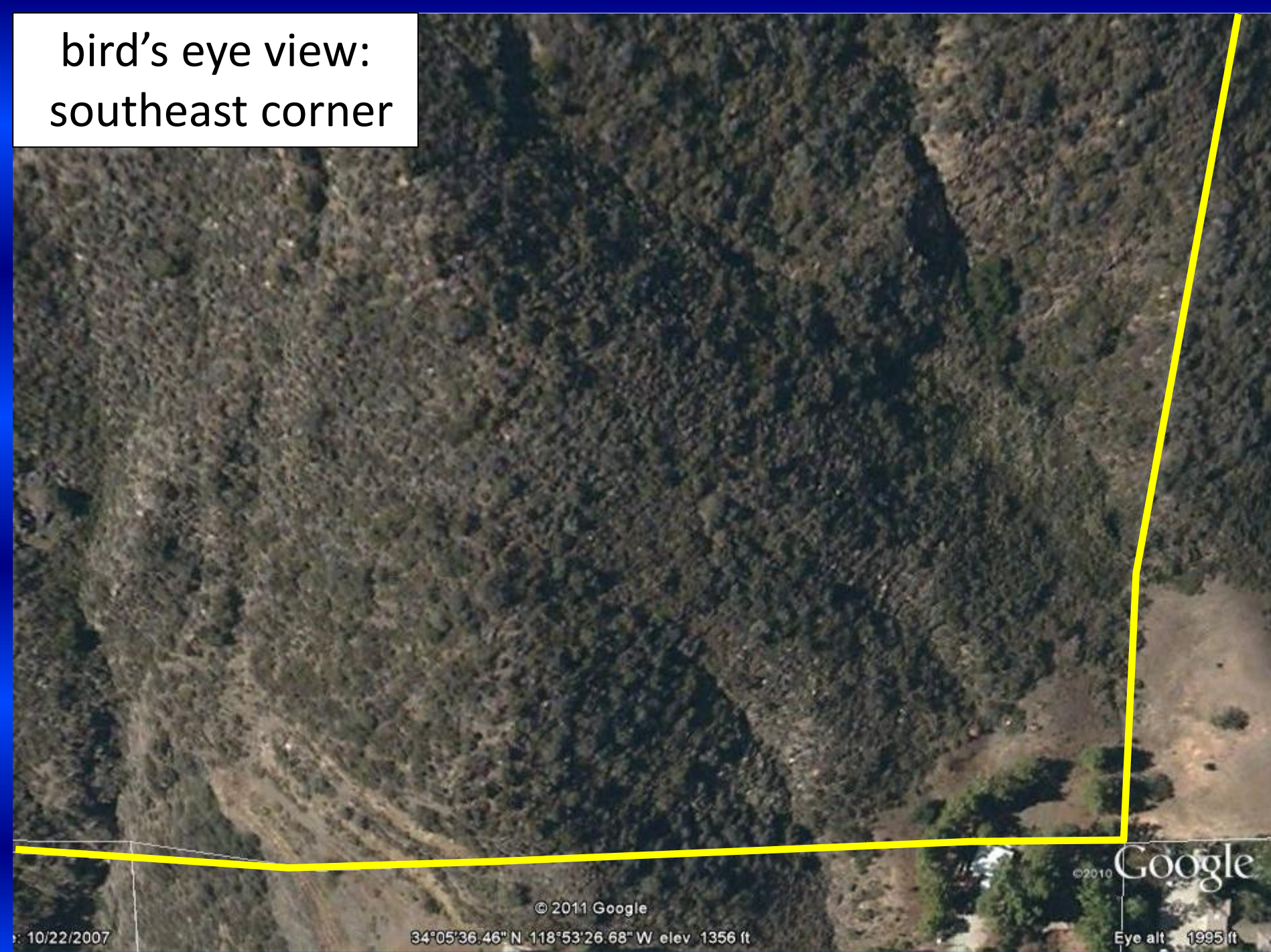
© 2011 Google

34°05'54.52" N 118°53'24.09" W elev 1507 ft

©2010 Google

Eye alt

bird's eye view:  
southeast corner



© 2011 Google

©2010

Google

Eye alt 1995 ft

34°05'36.46" N 118°53'26.68" W elev 1356 ft

10/22/2007

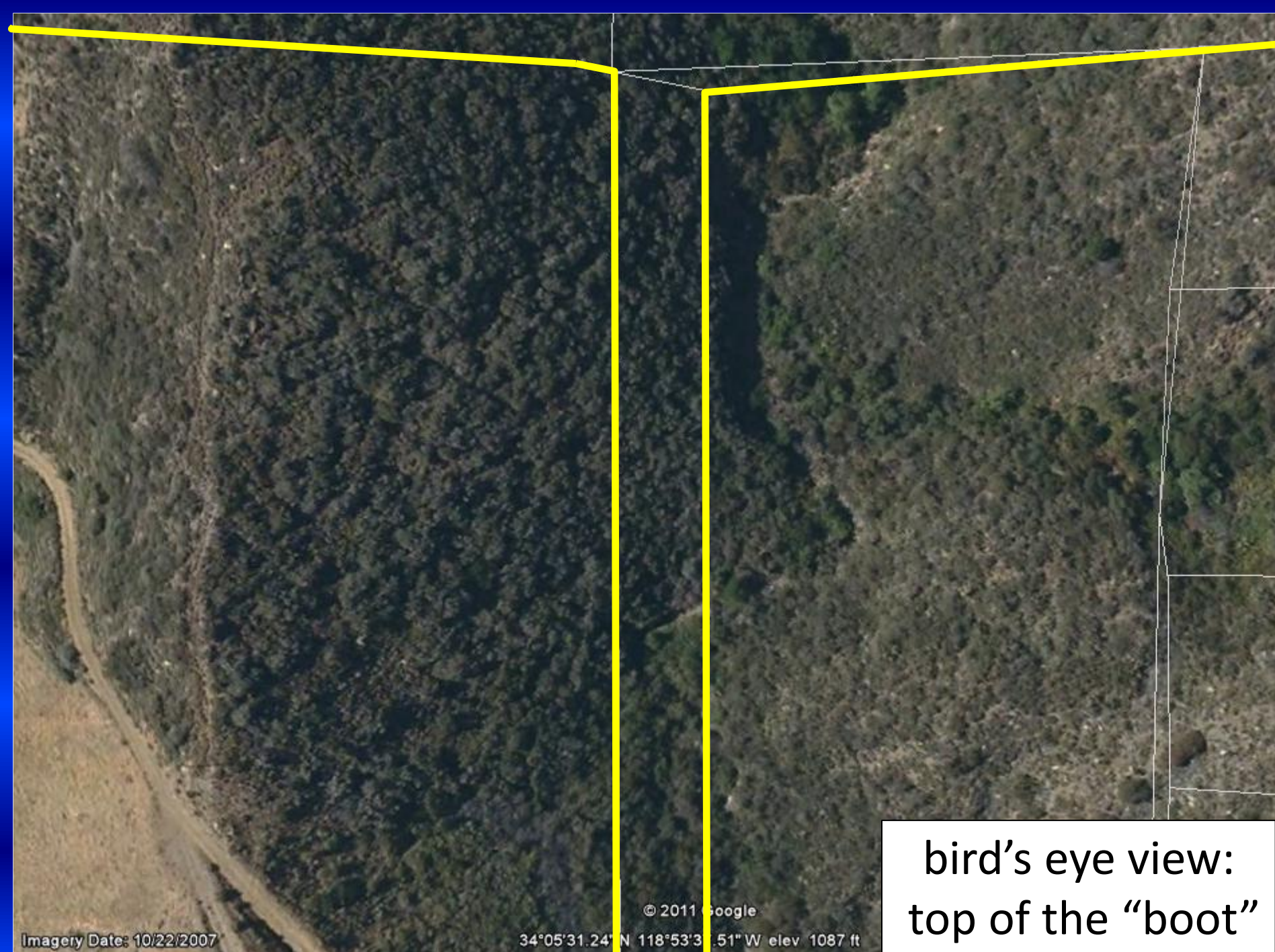


bird's eye view:  
Mulholland frontage

© 2011 Google

34°05'23.27"N 118°53'37.77"W elev 1073 ft

Image Date: 10/22/2007



bird's eye view:  
top of the "boot"

© 2011 Google

Imagery Date: 10/22/2007

34°05'31.24" N 118°53'31.51" W elev 1087 ft



Bird's eye view:  
south southwest corner

An aerial photograph of a densely forested hillside. A bright yellow line is drawn across the lower portion of the image, starting from the left edge, curving slightly, and then extending towards the right. The forest is a mix of dark green and brownish-green, suggesting different tree species or perhaps some dry patches. The overall view is from a high angle, looking down on the terrain.

bird's eye view:  
west southwest corner

© 2011 Google

34°05'48.67" N 118°53'50.43" W elev 1482 ft

©2010 Google

Eye a