

23 ACRES +/- CHESTERFIELD COUNTY, VIRGINIA

ASKING PRICE - \$199,500



REPRESENTED BY:

WILLIAM G. GRANT
ALC, VLS
(804) 754-3476

JEFFREY S. HUFF
ALC
(804) 750-1207

TABLE OF CONTENTS

- I. PROPERTY DESCRIPTION
- II. TAX MAP
- III. AERIAL PHOTOGRAPH
- IV. TOPOGRAPHIC MAP
- V. LOCATION MAP
- VI. FLYER

PROPERTY DESCRIPTION

The subject property is shown on Chesterfield County Tax Map records as GPIN number 7036596141. According to the tax records the property contains 23 acres. The deed is recorded in Deed Book 7169 on Page 413.

The subject property is currently zoned Agricultural. There are approximately 1,115 feet +/- of road frontage on Beach Road (State Route 655).

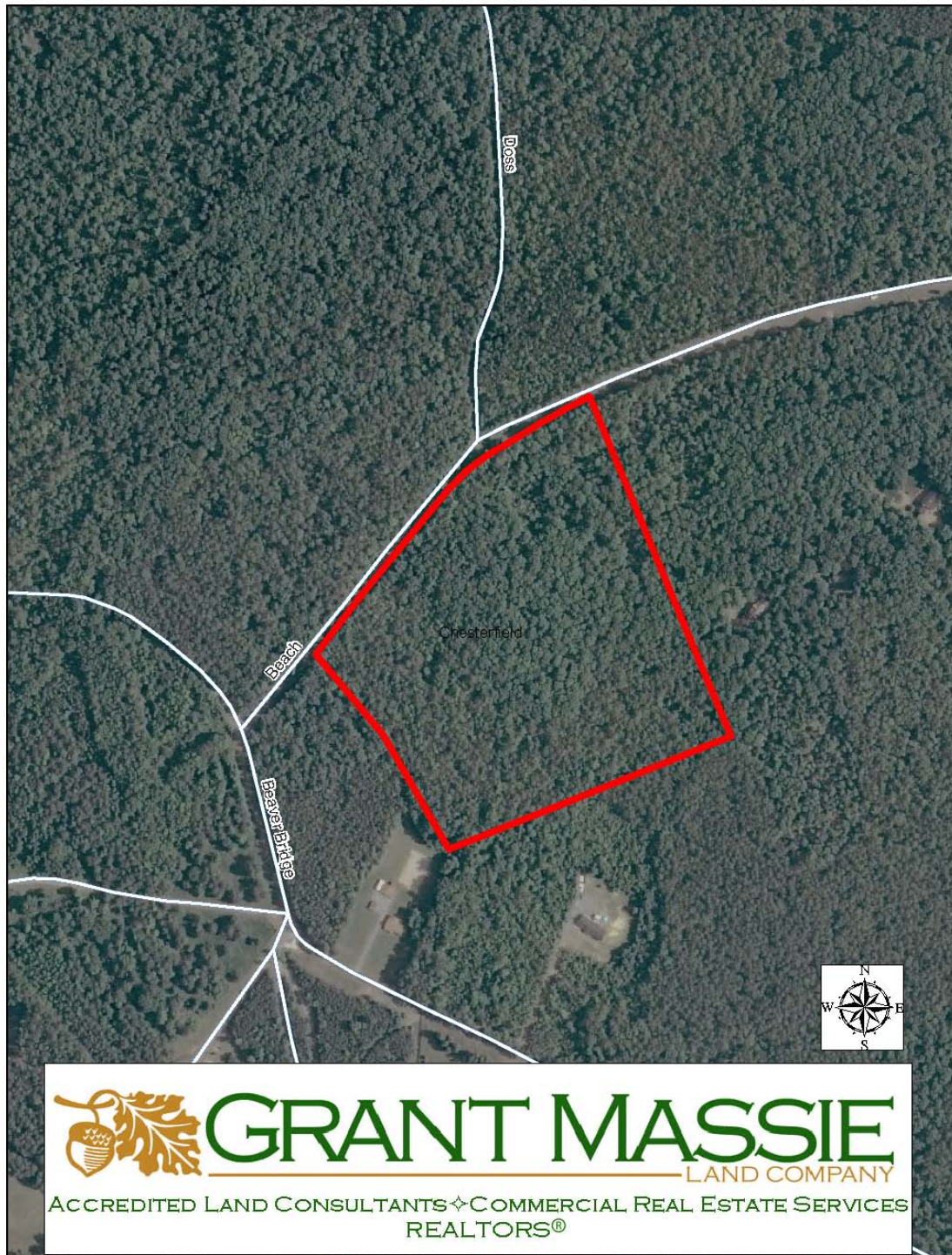
The formerly wooded tract was clearcut in late 2010.

The subject property is located convenient to Grange Hall Elementary School and Hull Street (Highway 360). It is located approximately 1.9 miles southeast of Hull Street and the school.

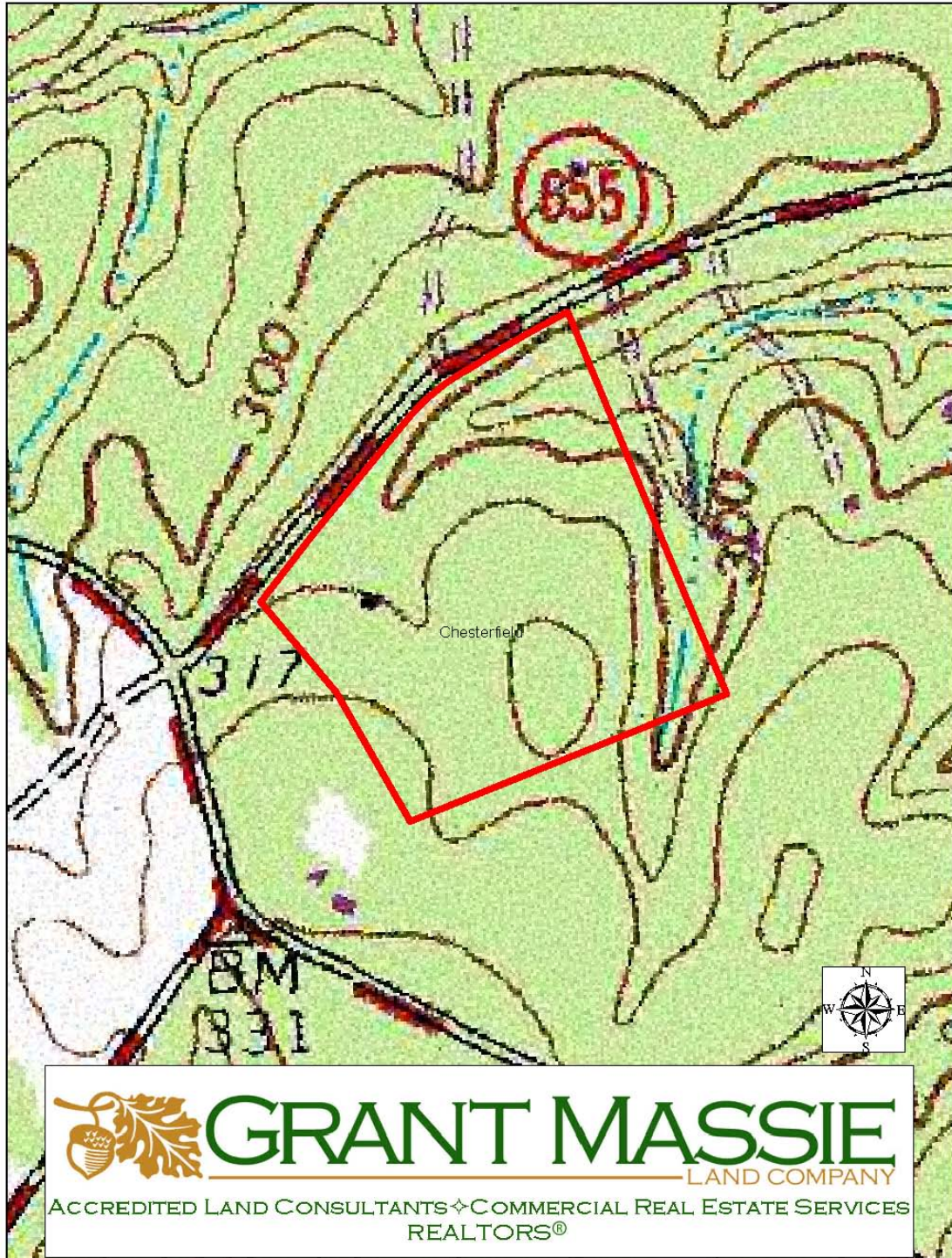
TAX MAP



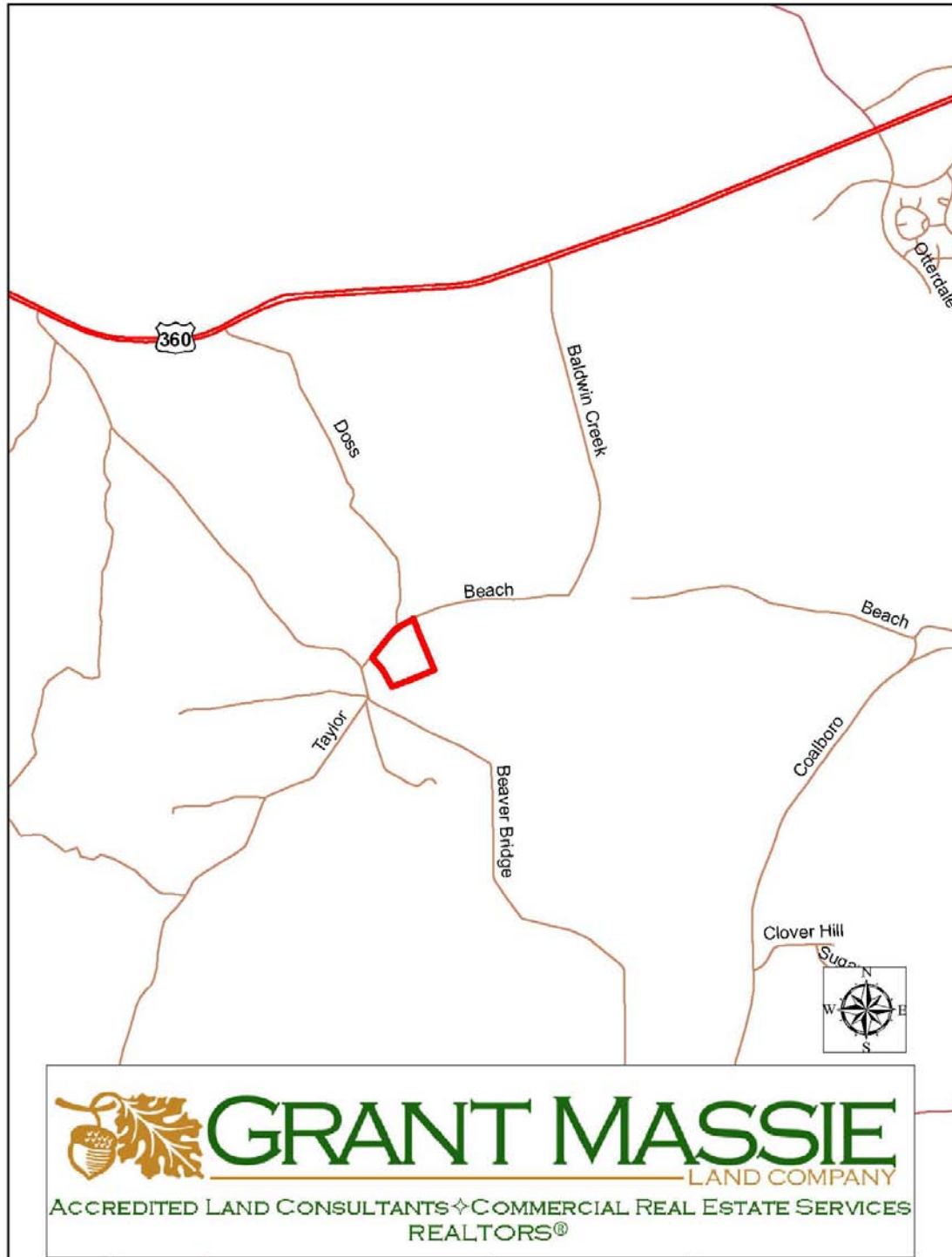
AERIAL PHOTOGRAPH



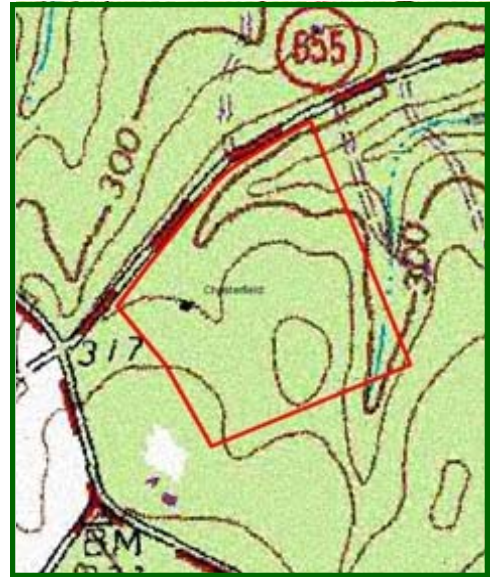
TOPOGRAPHIC MAP



LOCATION MAP



FOR SALE - 23 ACRES +/- IN CHESTERFIELD COUNTY



\$199,500

PROPERTY INFORMATION:

- RURAL BUILDING SITE(S)/INVESTMENT
- LOCATED CONVENIENT TO GRANGE HALL ELEMENTARY SCHOOL AND HULL STREET (1.9 MILES +/-)
- LONG ROAD FRONTAGE ON BEACH ROAD

REPRESENTED BY:

BILL GRANT

ALC, VLS

(804) 754-3476

wgrant@grantmassie.com

JEFFREY HUFF

ALC, FORESTER

(804) 750-1207

jhuff@grantmassie.com

FOR 24 HOUR A DAY RECORDED
INFORMATION

CALL LANDLINE **1-888-471-LAND #2162**

OR LOG ON TO OUR WEBSITE AT

www.GrantMassie.com



GRANT MASSIE
LAND COMPANY

ACCREDITED LAND CONSULTANTS ♦ COMMERCIAL REAL ESTATE SERVICES
REALTORS®

EXPERTISE—CONSULTATION—RESULTS

1403 PEMBERTON ROAD, SUITE 106

RICHMOND, VIRGINIA 23238

(804) 750-1200—TOLL FREE 1-800-665-LAND

ALL INFORMATION IS DEEMED RELIABLE, BUT NOT GUARANTEED.