

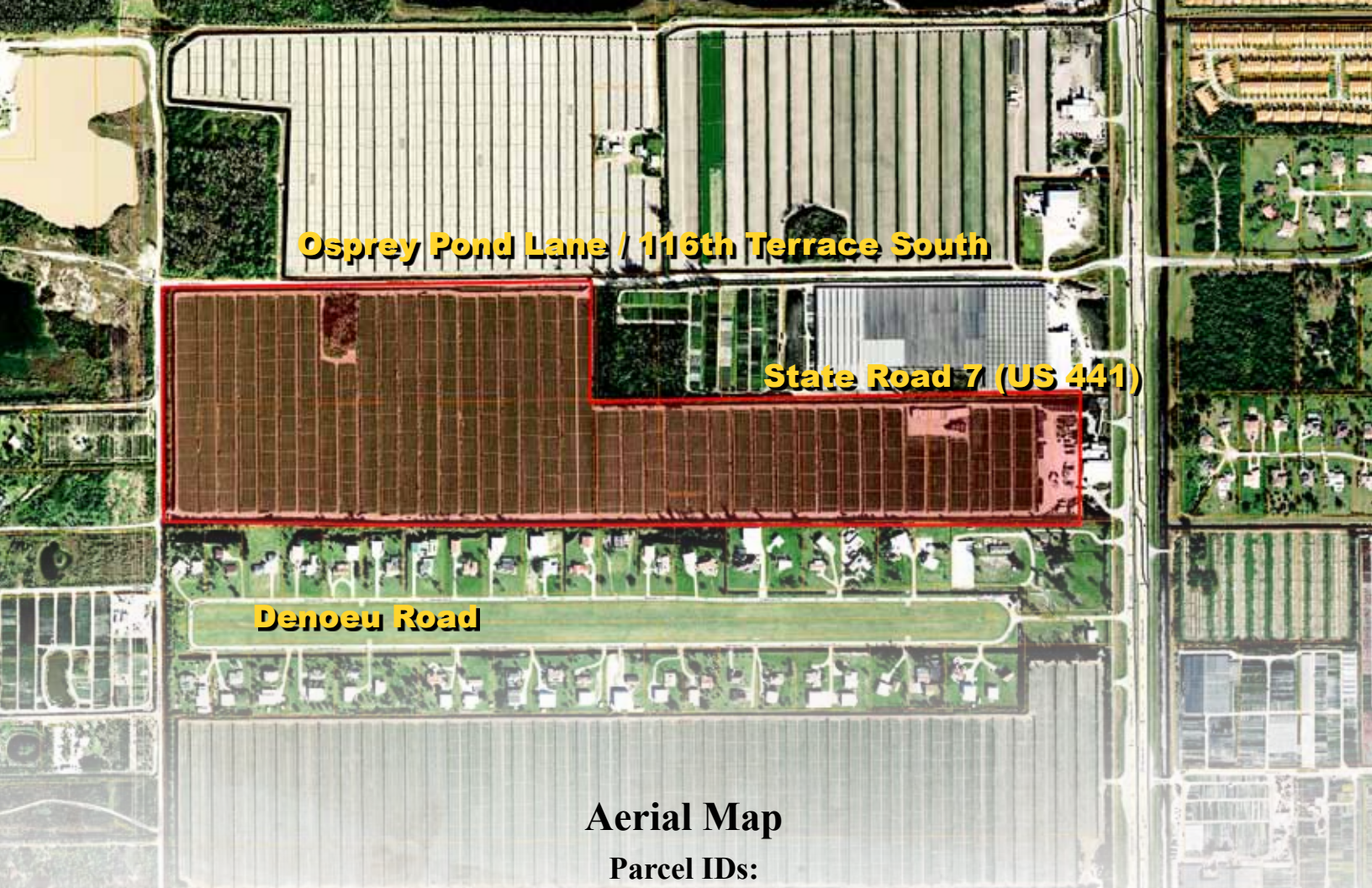


Prime Farm Area!
112 +/- Acres
Row Crop Farm
& Vegetable Packing

Row-crop Cultivation
in the Agriculture Reserve Area
of Unincorporated Palm Beach County, Florida

**Bank
Owned!**





Aerial Map

Parcel IDs:

00-41-45-13-00-000-1030, 00-41-45-13-03-001-0020,
00-41-45-13-03-001-0050, 00-41-45-13-03-001-0060,
00-41-45-13-03-001-0070, 00-41-45-13-03-001-0080

Improvements

Sheds, shop bays, storage buildings.
the majority of the property is cleared, laser-leveled,
and ditched for row-crop cultivation.





Boynton Beach, FL
112 +/- Acres

Description:

Great farming area includes 112 +/- acres total with approximately 100 acres of vegetable farm (pepper and tomatoes). Remaining acres are used for workshops, covered entrance areas, sheds, shop bays, and storage buildings. The property is located west of Boynton Beach. It is on the west side of State Road 7 (US Hwy 441) about 1.5 miles north of Boynton Beach Blvd. in the Agriculture Reserve Area of unincorporated Palm Beach County.

Total Acres: 111.99 +/- acres

Improved Acres: 111.99 +/- acres

Price: \$3,850,000

Nearest Intersection:

State Road 7 and Boynton Beach Blvd.

Location:

State Road 7

Boynton Beach, FL, Palm Beach County

Current Use: Agriculture

Uses: Farming and vegetable packing

Future Land Use/Zoning: ARG (Agricultural Reserve), has 15 TDRs

Land Use Plan: ARG (Agricultural Reserve)

Highest and Best Use: Continued agricultural use

Road Frontage: on State Road 7

Water provided by:

Lake Worth Drainage District

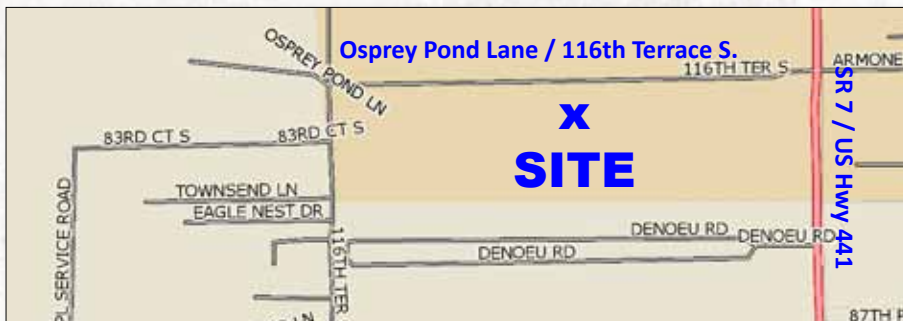
Utilities provided by: Florida Power & Light

Irrigation: Pumping/water control system





Boynton Beach, FL
112 +/- Acres



Driving Directions

- Take I-95 or the Florida Turnpike to Boynton Beach Blvd.
- Go west on Boynton Beach Blvd. to State Road 7 (US 441)
- Go north on State Road 7 for approximately 1.5 miles to farm
- Farm is located on the west side of State Road 7 (US 441)
- Look for the blue and white CBC Saunders Real Estate sign

112 +/- Acres

**Row Crop Farm
& Vegetable Packing**

***Agriculture Reserve Area
of Unincorporated
Palm Beach County***



SAUNDERS

REAL ESTATE

***Land · Conservation
Land Management***

114 Tennessee Ave.

3rd Floor

Lakeland, FL 33801

Toll Free: 1-877-518 LAND

www.saundersrealestate.com

©2011 Coldwell Real Estate Corporation. Coldwell Banker Commercial® is a registered trademark licensed to Coldwell Banker Real Estate Corporation. An Equal Opportunity Company. Each Office is Independently Owned And Operated. Every attempt is made accurate information on this property as possible, however, COLDWELL BANKER COMMERCIAL SAUNDERS REAL ESTATE (CBCSRE) does not guarantee the accuracy. Buyer should rely entirely on their own research, inspection of property, and records. ©2011 Coldwell Banker Commercial Saunders Real Estate, All Rights Reserved, Worldwide. All content is the property of CBCSRE. You may not copy or use this material by any means, in any form without written consent from CBCSRE.

032811-DG