



# EQUINE HOMES®

## REAL ESTATE PROFESSIONALS

### *Own a Part of An Equestrian Paradise*

Unique opportunity to live where you ride or simply enjoy owning a newly renovated condominium adjoining an equestrian center with 31 stall barn, indoor & outdoor arenas and great turnout. The condominiums are beautifully finished with granite counter tops & rich hardwood floors. Each unit has warm natural light and a private deck, patio or porch. Purchase or lease a stall for your horse. Purchasing provides the benefit of ownership, a reduced monthly boarding rate and the opportunity for resale. Pets allowed with approval. HOA fee subject to change.

One bedroom condominiums offer a variety of options from convenient first floor settings to the drama of penthouse living with a deck overlooking the grounds. Kitchens have maple and walnut cabinets, granite counter tops & Frigidaire appliances.

#### **Condominiums for Sale**

Unit 1	\$159,000
Unit 2	\$189,000
Unit 4 Model	\$174,000
Unit 6 Penthouse	\$199,000
Unit 7 Cottage	\$239,000

1 Car Garage \$20,000  
(2 car quoted upon request)

#### **Horse Stalls for Sale**

Horse stalls	\$50,000
Pony stalls	\$45,000

#### **Horse Stalls for Lease**

Horse stalls	\$1,200 per month
Pony stalls	\$1,100 per month

*Lease prices subject to change*

706 sf – first floor with patio  
740 sf – first floor with porch  
735 sf – second floor with deck  
1025 sf – third floor with deck  
645 sf – detached Cottage with deck

#### **Amenities:**

One Zone Heat: Natural Gas  
Utility Connection: Natural Gas

#### **Additional Outdoor Living Space**

Unit 1 Patio – 392 sf  
Unit 2 Farmer's Porch – 102 sf  
Unit 4 Deck – 240 sf Model  
Unit 6 Deck – 121 sf Penthouse  
Unit 7 Deck – 192 sf  
Cottage lot is 5268 sf

HOA for Condominiums:

Estimated at \$225. *Subject to change*

HOA for Stalls: TBD – Preliminary marketing.



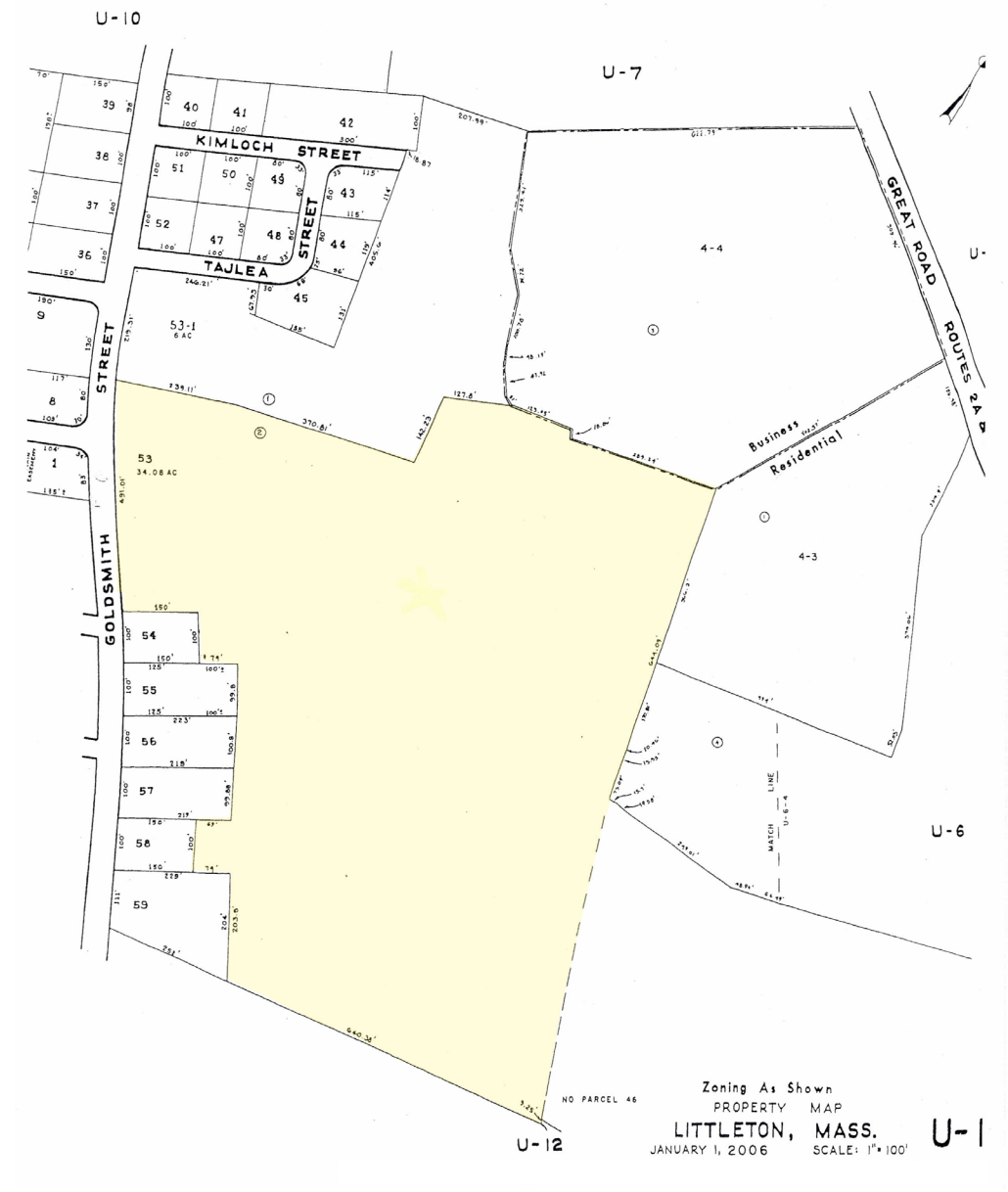
ON THE RAIL FARM

*Live Where You Ride*





PLOT PLAN



Outdoor riding arena approximately 180 x 300



Indoor riding arena approximately 180x 80





