

# Double E Ranch Gila, NM



*Ranch with open Access to 3 million Acres of  
National Forest and Wilderness Lands!*

*This ranch is situated in the high-desert area of Southwest New Mexico, amidst the vast rugged foothills of the Mogollon Mountains. The Gila National Forest with all of its hunting, hiking and scenic beauty not only borders the ranch to the north but approximately 11,000 acres are part of the ranch grazing lands.*



Dale Spurgeon 1-888-874-9891 [www.actionrealtynewmexico.com](http://www.actionrealtynewmexico.com)







*Beautiful Bear Creek meanders through the middle of the ranch providing habit for the wildlife and water for stock. Running water is rare find in the desert southwest, yet this ranch enjoys Bear Creek on both deeded land and BLM Leased Land. Deer, Bear, Lion, Big Horn Sheep, Javelina are among the wildlife that call the creek home.*

*Remote, Private, Secluded, Beautiful, Rugged are all words that describe this special spot in New Mexico. Prehistoric tribes inhabited this land. They left evidence of their journey in the canyons and valleys. Outlaws looking for a place to hide while the trail cooled, sought hideouts like this property. Ride or hike for hours and not see a human nor hear anything but calm. This is a retreat from the noise and stress in everyday life.*



Dale Spurgeon 1-888-874-9891 [www.actionrealtynewmexico.com](http://www.actionrealtynewmexico.com)





*Turtle Mountain is one of the areas to draw hunts for the big horn sheep. They roam the mountains just east of the headquarters using Bear Creek as their watering hole. These beautiful animals are amazing to watch maneuver the bluffs along the creek.*



*Deer, Bear, Lion and other wildlife are seen on the ranch and their tracks tell the story of their travels. Elk abound in the Gila National Forest and Wilderness area to the North of the Headquarters.*



*Eagles, Hawks, Turkey, Quail, other birds of prey and song birds nest throughout the Ranch.*



Dale Spurgeon 1-888-874-9891 [www.actionrealtynewmexico.com](http://www.actionrealtynewmexico.com)





*Headquarters include Ranch house, four Guest Cabins, Stud Barn, Larger barn with corrals, Equipment Shed, Cantina and Bunk House.*



*Approximate Acreage*

*6,200 Acres Deeded*

*3,650 Acres BLM Lease*

*2,495 Acres State Lease*

*11,000 Acres National Forest Lease*

*10.75 acres of irrigation water rights coming from Bear Creek*

*Cattle, horse, Double E Ranch name and the Double E Brand are excluded from the sale.*

*\$3,800,000 for the entire Ranch*

*\$980,000 for 1700 acres from Bear Creek to the National Forest*

*\$395,000 for 500 acres bordering Bear Creek, and BLM*

The information in this brochure is deemed reliable, but not guaranteed. You are hereby advised to verify all information.



**Dale Spurgeon 1-888-874-9891 [www.actionrealtynewmexico.com](http://www.actionrealtynewmexico.com)**





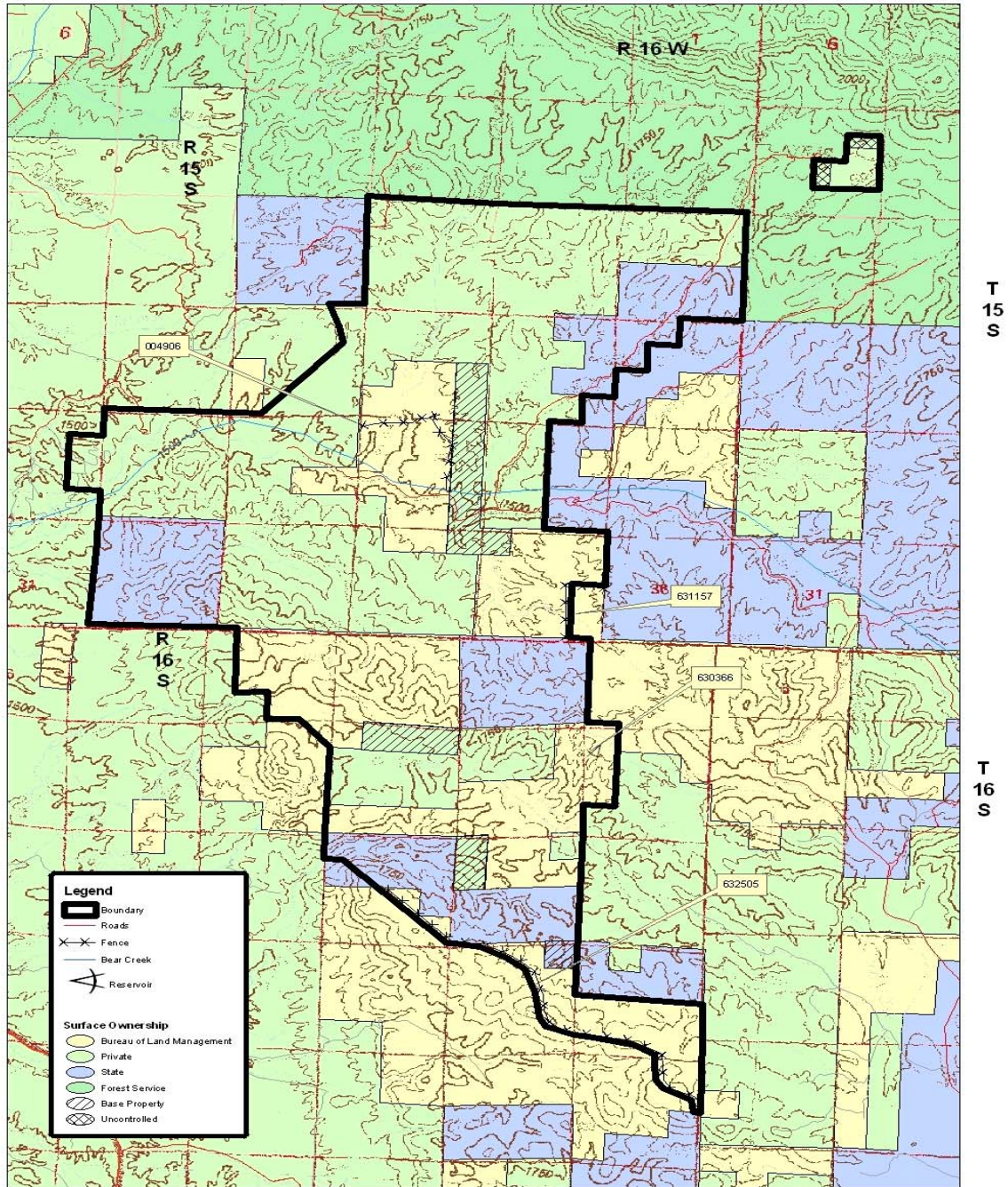


Official Allotment Map  
STONE CANYON LEASE NO. 04528

R 16 W

Authorized Officer

Date



No Warranty is made by the Bureau of Land Management as to the accuracy, reliability, or completeness of these data for individual use or aggregate use with other data, or for purposes not intended by the BLM. Spatial information may not meet National Map Accuracy Standards. This information is subject to change without notification.

0 0.3 0.6 1.2 1.8 2.4 Miles

*Stone Canyon Bureau of Land Management Allotment.  
BLM Allotment for 58 Head*





*Google Earth map of the Spar Canyon Forest Allotment. This allotment allows 75 head year round.*