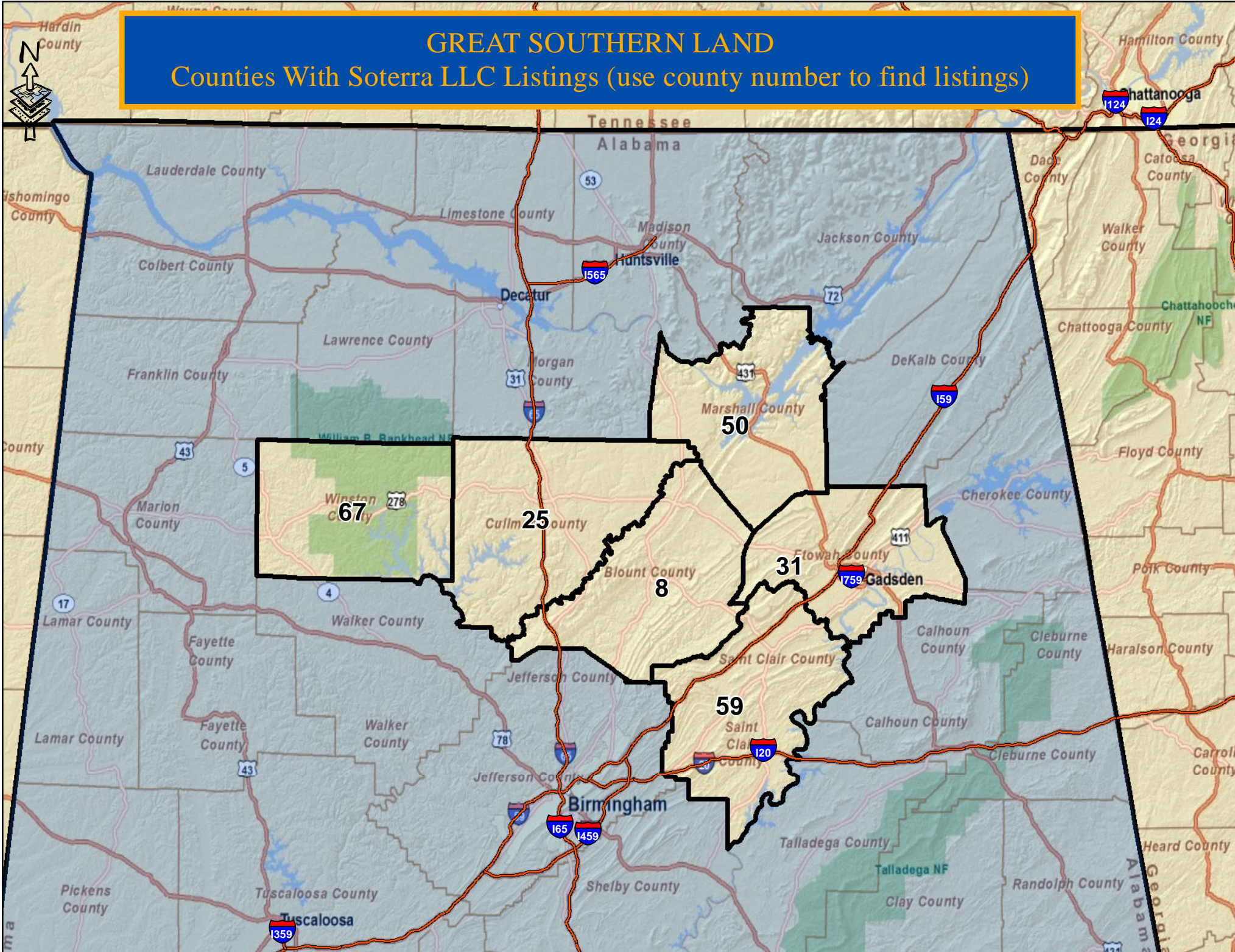
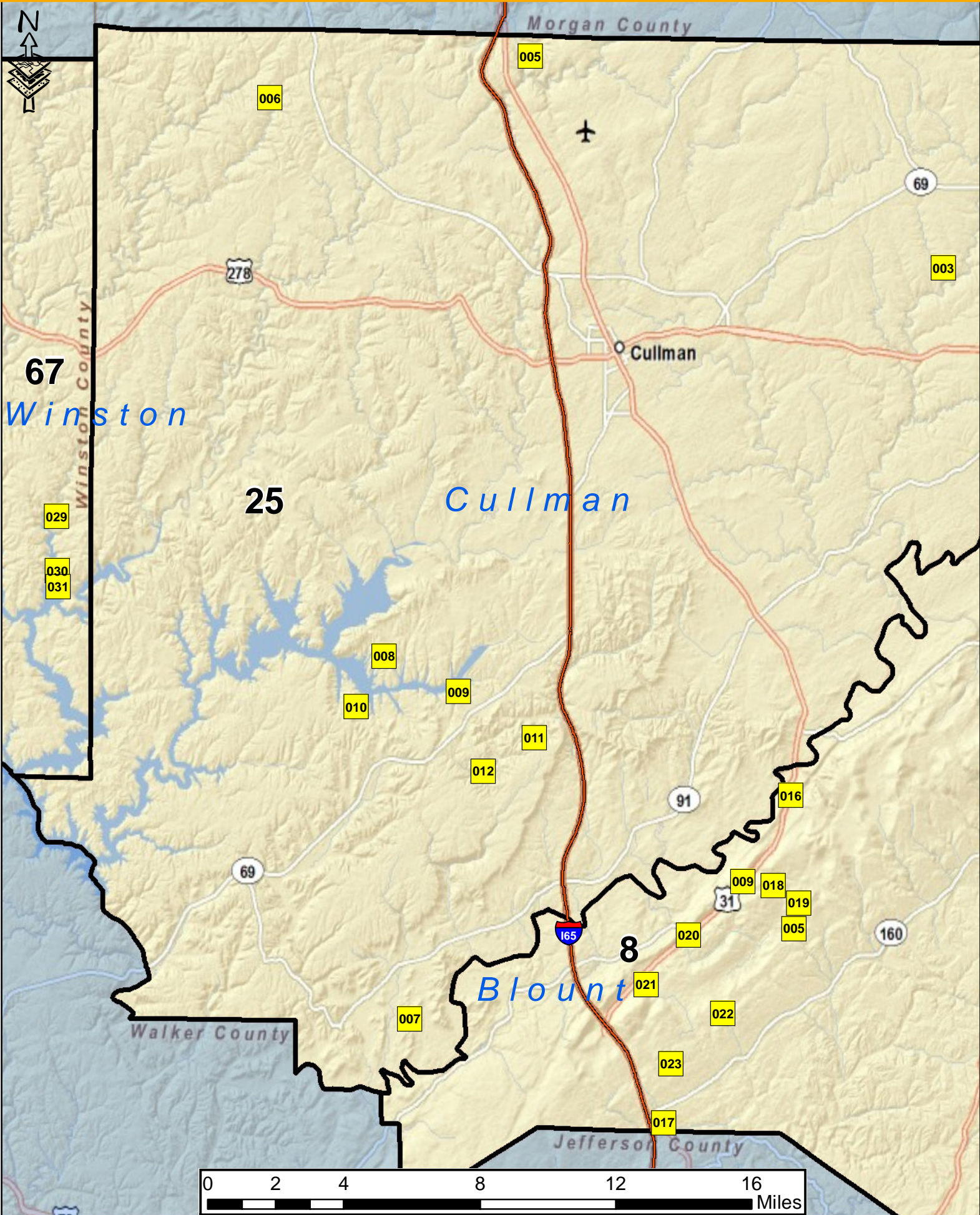


# GREAT SOUTHERN LAND

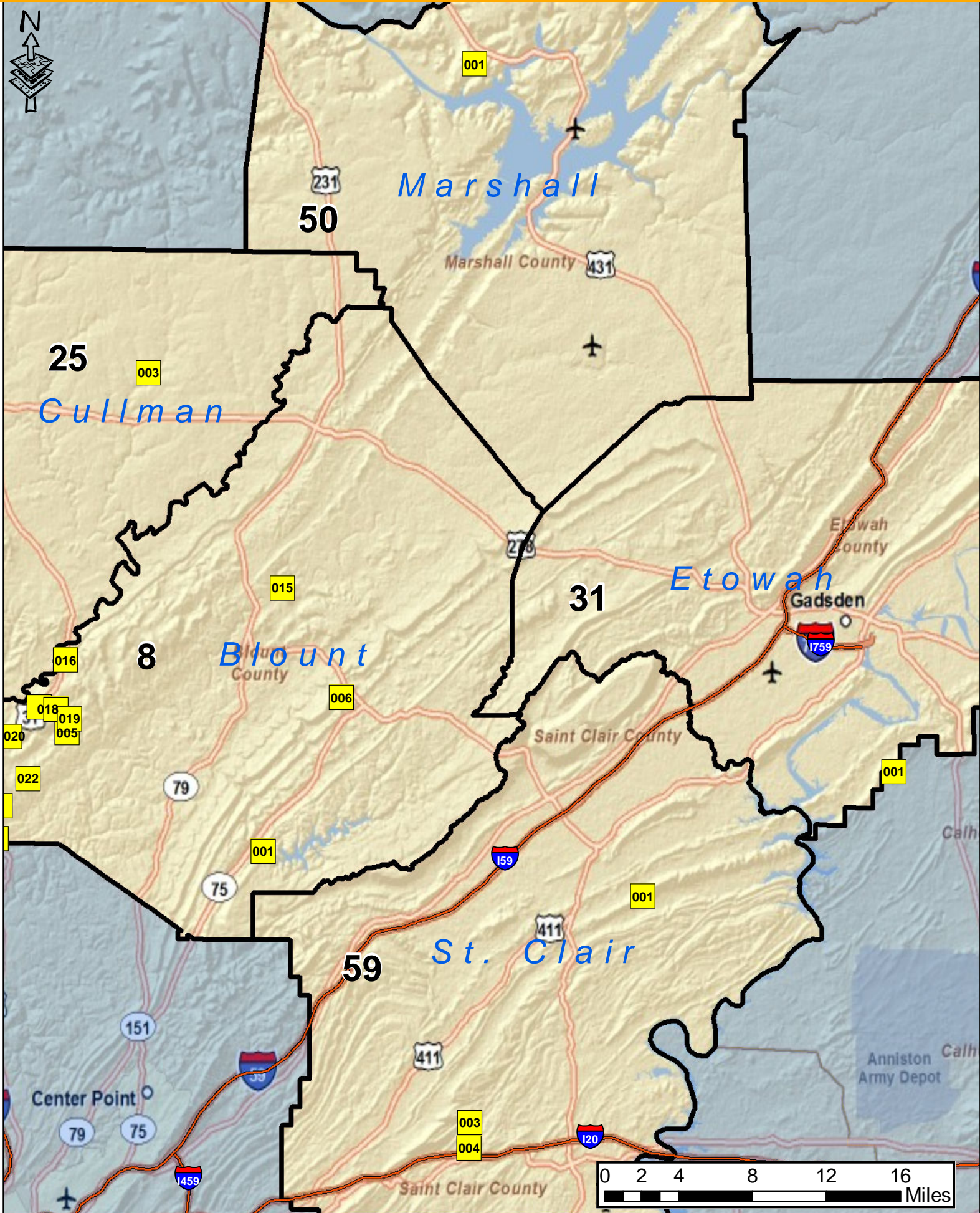
Counties With Soterra LLC Listings (use county number to find listings)











**Soterra LLC Tracts Offered By Great Southern Land as of September 28, 2010**  
**www.GreatSouthernLand.com**

**Wetumpka Office (800) 782-5263 or (334) 567-0924 4027 US Highway 231, Wetumpka, AL 36093**

Agent	Email	Office	Cell
FM - Fletcher Majors, ALC	<a href="mailto:fletcher@greatsouthernland.com">fletcher@greatsouthernland.com</a>	(334) 567-0924 ext. 205	(334) 328-9278
BA - Bill Atkins	<a href="mailto:batkins@knology.net">batkins@knology.net</a>	(334) 567-0924 ext. 207	(334) 399-9397
ES - Eddie Stone, RF	<a href="mailto:edstone@windstream.net">edstone@windstream.net</a>	(205) 702-4420	(205) 837-4466

The list below is sorted by our ID Number which start off with the county tag number followed by a number for the tract within that county. Some properties that are offered as a whole or in parts will also have a letter after the tract number. To see the location of a tract ask an agent for the map by letter from the "Map" column. For more information on the property for sale in the list below call or email the contact whose initials show up in the column labeled "Contact". A list of the agent contact information is included above.

You may also visit our website [www.GreatSouthernLand.com](http://www.GreatSouthernLand.com) and enter the ID Number in the search box. To see all listings in a county type the county name "Wilcox" in the search box.

ID	County	Tract	Acres	Price	Per Acre	Comments
08-001	Blount	Pine Mtn North 40	40.0	48,001	1,200	Ridgetop views south of Oneonta
08-005	Blount	Graves Gap 107	107.0	208,650	1,950	Beautiful recreational tract north of Hayden, public road frontage
08-006	Blount	Sand Mtn 85 <b>SOLD</b>	85.0	106,250	1,250	Good recreational tract in Oneonta City Limits
08-009	Blount	Blount Springs 37 <b>SOLD</b>	37.0	48,001	1,297	Frontage on US Hwy 31
08-015	Blount	Locust Fork	16.5	62,044	3,751	Paved road frontage, northeast of Cleveland
08-016	Blount	Bangor Cave Hwy 31	5.0	9,043	1,805	Small tract
08-017	Blount	Park & Ride	40.0	148,843	3,725	Southern Blount County near Hwy 160 at the Hayden Exit
08-018	Blount	Blount Springs 200	206.1	392,451	1,905	
08-019	Blount	Cox Cove	39.6	64,077	1,619	Rural timberland north of Hayden
08-020	Blount	Blue Hole <b>SOLD</b>	45.7	163,664	3,580	Fronts US Hwy 31, adjacent to The Village at Blount Springs
08-021	Blount	Smokerise 40	43.1	171,797	3,984	Adjacent to Smoke Rise subdivision
08-022	Blount	Chaly Springs Road	40.2	99,930	2,486	Pre-merchantable pine, 1.5 miles west of Hayden
08-023	Blount	Smokerise 80	81.9	339,184	4,141	Adjacent to Smoke Rise subdivision
25-003	Cullman	Duck River 40	40.0	48,000	1,200	Possible 9 acres to be impounded for water reservoir
25-005	Cullman	Wilhites East 46	46.0	57,500	1,250	Wooded tract, northern Cullman County
25-006	Cullman	Battleground	163.0	414,407	2,543	Northwest Cullman County on Jones Creek
25-007	Cullman	Arkadelphia 40	41.1	128,500	3,127	Southern most part of Cullman County, southeast of the Arkadelphia community
25-008	Cullman	Catalina	200.5	817,053	4,076	Frontage on Smith Lake, approximately 4 miles west of Dodge City
25-009	Cullman	Simpson Creek	40.0	144,011	3,597	County Road frontage in Dodge City area
25-010	Cullman	Bremen	39.7	99,515	2,509	Dodge City area, north of Hwy 69
25-011	Cullman	Shelton Grove	80.9	237,451	2,935	Nice timber, south of Dodge City
25-012	Cullman	Pewter Creek	25.7	76,182	2,961	Pewterfork Creek, south of Dodge City
31-001	Etowah	Greens Creek Mtn 240	237.0	225,149	950	South of Gadsden on the Etowah/Calhoun County line, good recreational tract with ridgetop views
50-001	Marshall	Guntersville	557.5	1,936,224	3,473	Large timbered tract on Lake Guntersville
59-001	St. Clair	Beaver Creek Mtn 76	76.0	129,200	1,700	11 year old pine, southeast of Ashville
59-003	St. Clair	Cook Springs 41	41.0	98,400	2,400	Just north of I20, west of Pell City
59-004	St. Clair	Chulavista 40	40.0	96,000	2,400	Just north of I20, west of Pell City
67-029	Winston	White Oak Acres	116.0	361,278	3,116	Fully timbered with mature hardwoods and pine on Smith Lake
67-030	Winston	White Oak Cove <b>SOLD</b>	3.8	34,748	9,144	Frontage on Smith Lake
67-031	Winston	White Oak Creek	4.7	44,500	9,468	Frontage on Smith Lake