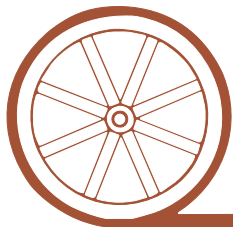


# LAND FOR SALE

## Old Homestead Ranch



- Location:** This McPherson County property is located 28 miles northwest of North Platte, or 4.5 miles south of Tryon, Nebraska.
- Legal Description:** S½SW¼ 22-T18N-R32W; NW¼SW¼, W½NW¼ 25-T18N-R32W; All 26-T18N-R32W; All 27-T18N-R32W; S½NE¼, SE¼ 33-T18N-R32W; NE¼, W½ 34-T18N-R32W; N½ 35-T18N-R32W; S½SE¼, W½ 3-T17-R32W; All 9-T17N-R32W; N½ 10-T17N-R32W of the 6<sup>th</sup> P.M. Subject to existing fence boundaries.
- Acreage & Soils:** 3,880 taxed acres. The property consists of sandhills range. Rangeland soils are Valentine fine sands with rolling to hilly topography.
- Taxes:** 2009 Real Estate Taxes payable in 2010 are: \$11,992.38
- List Price:** **\$1,455,000.00 (\$375/acre)**
- Possession:** Possession shall be delivered to purchaser at closing.
- Comments:** Good access to this productive summer range with livestock water provided by new submersible well and extensive pipeline, plus 10 windmills. All well sites have windmills with steel towers and are in good condition.
- Contact:** **Bruce Dodson – Listing Agent, ph. 308-539-4455**, email: [bruce@agriaffiliates.com](mailto:bruce@agriaffiliates.com)  
Mike Polk, Loren Johnson, Duane McClain at 308-534-9240.



*Offered Exclusively By:*

## AGRI AFFILIATES, INC.

*...Providing Farm - Ranch Real Estate Services...*

**NORTH PLATTE OFFICE**

P.O. Box 1166

I-80 & US Hwy 83

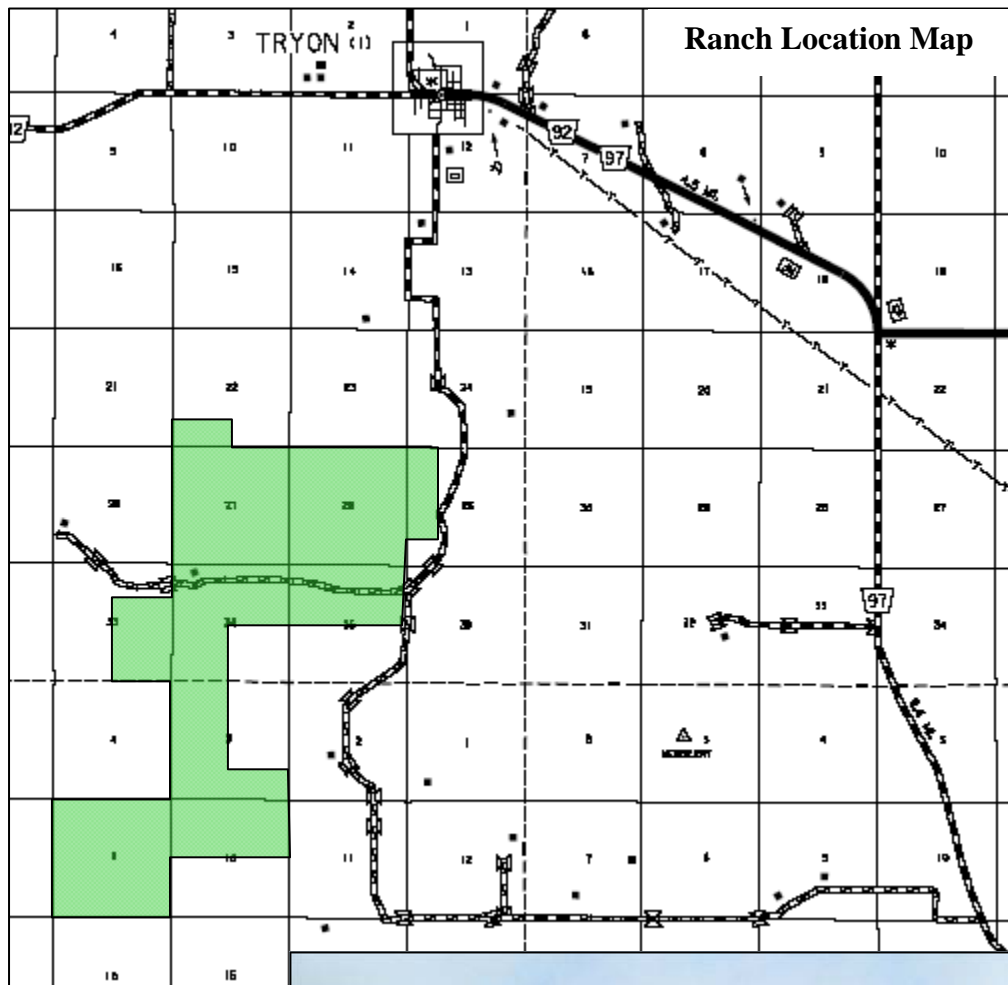
North Platte, NE 69103

[www.agriaffiliates.com](http://www.agriaffiliates.com)

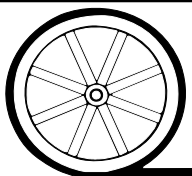
**(308) 534-9240**

Telecopier (308) 534-9244

Information contained herein was obtained from sources deemed reliable. We have no reason to doubt the accuracy, but we do not guarantee it. Prospective Buyers should verify all information, including items of income and expense. All maps provided by Agri Affiliates, Inc. are approximations only, to be used as a general guideline, and not intended as survey accurate.



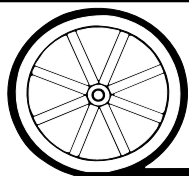
All maps provided by Agri Affiliates, Inc. are approximations only, to be used as a general guideline, and not intended as survey accurate.



**AGRI AFFILIATES, INC.**

*...Providing Farm - Ranch Real Estate Services...*





# AGRI AFFILIATES, INC.

***...Providing Farm - Ranch Real Estate Services...***

All maps provided by Agri Affiliates, Inc. are approximations only, to be used as a general guideline, and not intended as survey accurate.