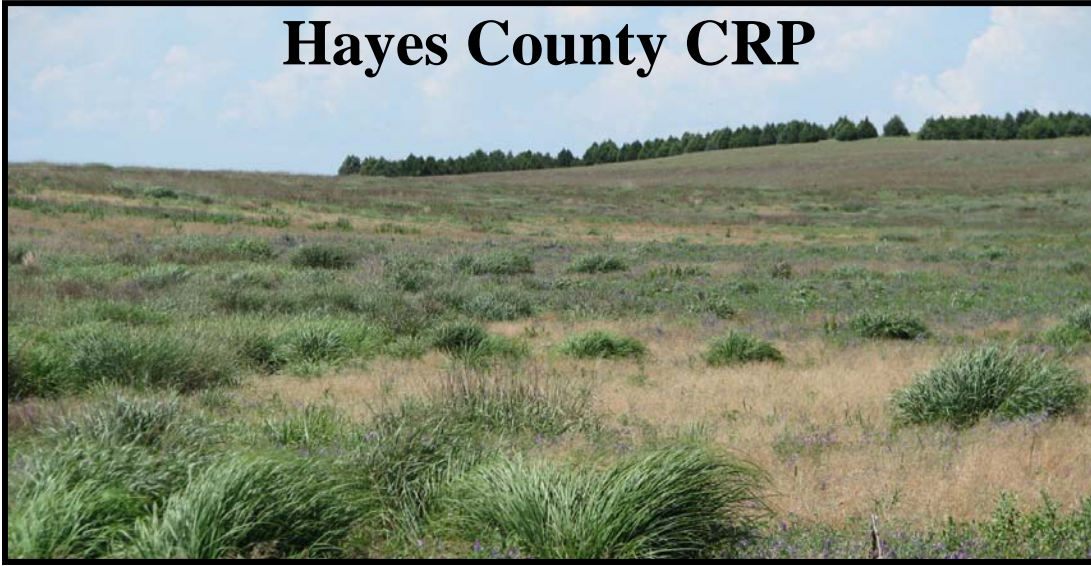


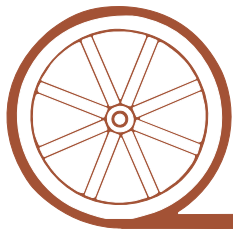
LAND FOR SALE

Hayes County CRP



- Location:** Northwest Hayes County, 13 miles south of Grafton, Nebraska, and 3.5 miles East to the Northwest corner of property
- Legal Description:** E1/2 Section 30-T8N-R34W of the 6th P.M., Hayes County, NE.
- Acres:** 313.0 Taxed Acres
- Taxes:** 2009 Real Estate tax payable in 2010, \$1,625.67
- Land Use:** All enrolled in USDA conservation reserve program.
- FSA Info:** South Quarter - CRP contract #226E, Annual Payment \$3,904.00, Contract Expires Sept. 30, 2010
North Quarter - CRP contract #248E, Annual Payment \$4,437.00, Contract Expires Sept. 30, 2011
- Soils:** Mostly Sarben loamy fine sand 3-9% slope Class IV, small quantities of other soils.
- Improvements:** No value, abandoned.
- Price:** \$146,500
- Comments:** No crop base. Excellent access with county road on north & east. Electricity and phone available. Break for farming or possible re-bid for CRP. Seller to retain 2010 payments.
- Contact:** Loren Johnson, Listing Agent: 308-539-4452 or email: loren@agriaffiliates.com
Mike Polk, Bruce Dodson, Jerry Weaver, Duane McClain

Offered Exclusively By:



AGRI AFFILIATES, INC.

...Providing Farm - Ranch Real Estate Services...

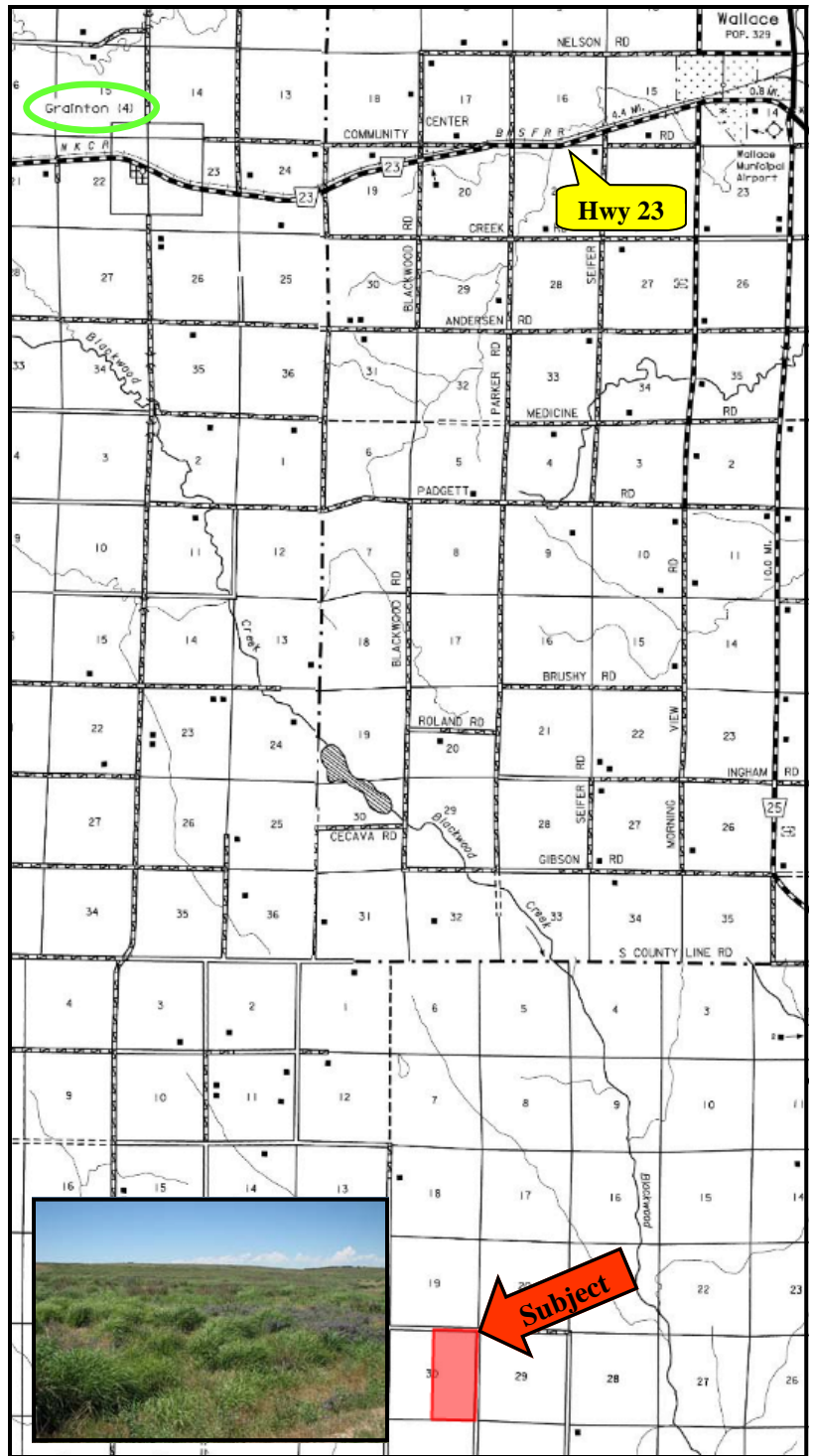
NORTH PLATTE OFFICE

P.O. Box 1166
I-80 & US Hwy 83
North Platte, NE 69103
www.agriaffiliates.com

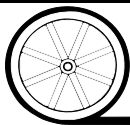
(308) 534-9240

Telecopier (308) 534-9244

Information contained herein was obtained from sources deemed reliable. We have no reason to doubt the accuracy, but we do not guarantee it. Prospective Buyers should verify all information, including items of income and expense. All maps provided by Agri Affiliates, Inc. are approximations only, to be used as a general guideline, and not intended as survey accurate.

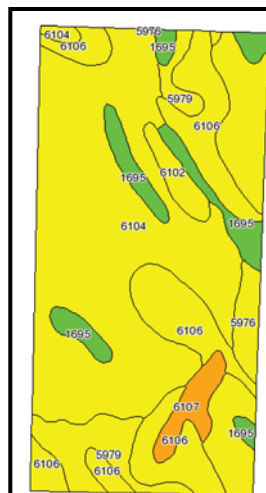


All maps provided by Agri Affiliates, Inc. are approximations only, to be used as a general guideline, and not intended as survey accurate.



AGRI AFFILIATES, INC.

...Providing Farm - Ranch Real Estate Services...



Code	Soil Description	Acres	Percent of field	Non-Irr Class Legend	Non-Irr Class	Irr Class	SRPG	Alfalfa hay	Alfalfa hay Irrigated	Corn	Corn Irrigated	Grain sorghum	Grain sorghum Irrigated	Winter wheat
6104	Sarben loamy very fine sand, 3 to 6 percent slopes	173.1	57.9%		IVe	IVe	49	1.4	3.5	20	100	30	80	25
6106	Sarben loamy very fine sand, 6 to 9 percent slopes	60.2	20.1%		IVe	IVe	47	1.2	3.2		100		75	22
1695	McCash very fine sandy loam, 0 to 1 percent slopes	22.3	7.5%		IIc	IIe	66	2.5	4.8	50	130	45	130	40
5979	Jayem loamy very fine sand, 3 to 6 percent slopes	21.1	7.0%		IVe	IVe	44	1	3.8	20	100	30	80	22
6107	Sarben loamy very fine sand, 9 to 20 percent slopes	8.6	2.9%		VIIe		40	1	2.5	15	90	25	65	20
5976	Jayem loamy very fine sand, 0 to 3 percent slopes	7.1	2.4%		IIIe	IIIe	50	1.3	4.5	25	120	35	90	25
6102	Sarben loamy very fine sand, 0 to 3 percent slopes	6.5	2.2%		IIIe	IIIe	51	1.5	4	23	105	32	85	25
Weighted Average							49.3	1.4	3.6	18.3	102.6	25.1	82.7	25.2