

(1)

47.659 Ac

Kelly Carr

Don C. Anderson

Festive - 15th

1154/890

Anderson C

1301

Lola Wilchite Magee

1378/329

257/103

297/553

A. DUNBAR W. 1961  
R.O.P. 36-1961  
SEE BOX

8.440  
1378/329

(4)  
98.16 Ac.



D.A. BUDGET MARK W. MAGEE  
297/03 1558/573

MARK W. MAGEE  
1558/573

(2)  
14.45 Ac.

(3)  
8.132 Ac.  
JASON N 1578/852  
1265/712  
885.38

(4)  
8.842 Ac. 1933/348  
JESSIE C. LIGHT  
1425/0

(4A)  
1265/720  
JESSIE C. LIGHT  
1425/0

(7)  
9.532 Ac.  
CHARLA LINK  
1193/302  
1532/464

(430)  
9.54  
N.R. LINK

(6)  
64.229 Ac. 954/752  
JOE P. GRUMBLES  
(LIFE EST.)

(7A)  
JOE PAUL GRUMBLES

(7)  
17.633 Ac.

(8)  
5.04 Ac.  
JOE H. BUTLER  
1395/585

(8A)  
12.59 Ac.  
LAHAYNE SURETTE  
ERUMBLE  
752/420  
786/155  
800/995  
1277

(5C)  
29.209 Ac.  
(.4324 in Rd)

1203/783-787

JOE P. GRUMBLES  
1320/729  
DEWAYNE  
GRUMBLES  
1983/1441

(5A)  
14.0045 Ac. (2083 Rd)  
1203/1471  
4.8682 Ac. LAURA ALLISON SHIVERS  
(5A-1) 4.8682 Ac. NAOMI ALLISON TURK  
(5A-2) 4.8681 Ac. FRANCES ALLISON ECHMAN

(5E)  
14.0045 Ac. (2055 Rd)  
1203/775-779

FRANCIS LINK SIMMONS TRACT  
1333/758  
2104.03

(5D)  
29.209 Ac.  
(.4075 in Rd)

DARWIN B. OR  
JOAN B. LINK-  
TRUSTEES  
1543/530

(5B)  
14.0045 Ac. (2064 Rd)  
1203/143  
7.3023 Ac. JOHN FERGUSON  
(5B-1) 7.3023 Ac. KATHY FERGUSON LEHMAN

PIRE

LINE

S. LINE HENRY MCKINLEY A-522 IN COM PLOT

E. LINE HENRY MCKINLEY A-522

J.D. SMU  
A-105

**MAGEE PROPERTY  
(aka DESTINY RANCH)  
7249 N. HWY. 19  
PALESTINE, TX. 75703**

<b>Living Room</b>	<b>13.5 x 20</b>	<b>Notes: Stacked stone fireplace with simulated white tile ceiling</b>
<b>Dining Room</b>	<b>13 x 23</b>	<b>This includes small area for foyer at front door</b>
<b>Master Bedroom</b>	<b>16 x 18</b>	<b>Has wonderful glass sitting room facing lake</b>
<b>Sitting/Sun Room</b>	<b>7 x 10</b>	
<b>Master bath</b>		<b>2 separate vanity areas, one with tub</b>
<b>2<sup>nd</sup> bedroom</b>	<b>12 x 16</b>	<b>Has walk in closet</b>
<b>Kitchen</b>	<b>9 x 14.5</b>	<b>Granite counter, ceramic tile, under counter lights. Has breakfast bar.</b>
<b>Full bath</b>	<b>8 x 9</b>	<b>Off utility room and carport Pedestal sink, closet with a/c &amp; w/h</b>
<b>Glass Sun Porch</b>	<b>12x 23</b>	<b>Gorgeous views a lakes and woods</b>
<b>Flex space/Bonus</b>	<b>7 x 9</b>	<b>Could be 3<sup>rd</sup> bedroom with small remodel.</b>
		<b>Roof is 7 years old. Many updates throughout house</b>
<b>Attached carport</b>	<b>20 x 20</b>	<b>With built in cabinets</b>
<b>GUEST HOUSE</b>		<b>Over 100 years old and recently remodeled "workers cabin". 2 rooms: LR 13 x 13.5 and bunk room 13 x 9. Front porch.</b>

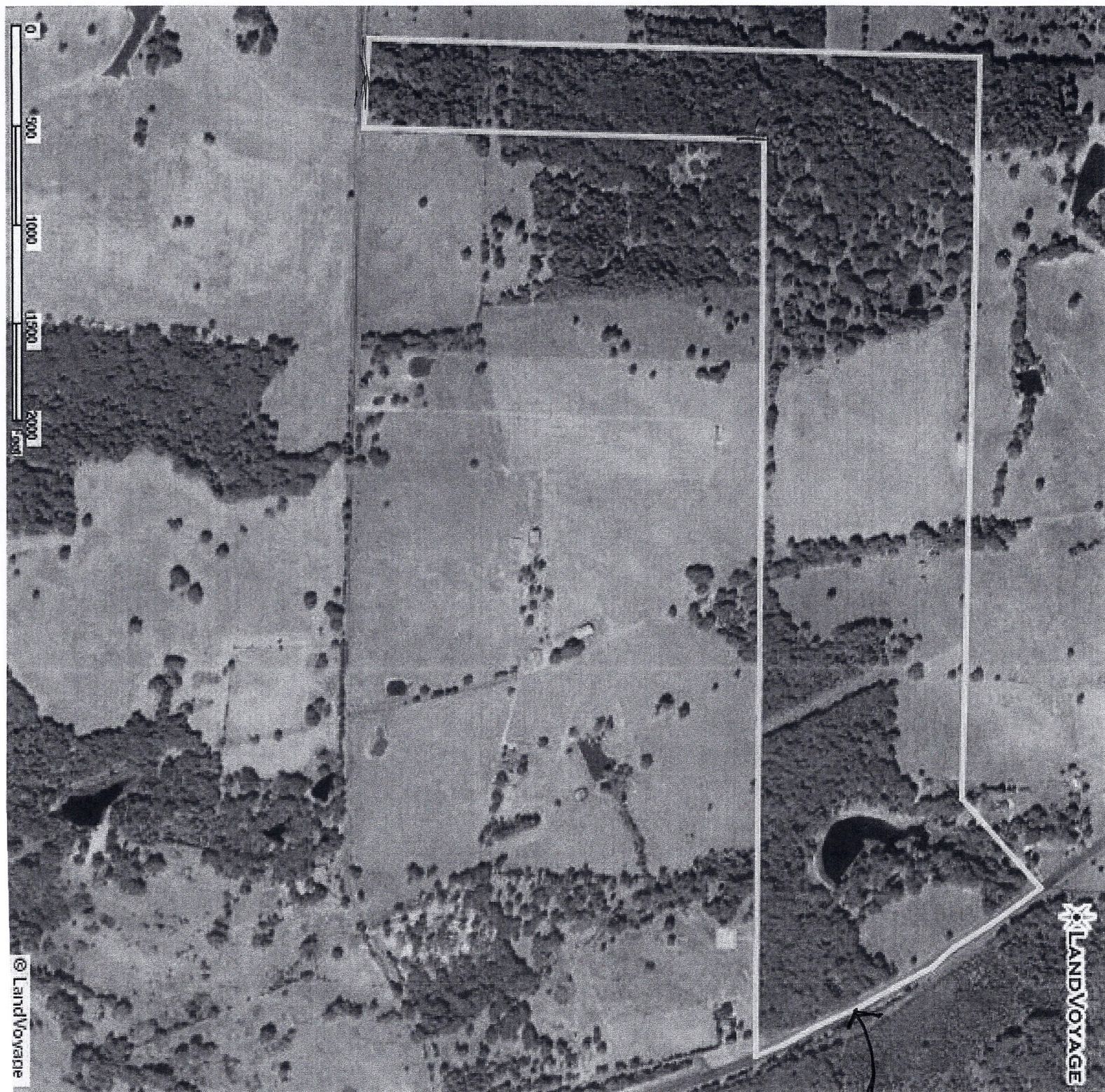
**Over 200 acres drain into this property to feed the 4 + acre stocked lake and overflows into woods and creek. This property is about 50% open and 50% woods for hunting, hiking, riding trails or just enjoying nature.**

**BARN:**

**8 stall barn with large alley. Tack and feed room. Each stall has its own fan, swing out feed trough. All have runs made from panels so they can be rearranged or moved. Two 3 acre traps with 3 stall loafing sheds. So much coastal, you'll founder your horses  
Stocks or stantions for medicining animals. 35 acre coastal hay field.**

**NOTE: This property could be divided. Ask listing agent for possibilities.**





- HWY 19