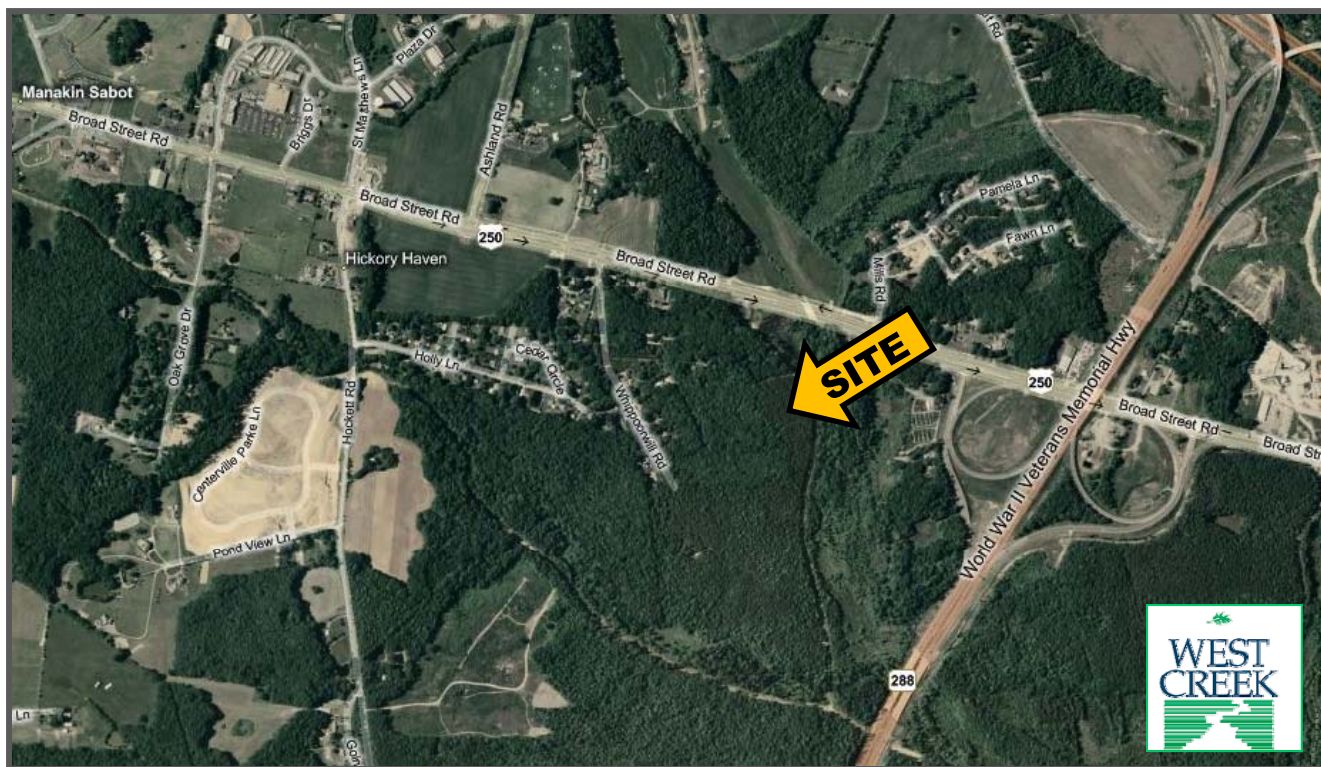


For Sale

Property for Development, Goochland County, VA



- FRONTAGE ON US 250/WEST BROAD STREET ROAD
- 60+/- ACRES
- CENTERVILLE VILLAGE FUTURE LAND USE – RETAIL COMMERCIAL
- IN TUCKAHOE CREEK SERVICE DISTRICT
- NEXT TO WEST CREEK CORPORATE CENTER

*Information Available on LoopNet, CoStar and CommonwealthLandVA.COM

For further information, please contact:

Joe Buhrman **804.433.1811**
JBuhrman@CommonwealthLandVA.com

Bill Barnett **804.433.1821**
BBarnett@CommonwealthLandVA.com



A Division of Commonwealth Commercial Partners, Inc.

7130 Glen Forest Drive • Suite 110 • Richmond, VA 23226
P.O. Box 71150 • Richmond, VA 23255 • Phone
804.346.4966 • Fax 804.346.5901
www.CommonwealthLandVA.com

Commonwealth Commercial Partners, Inc. represents the Owner of this property. Information contained within is deemed reliable, but is not guaranteed.