

Southern Cross Ranch

Pie Town, New Mexico



“WELCOME TO THE LAND OF GIANTS”

Introduction

"World-class" is no exaggeration when describing the exceptional trophy elk hunting on the renowned Southern Cross Ranch in west-central New Mexico. On the Southern Cross Ranch, geography, genetics and habitat have combined to create an entire ecosystem that produces some of the largest bull elk on the planet.



Dave Harrigan / Hunter Harrigan

(800)524-1818 / www.harriganland.com



The Southern Cross is indeed a "land of giants" well-known for amazing numbers of 350- to over 400-class bulls that have free access to its 47,309 acres (33,514 deeded). Simply put, the Southern Cross controls over 70 square miles of the finest trophy elk habitat anywhere.



The Southern Cross has been superbly managed for years to maintain its status as one of America's premier hunting destinations.



Dave Harrigan / Hunter Harrigan

(800)524-1818 / www.harriganland.com



Improvements

A spectacular 6,000 square-foot log lodge is the centerpiece of the ranch. With six bedrooms, five baths, and wraparound deck, the lodge treats guests luxuriously. A caretaker's house, corrals, barn and meat cooler completes the outstanding facilities on the ranch, all "ready-to-roll" for the next hunting season.





Elk Tags

Southern Cross Ranch has been allotted 49 bull elk tags and 14 cow elk tags for the 2009-2010 seasons.





Terrain / Water

Straddling both sides of the Continental Divide, the Southern Cross Ranch ranges in elevation from 7300 to 8200 feet, which makes it ideally situated for supporting many square miles of pinion pine and alligator juniper forest, interspersed with grassy meadows. Parts of the eastern portion of the ranch adjoin the Cibola National Forest. Much of the ranch's terrain is rolling, and a good network of ranch roads provides vehicular access throughout. With wildlife and livestock management in mind, dozens of water sources have been developed throughout the ranch, utilizing both wind and solar power.





Location / Price

The Southern Cross is best known for its elk hunting, but its superb mule deer and antelope hunting should not be overlooked, either. As a combination cattle/hunting ranch or a hunting resort alone, the potential for this spectacular piece of western New Mexico may be unmatched anywhere in the United States. With excellent year-round access, the "land of giants" is located only 2.5 hours from Albuquerque, 3.5 hours from Santa Fe, and 5 hours from Phoenix, Arizona.

\$25,000,000



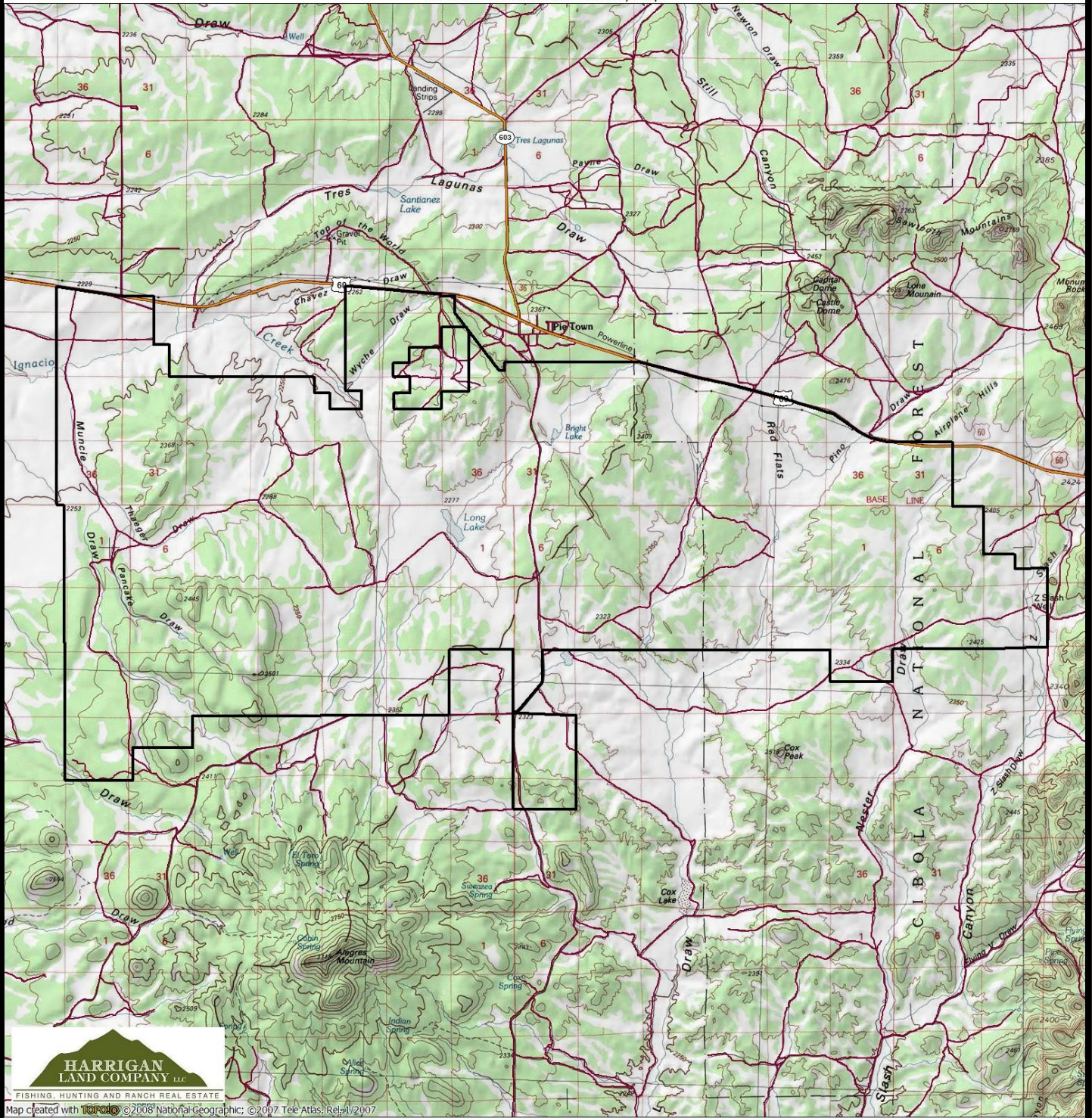
Dave Harrigan / Hunter Harrigan

(800)524-1818 / www.harriganland.com

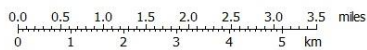
Trophy Room - Area Bulls



Southern Cross Ranch Boundary Map



Map created with 100-foot contours ©2008 National Geographic; ©2007 Tele Atlas; Rep'd/2007

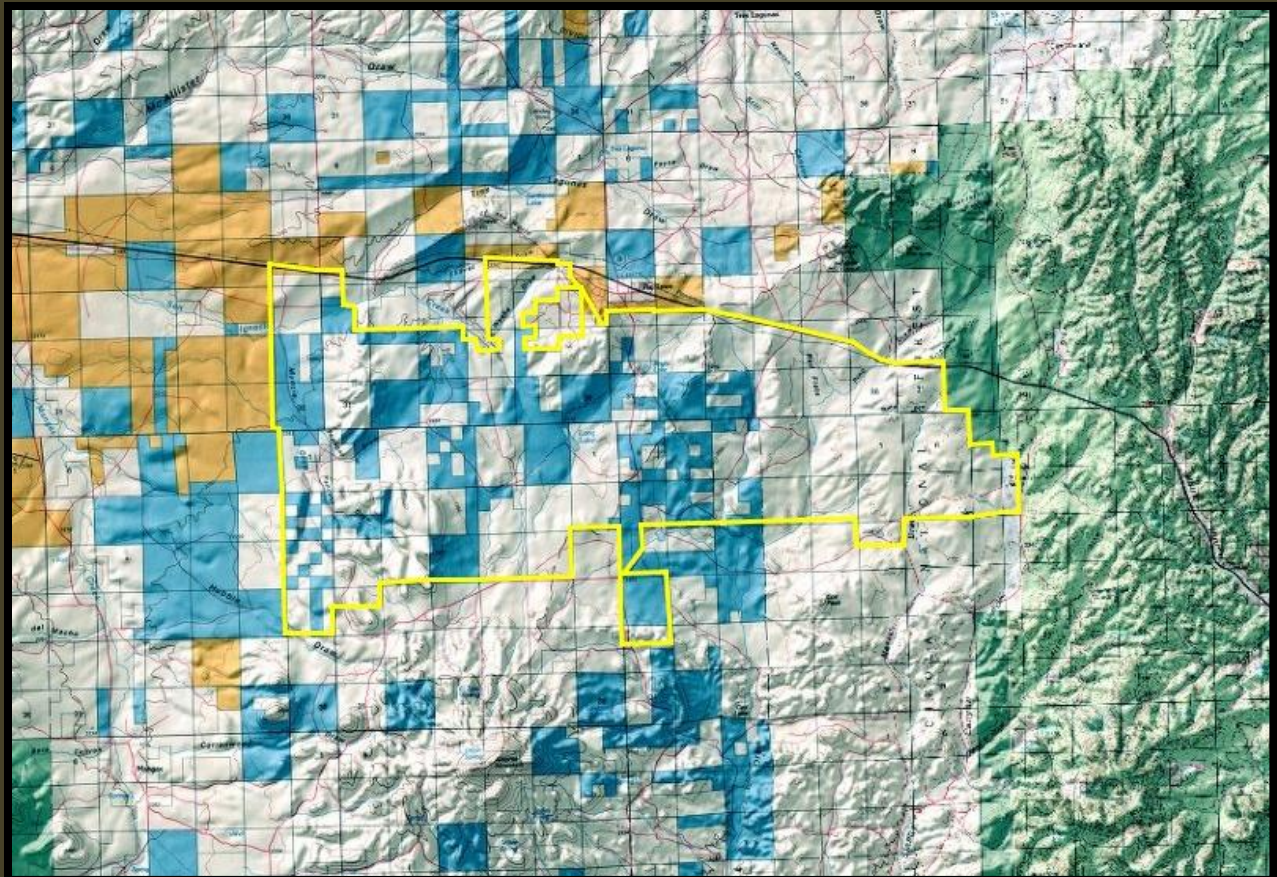
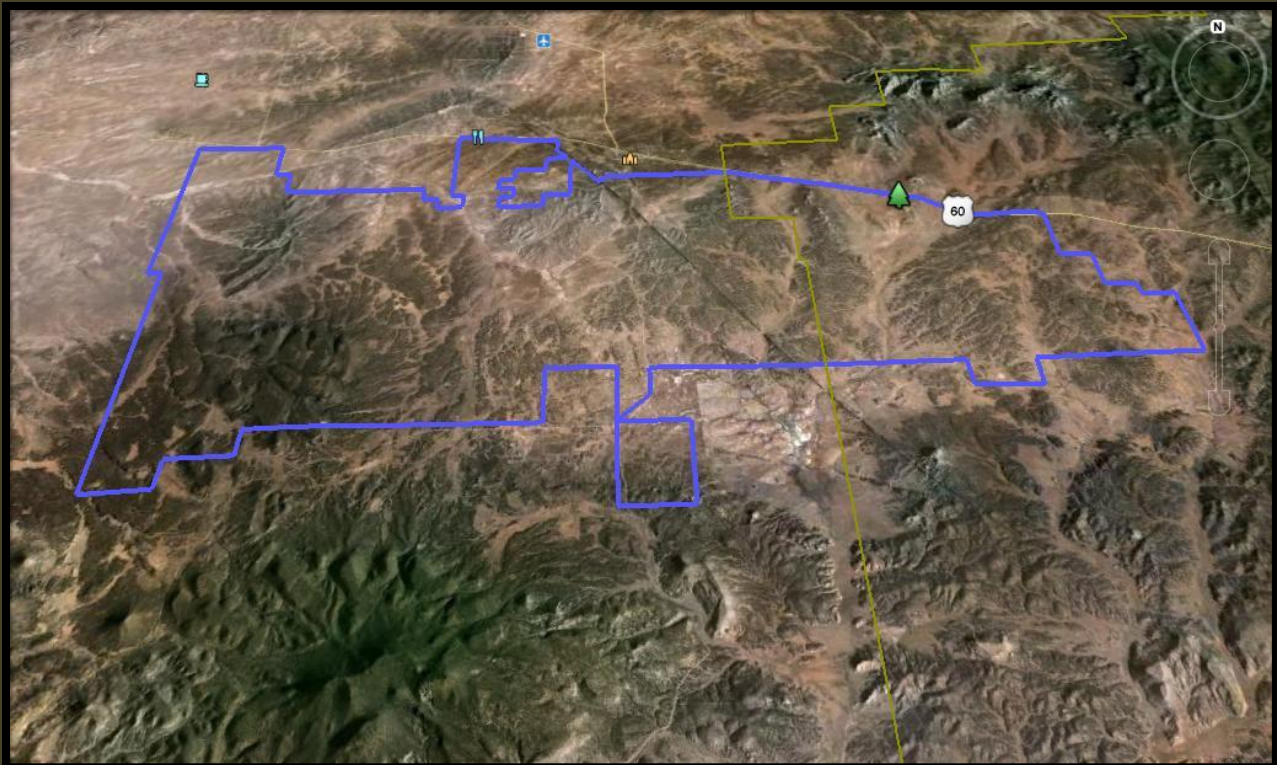


TN/MN
10°
06/10/10



Dave Harrigan / Hunter Harrigan

(800)524-1818 / www.harriganland.com



Dave Harrigan / Hunter Harrigan

(800)524-1818 / www.harriganland.com

