

# Davenport Grove

*25 +/- acres*

*Hamkins  
Valencia  
Ambersweet*

*Land · Commercial · Conservation · Land Management*  
5120 S. Lakeland Drive, Suite 3 · Lakeland, FL 33813  
Phone: 863-648-1528 · Toll Free: 1-877-518 LAND  
[www.saundersrealestate.com](http://www.saundersrealestate.com)



**COLDWELL  
BANKER  
COMMERCIAL**

**SAUNDERS  
REAL ESTATE**

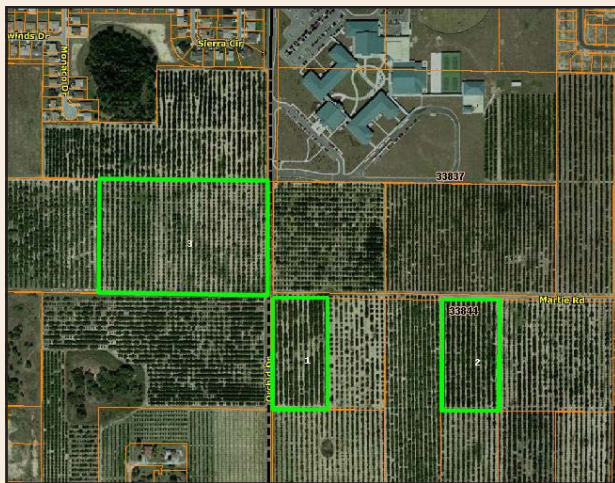


# Davenport Grove - 25 Acres

*Good quality grove surrounded by development! This tract is entitled with 3 dwelling units per acre with utilities to the site. Ridge Community High School is adjacent to the north-east. Lots of road frontage.*

**Size:** 25 +/- acres  
**Price:** \$450,000  
**Frontage:** 660 +/- ft. on Orchid Drive  
**Location:** Orchid Drive, Davenport; Polk County  
**Close Intersection:** Orchid Drive & South Blvd.  
**Use:** Citrus; Residential  
**Water:** Water purchased from neighbor  
**Irrigation:** Micro-jet  
**Parcel #:** 27-27-08-727500-020170  
 27-27-08-727500-020200  
 27-27-08-727500-040090

Variety	09/10 (boxes)	08/09 (boxes)
Valencias	7,360	7,768
Hamkins	500	1,072
Ambersweet	600	



**863-648-1528**

**www.saundersrealestate.com**

## Driving Directions:

- From US 27 & Hwy 547, go east to Orchid Dr.
- Go south on Orchid Drive to property.



While every attempt is made to provide as accurate information on this property offering as possible, COLDWELL BANKER COMMERCIAL SAUNDERS REAL ESTATE (CBCSRE) does not guarantee the accuracy thereof. Buyer shall rely entirely on their own information and inspection of property and records. © Copyright Coldwell Banker Commercial Saunders Real Estate, All Rights Reserved, Worldwide: All content inclusive of text, graphics, images, and logos is the property of CBCSRE. You may not copy this material by any means (including electronic copies), reproduce, duplicate, scan, modify, publish, transfer, use on your own website, distribute, or create a derivative work without receiving written permission from CBCSRE.

© 2010 Coldwell Real Estate Corporation. Coldwell Banker Commercial® is a registered trademark licensed to Coldwell Banker Real Estate Corporation. An Equal Opportunity Company. Each Office is Independently Owned And Operated.

033110A-DS/RD