

Bennett Groves • South Polk County

60.94 +/- acres

Land • Commercial • Conservation • Land Management
5120 S. Lakeland Drive, Suite 3 • Lakeland, FL 33813
Phone: 863-648-1528 • Toll Free: 1-877-518 LAND
www.saundersrealestate.com



COLDWELL
BANKER
COMMERCIAL

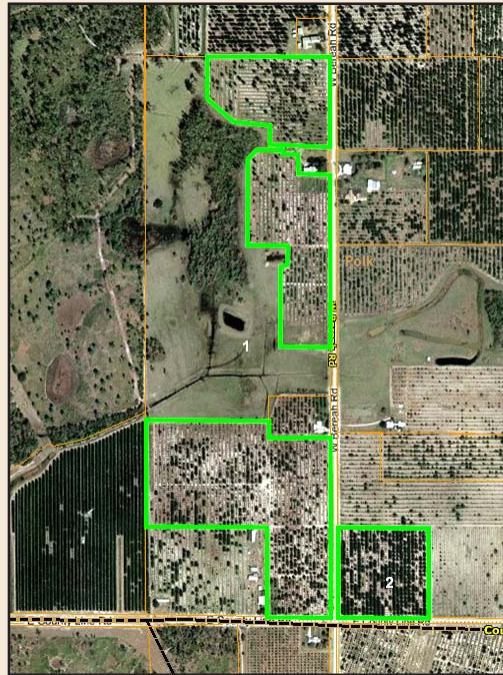
SAUNDERS
REAL ESTATE



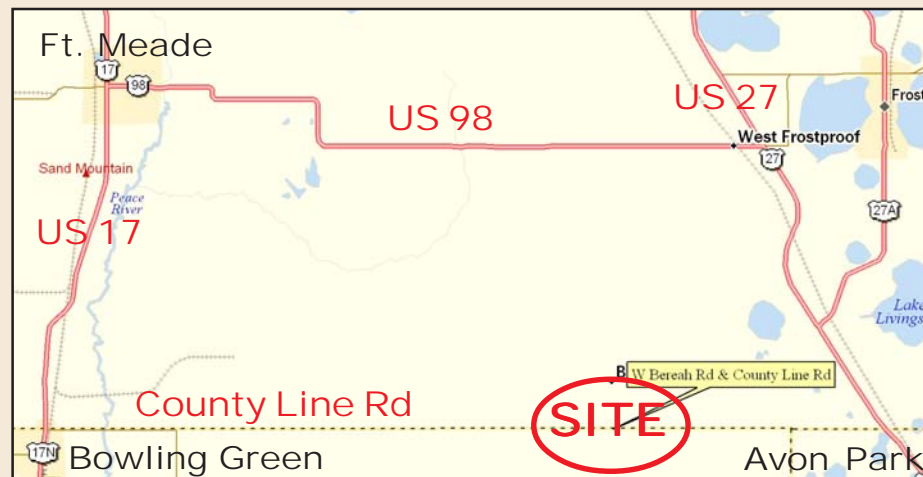
Bennett Groves, South Polk County - 60.94 +/- Acres

A 60 acre Hamlin and Valencia grove with 5-acre tract development potential.

Size: 60.94 +/- acres
Price: \$750,000
Frontage: 3,710 +/- ft. on West Bereah Road
1,092 +/- ft. on County Line Road
Location: West Bereah Rd/County Line Rd
Ft. Meade 33841
Close Intersection: West Bereah Rd & County Line Rd
Use: Ag/Grove
Water: 10" pump with microjets
Uplands: 99% uplands
Parcel #: 27 32 33 000000 042030
27 32 33 000000 034010
GPS (Google): 27 38 47.64 N
81 37 30.62 W



Variety	09/10	08/09	07/08
Hamkins & Mids	14,400	13,500	14,100
Valencia	not picked	1,000	1,000



Driving Directions:

- From Bowling Green take US 17 north to County Line Road.
- Go east on County Line Road for 12 miles.
- Property is at the intersection of West Bereah Road and County Line Road.

863-648-1528

www.saundersrealestate.com

While every attempt is made to provide as accurate information on this property offering as possible, COLDWELL BANKER COMMERCIAL SAUNDERS REAL ESTATE (CBCSRE) does not guarantee the accuracy thereof. Buyer shall rely entirely on their own information and inspection of property and records. © Copyright Coldwell Banker Commercial Saunders Real Estate, All Rights Reserved, Worldwide: All content inclusive of text, graphics, images, and logos is the property of CBCSRE. You may not copy this material by any means (including electronic copies), reproduce, duplicate, scan, modify, publish, transfer, use on your own website, distribute, or create a derivative work without receiving written permission from CBCSRE.

© 2010 Coldwell Real Estate Corporation. Coldwell Banker Commercial® is a registered trademark licensed to Coldwell Banker Real Estate Corporation. An Equal Opportunity Company. Each Office is Independently Owned And Operated.

022610A-JE/DH