

ALTERNATIVE INVESTMENT OPPORTUNITY OFFERED BY AFM REAL ESTATE

POPELARS TRACT
BLADEN COUNTY, NORTH CAROLINA
234 +/- ACRES
\$386,500.00

LOCATION: From Fayetteville, NC, take the Hwy. 210/Hwy. 53 exit off of I-95 (Exit 49). Turn east onto Hwy. 53/Hwy. 210, continue approximately 3 miles, and turn left onto Hwy. 210. Continue on Hwy. 210 approximately 18 miles to the intersection of Hwys. 210 and 242, and turn right onto Hwy. 242. Proceed approximately 3 miles on Hwy. 242 to FL McDaniel Road (SR 1329), and turn right. The property is on the left side of the road approximately 0.5 miles from Hwy. 242. The property is located approximately 1 hour from Fayetteville, NC.

DESCRIPTION: 234 +/- Acres of prime hunting land located in Bladen County, NC. This property consist of approximately 54 acres of two year old planted pines with the remainder of the acreage being mixed hardwood/pine stands. The property holds bear, deer, turkey, and numerous other small game. The planted pines have been cost shared with NCFS and must remain for an additional 8 years, in accordance with the NCFS cost share policies.

PROPERTY USE: This property provides excellent hunting and recreational opportunities.

CONTACT: Kirk Richardson NCBL #221869
P.O. Box 1470 • 3700 South Main Street • Hope Mills, NC 28348

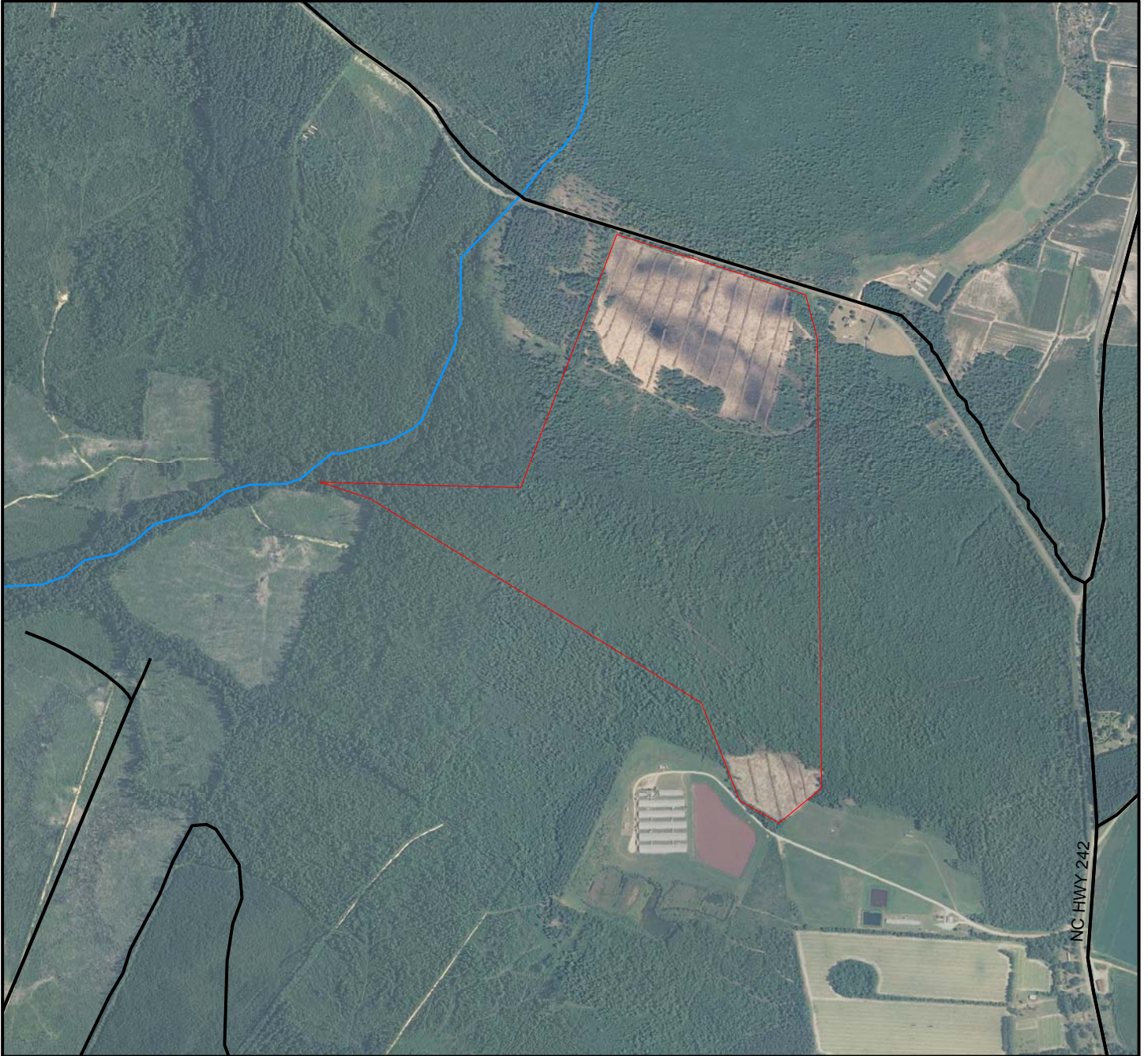
Office: 910-426-2734
Mobile: 910-309-6790
Fax: 910-424-0931
E-mail: kirk.richardson@amforem.biz

All information is assumed to be accurate and substantially correct but no assumptions of liability is intended. Neither the seller nor the agent or representatives warrant the completeness or accuracy of the information contained in this prospectus. Seller does not guarantee any timber volume, values, acreages (total, woodland/cropland, stand or otherwise), tree ages or the condition and/or function of any improvements, including but not limited to any buildings, machinery, wells, equipment, livestock and ponds. No representatives or warranties are expressed or implied as to the property, its condition, boundaries or logging feasibility. Prospective buyers should satisfy themselves as to the accuracy of this information.

American Forest Management (AFM) will not be liable for any fees or commissions to any real estate salesman, broker, dealer or agent in connection with this offering unless arrangements have been made with the listing salesperson or broker and his/her Broker-In-Charge. Arrangements made will be in writing only on forms supplied and approved by AFM. Prospective buyers or sellers, as the case may be, must be registered with AFM in writing for AFM's approval prior to discussions relating to payment of fees or commissions. Possession of AFM's marketing material or sales information or the showing of the sale property without prior permission from the listing salesperson or broker does not obligate AFM in any way to the payment of fees or commission to individuals not employed by or a contractor associated with AFM.



Popelars Tract - 234 +/- Acres



Legend

- Roads
- Streams
- Railroads
- Utilities
- Subject Property



0 1,320 Feet
1 inch equals 1,320 feet

Popelars Tract
Bladen County, NC
Located on FL McDaniel Road



Broker does not guarantee property lines or title to the property.
Buyer should conduct a routine title exam.