



340 Tower Park Drive P.O. Box 2396
Waterloo, IA 50704-2396
Ph: 319-234-1949 • Fax: 319-234-2060

WE ARE PLEASED TO PRESENT

60 Acres m/
Fayette County, Iowa

OWNER: Tom Brimeyer Farms, LLC

LOCATION: Approximately 3 miles northwest of Wadena.

LEGAL: To be surveyed out of NW 1/4 NW 1/4 Section 20 and SW 1/4 SW 1/4 Section 17, Township 93 North, Range 7 West of the 5th P.M., Fayette County, IA.

PRICE: \$186,000.00 - \$3,100/A

RE TAXES: 2008-2009, payable 2009-2010, \$809.16 estimated net taxes on 60 acres south of road.

POSSESSION: Negotiable

SCHOOL DIST: Valley Community

FSA INFO: #1140, Part of Tract #2738 (Estimated)

| Crop | Base Acres | Direct Payment Yield | Counter Cyclical Payment Yield |
|------|------------|----------------------|--------------------------------|
| Corn | 27.1 est. | 119 | 119 |
| Oats | 4.6 est. | 60 | 60 |

Total Cropland 52.8 (Includes 3.6 acres CRP)

CRP: 3.6 acres contour buffers with annual payment of \$506.00 that expires 9/30/2019.

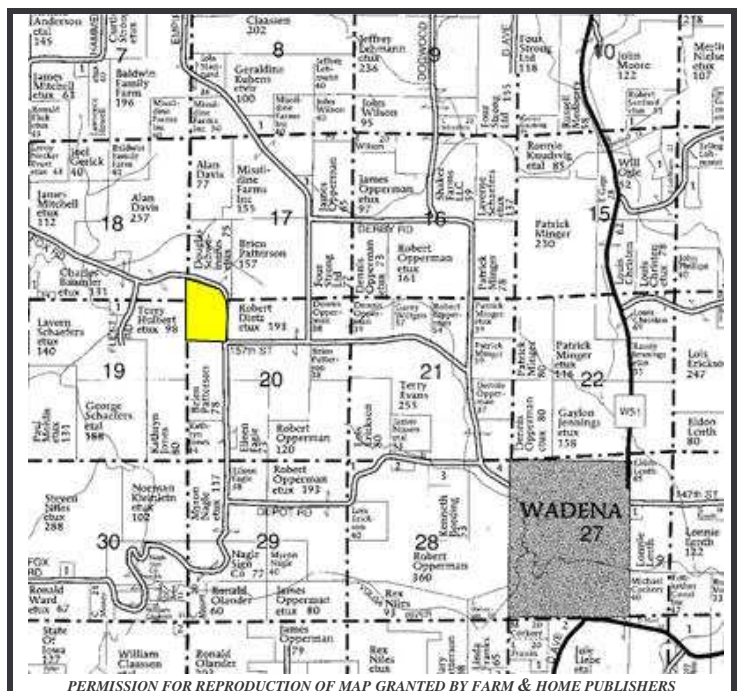
SOILS: Soil map included.

AVERAGE CSR: 42.4 per Agri Data

BUILDINGS: None

WELL: None

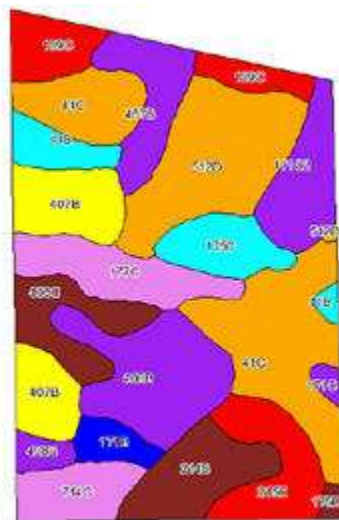
HIGHLY ERODIBLE CLASSIFICATION: All cropland is classified as Highly Erodible Land (HEL).



COMMENTS: CRP includes 7,000 trees planted.

The information gathered for this brochure is from sources deemed reliable, but cannot be guaranteed by Hertz Farm Management, Inc. or its staff.

Farm# 1140 Tract # 2738
Sec 17 Illyria



State: Iowa
 County: Fayette
 Location: 020-093N-007W
 Township: Illyria
 Acres: 60.2
 Date: 9/4/2009



Maps provided by:

 iAgriData, Inc 2008
 www.AgrDataInc.com

| Code | Soil Description | Acres | Percent of field | CSR Legend | Non-Irr Class | Irr Class | CSR | Corn | Soybeans |
|------------------|--|-------|------------------|------------|---------------|-----------|------|-------|----------|
| 41C | Sparta loamy fine sand, 5 to 9 percent slopes | 9.7 | 16.4% | | IV/s | | 25 | 120 | 32 |
| 512D | Marlean loam, 5 to 14 percent slopes | 7.2 | 11.9% | | V/le | | 22 | 116 | 31 |
| 408B | Olin fine sandy loam, 2 to 5 percent slopes | 6.5 | 10.8% | | IIe | | 67 | 176 | 48 |
| 407B | Schley loam, 1 to 4 percent slopes | 5 | 8.2% | | IIw | | 72 | 183 | 49 |
| 177C | Saude loam, 5 to 9 percent slopes | 3.7 | 6.1% | | IIIe | | 39 | 139 | 38 |
| 214B | Rockton loam, 20 to 30 inches to limestone, 2 to 5 percent slopes | 3.6 | 6.0% | | IIe | | 58 | 164 | 44 |
| 215E | Goss loam, 9 to 18 percent slopes | 3.5 | 5.8% | | V/s | | 5 | 93 | 25 |
| 171C2 | Bassett loam, 5 to 9 percent slopes, moderately eroded | 3.2 | 5.3% | | IIIe | | 63 | 171 | 46 |
| 109C | Backbone fine sandy loam, 5 to 9 percent slopes | 3.2 | 5.3% | | IV/s | | 15 | 106 | 29 |
| 467B | Otter-Huntsville silt loams, 2 to 5 percent slopes | 3 | 4.9% | | IIw | | 68 | 178 | 48 |
| 408C | Olin fine sandy loam, 5 to 9 percent slopes | 3 | 5.0% | | IIIe | | 52 | 156 | 42 |
| 714C | Winneshiek loam, 20 to 30 inches to limestone, 5 to 9 percent slopes | 2.5 | 4.1% | | IIIe | | 31 | 126 | 35 |
| 175C | Dickinson fine sandy loam, 5 to 9 percent slopes | 2.4 | 4.1% | | IIIe | | 40 | 140 | 38 |
| 41B | Sparta loamy fine sand, 2 to 5 percent slopes | 1.8 | 3.0% | | IV/s | IIe | 40 | 140 | 38 |
| 171B | Bassett loam, 2 to 5 percent slopes | 1.2 | 2.0% | | IIe | | 80 | 194 | 52 |
| 171C | Bassett loam, 5 to 9 percent slopes | 0.4 | 0.6% | | IIIe | | 65 | 174 | 47 |
| 175B | Dickinson fine sandy loam, 2 to 5 percent slopes | 0.3 | 0.5% | | IIIe | | 55 | 160 | 43 |
| Weighted Average | | | | | | | 42.4 | 143.3 | 38.6 |

The information gathered for this brochure is from sources deemed reliable, but cannot be guaranteed by Hertz Farm Management, Inc. or its staff.