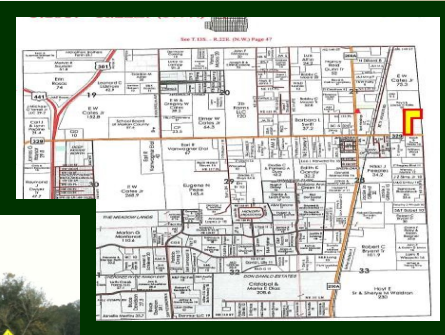


14.53 acres on Hwy 329

Sparr, FL

- **UNBELIEVABLE PRICE ... ONLY \$7,999 / ac!!!**
- Beautiful acreage with GREAT LOCATION (minutes from town)
- ALL HIGH & DRY with Paved Road Frontage on Hwy 329
- Cleared with scattered oaks
- Located just 1/4 mile E of Jax Rd
- Marion County Tax Parcel ID # 07855-001-00
- Owner financing available (15% Down, 8.9%, Pmt = \$1,029)
- Don't miss this opportunity Call today for more info!



\$116,225

www.mcbrideland.com

 **McBRIDE**
LAND & DEVELOPMENT CO.
Licensed Real Estate Broker

Phone: (352) 401-3755

Fax: (352) 401-3757

Aerial



Flood Plain



Plat Map

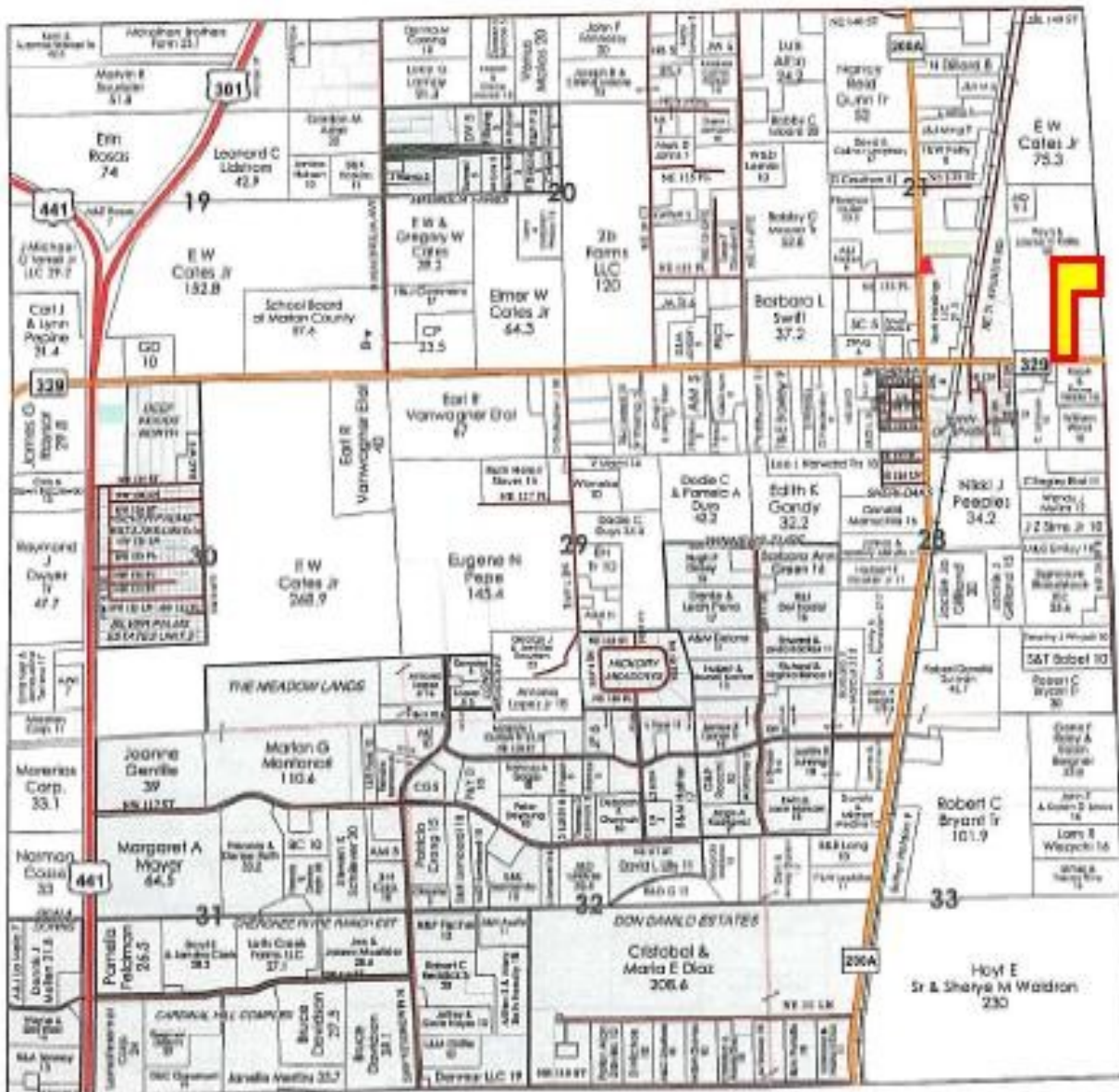
14.53acres - Hwy 329

T.13S. - R.22E. (S.W.)



(S.W.)

See T.13S. - R.22E. (N.W.) Page 47



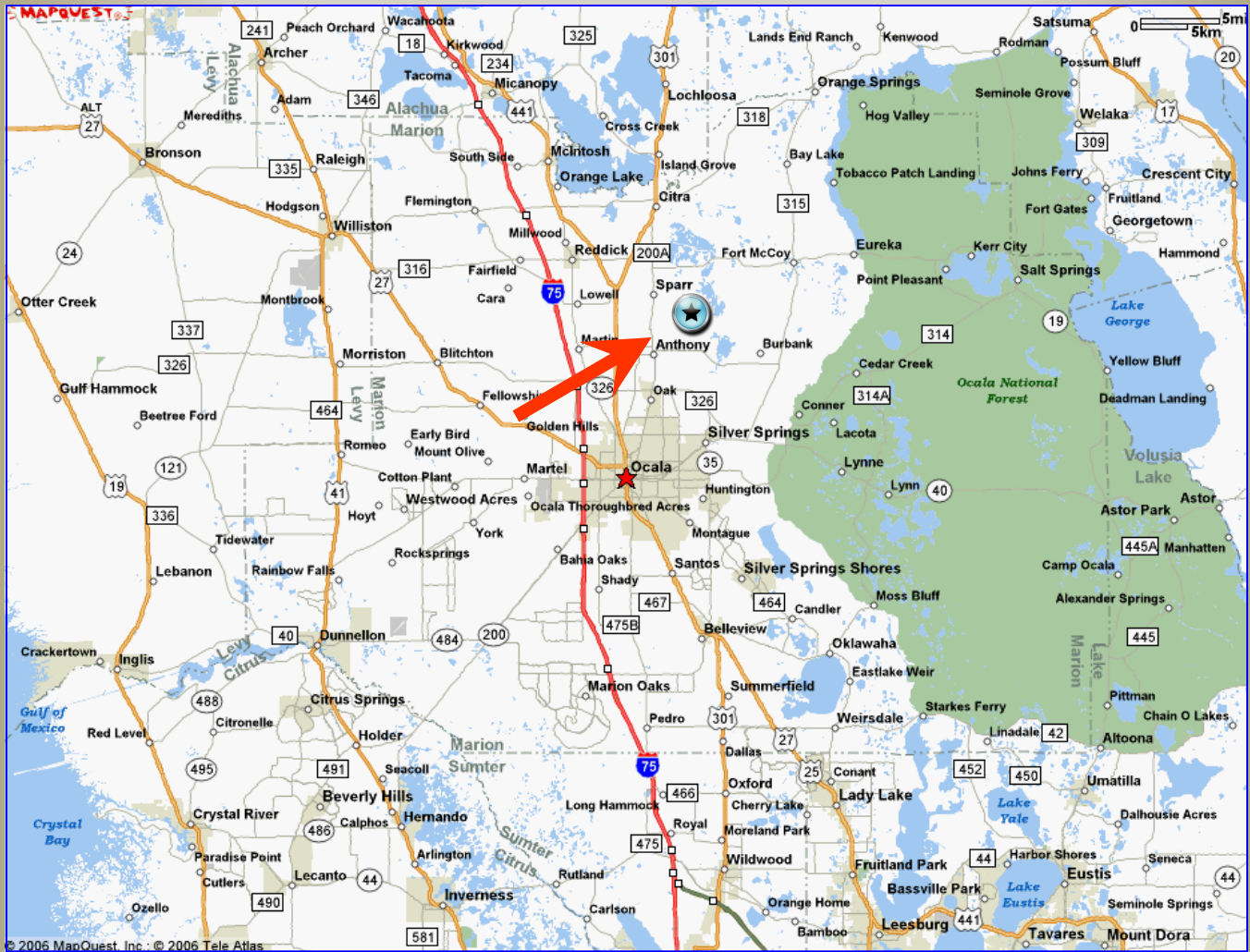
See T.13S. - R.22E. (S.E.) Page 46

See T.13S. - R.22E. (S.E.) Page 50

See T.13S. - R.22E. (N.W.) Page 75

Directions

14.53 acres - Hwy 329



From Ocala:

Take Jacksonville Road N to Hwy 329, make right (heading East), property located approximately $\frac{1}{4}$ mile on left (north side of road).