



**340 Tower Park Drive P.O. Box 2396
Waterloo, IA 50704-2396
Ph: 319-234-1949 • Fax: 319-234-2060**

WE ARE PLEASED TO PRESENT

**54 Acres m/l
Fayette County, Iowa**

OWNER: Tom Brimeyer Farms, LLC

LOCATION: Approximately 3 miles northwest of Wadena.

LEGAL: To be surveyed out of W 1/2 of the SW 1/4 of Section 17, Township 93 North, Range 7 West of the 5th P.M., Fayette County, IA.

PRICE/TERMS: \$135,000.00 - \$2,500/A

RE TAXES: 2008-2009, payable 2009-2010, \$582.84 estimated net taxes on 54 acres.

POSSESSION: Negotiable

SCHOOL DIST: Valley Community

FSA INFO: # Part of Tract # (Estimated)

Crop	Base Acres	Direct Payment Yield	Counter Cyclical Payment Yield
Corn	7.5 (est)	119	119
Oats	1.2 (est)	60	60

Total Cropland 13.4

CRP:

SOILS: Soil map included.

AVERAGE CSR: 49.8 per Agri Data

BUILDINGS: None

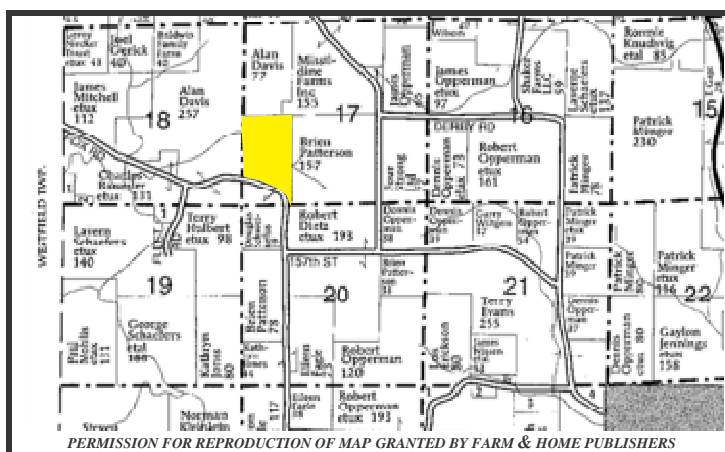
WELL: None

HIGHLY ERODIBLE CLASSIFICATION:

6.8 acres classified as non-highly erodible land (NHEL)

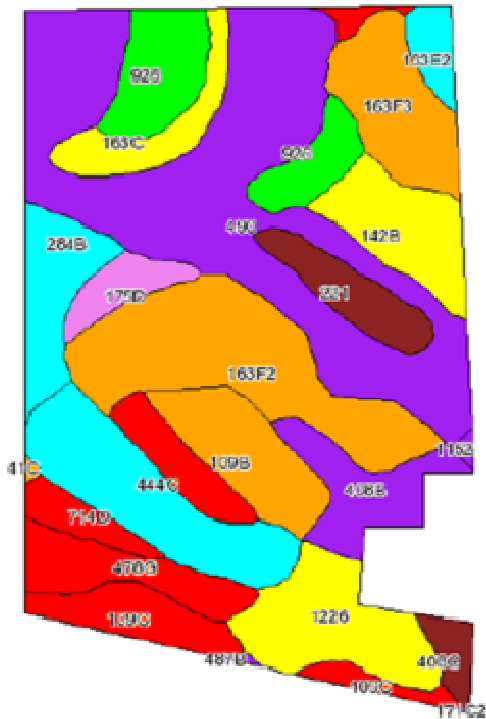
6.6 acres classified as high erodible land (HEL)

COMMENTS: 7,000 trees planted in the spring of 2008. Property has a stream and is just 2 miles from Volga State Park.



The information gathered for this brochure is from sources deemed reliable, but cannot be guaranteed by Hertz Farm Management, Inc. or its staff.

Aerial and Soil Maps



State: Iowa
County: Fayette
Location: 017-093N-007W
Township: Illyria
Acres: 54.9
Date: 9/4/2009



Code	Soil Description	Acres	Percent of field	CSR Legend	Non-IR Class	CSR	Com	Soybeans
490	Canebrake silt loam, 0 to 2 percent slopes	13.4	24.6%		IIIe	68	179	48
163F2	Fayette silt loam, 18 to 25 percent slopes, moderately eroded	6.2	11.2%		V/IIe	28	124	33
444C	Jacobs silt loam, 5 to 9 percent slopes	4.1	7.5%		IIIe	45	147	40
122B	Lawler silt loam, 34 to 40 inches to sand and gravel, 0 to 2 percent slopes	3.4	6.1%		IIIe	71	183	50
826	Canebrake silt loam, 0 to 2 percent slopes	3.2	5.9%		I	93	212	57
163F3	Fayette silt loam, 18 to 25 percent slopes, severely eroded	2.9	5.3%		V/IIe	25	120	32
109B	Backbone fine sandy loam, 2 to 5 percent slopes	2.6	4.7%		F/IIe	25	120	32
142B	Chaseburg silt loam, 2 to 5 percent slopes	2.5	4.5%		IIIe	73	185	50
479C	Rock outcrop-hardness complex, 25 to 60 percent slopes	2.2	4.1%		V/IIIe	5	93	25
109C	Backbone fine sandy loam, 5 to 9 percent slopes	2.2	4.0%		F/IIe	15	106	29
384B	Fayette sandy loam, 2 to 5 percent slopes	2.1	3.8%		IIIe	45	147	40
408B	On fine sandy loam, 2 to 5 percent slopes	2.1	3.9%		IIIe	67	176	46
221	Plains muck, 1 to 4 percent slopes	1.8	2.9%		IIIe	50	154	42
163C	Fayette silt loam, 5 to 9 percent slopes	1.6	2.9%		IIIe	70	181	49
499F	Hardness silt loam, 14 to 25 percent slopes	1.3	2.3%		V/IIIe	5	93	25
175C	Dickinson fine sandy loam, 9 to 14 percent slopes	1	1.8%		F/IIe	30	127	34
714D	Winnebago loam, 20 to 30 inches to limestone, 9 to 14 percent slopes	0.9	1.6%		F/IIe	18	110	30
163E2	Fayette silt loam, 14 to 18 percent slopes, moderately eroded	0.8	1.4%		F/IIe	48	151	41
408C	On fine sandy loam, 5 to 9 percent slopes	0.6	1.1%		IIIe	52	156	42
487B	Oter Huntville silt loam, 2 to 5 percent slopes	0.1	0.1%		IIIe	68	178	48
1152	Marshall clay loam, 0 to 2 percent slopes	0.1	0.2%		IIIe	67	176	46
		Weighted Average				49.8	153.5	41.4

The information gathered for this brochure is from sources deemed reliable, but cannot be guaranteed by Hertz Farm Management, Inc. or its staff.