

PLC Ranch

Catron County, New Mexico



“One of the best elk places in the world”- Wayne Carlton

Located in the midst of an ecosystem renowned for producing massive elk, the PLC Ranch has been called by Wayne Carlton "one of the best elk places in the world." 400-class bull elk range on more than 30 square miles (19,226 total acres, 14,858 deeded acres), fed on a rich diet of native high-protein grasses and watered by eight wells.



The New Mexico Department of Game and Fish has designated the area for long-term trophy management and restricts hunting to bow and muzzleloader only. The PLC Ranch receives 15 landowner bull tags annually, and its hunters often see the largest elk of their lives. Trophy elk hunting and cattle ranches surround the PLC Ranch on three sides, and Cibola National Forest borders on the east.





Situated in the pristine rolling highlands of northern Catron County at 7700 to 8200 feet, the PLC Ranch is mostly woodland comprised of a mix of pinion pine, alligator juniper and ponderosa pine.

Vigorous herds of elk, mule deer and pronghorn are native to the property's hills, meadows and draws, and the ranch can also support cattle if desired.





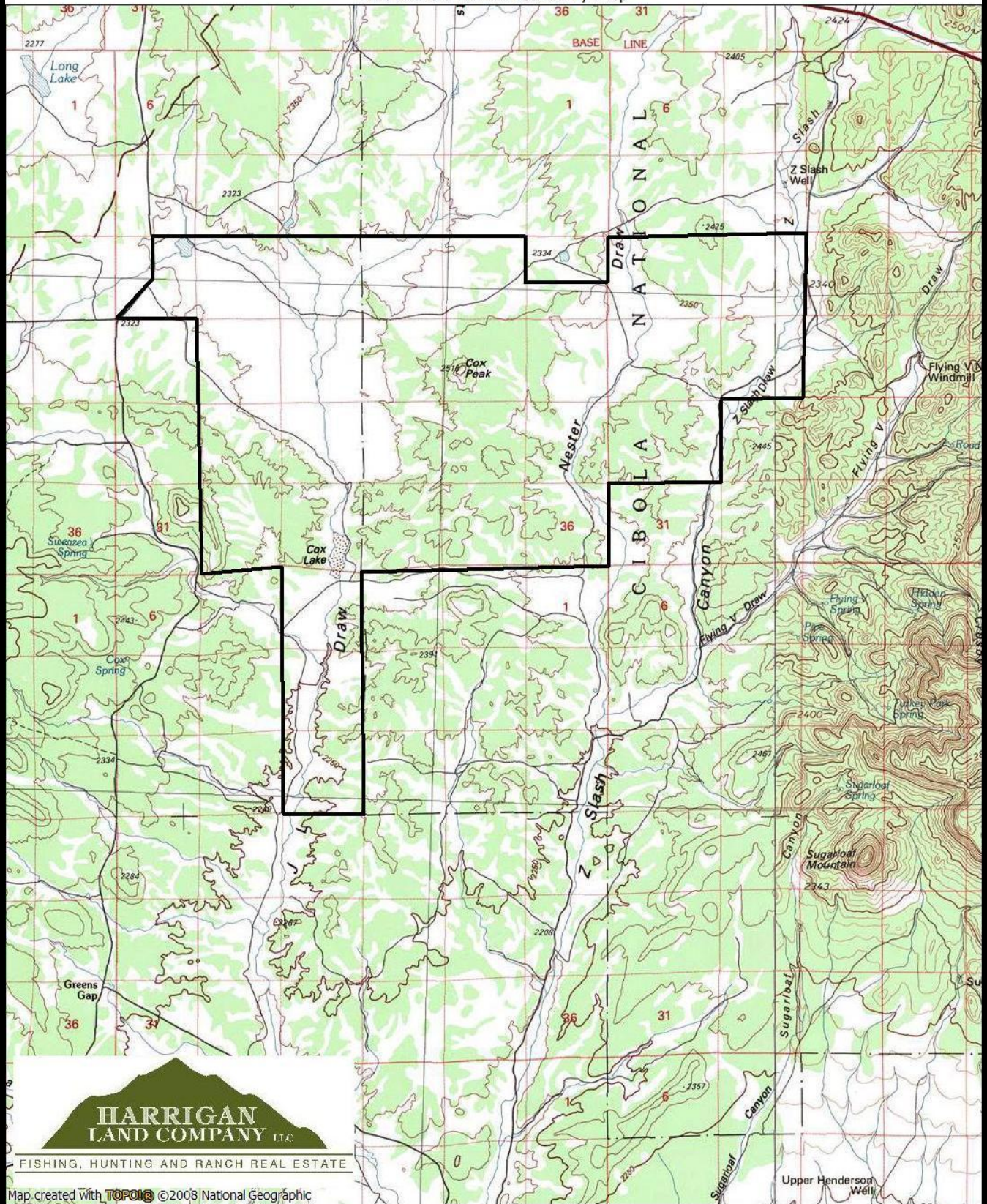
This magnificent hunting retreat has a relatively mild climate, year-round access, power and telephone available. Albuquerque is only 2.5 hours away; Santa Fe, 3.5 hours, both via excellent roads.

\$8,995,000

Trophy Room

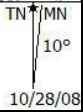
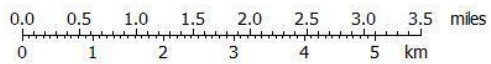


PLC Ranch: Ranch Boundary Map

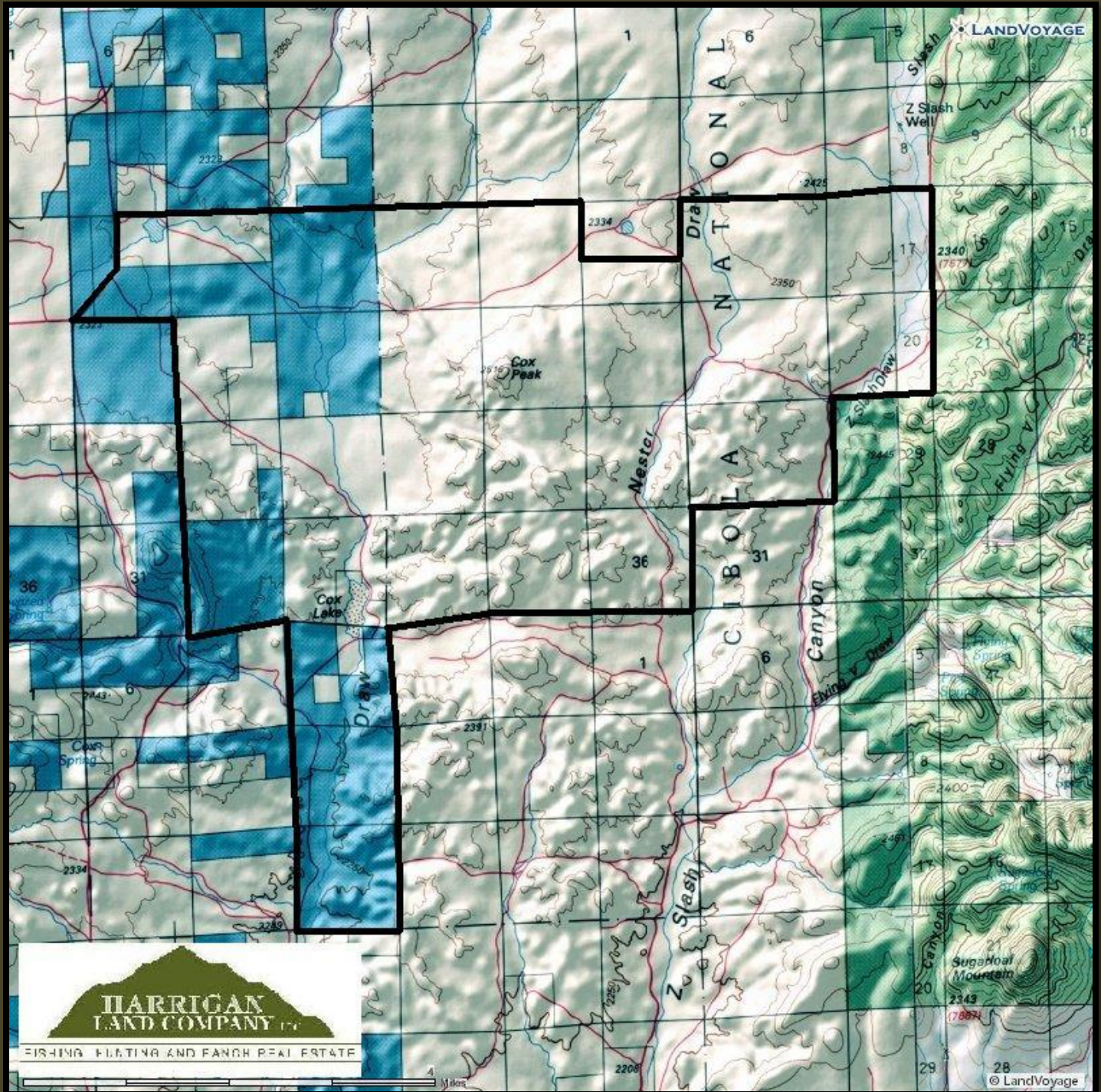


FISHING, HUNTING AND RANCH REAL ESTATE

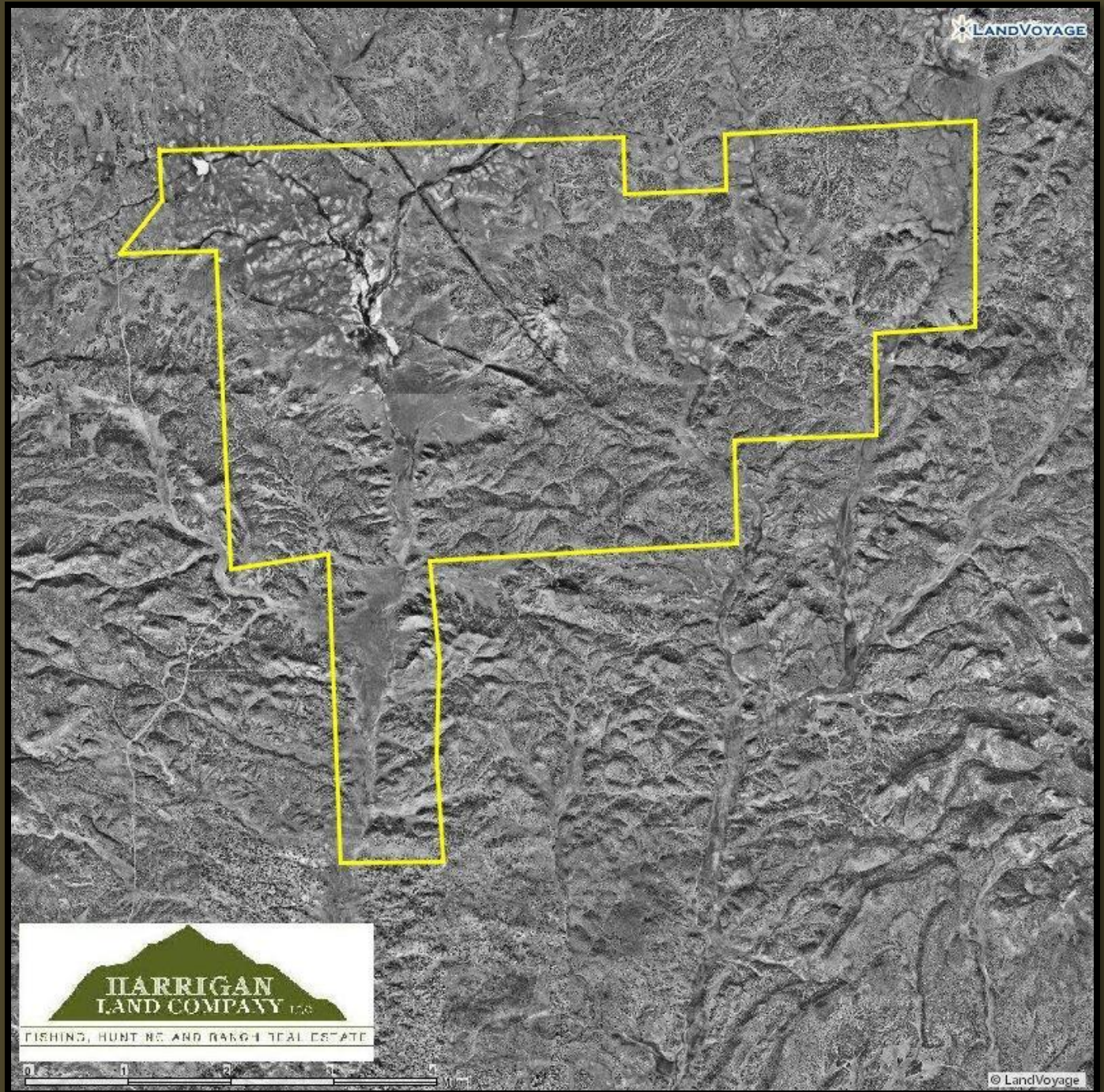
Map created with **TOPO10** © 2008 National Geographic



PLC Ranch BLM Map



PLC Ranch Aerial Map



PLC Ranch Location Map



01/15/09