

# NODAWAY COUNTY FARM LAND

## 47 ACRES M/L

### \$3200 AC



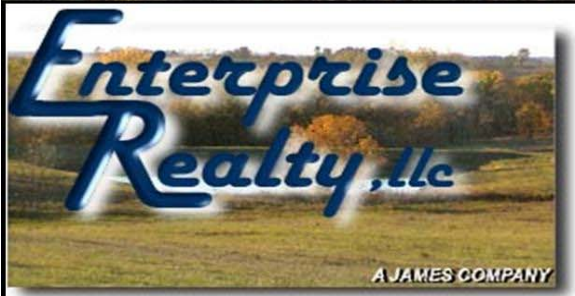
Taxes: \$162.35

**Location:** From Ravenwood, Mo. - West on 136 - 2.5 miles - turn left at State Hwy. MM - go 1.0 Miles on State Hwy MM - farm lays on East side of road.

**This farm has 40.3 acres tillable - one pond - good fences - well fertilized pasture—**  
Est. Income ——— 40 x \$150 = \$6000

**This is an excellent building site - Rural water and electricity accessible, graveled entry way**

**School District:** Northeast Nodaway  
**Community site within 5 miles - Maryville, Ravenwood, & Conception Jct.**



**Enterprise Realty**  
**121 E. 4th St.**  
**Maryville, MO 64468**  
**Office: (660) 582-7160**  
**[www.entrealty.com](http://www.entrealty.com)**

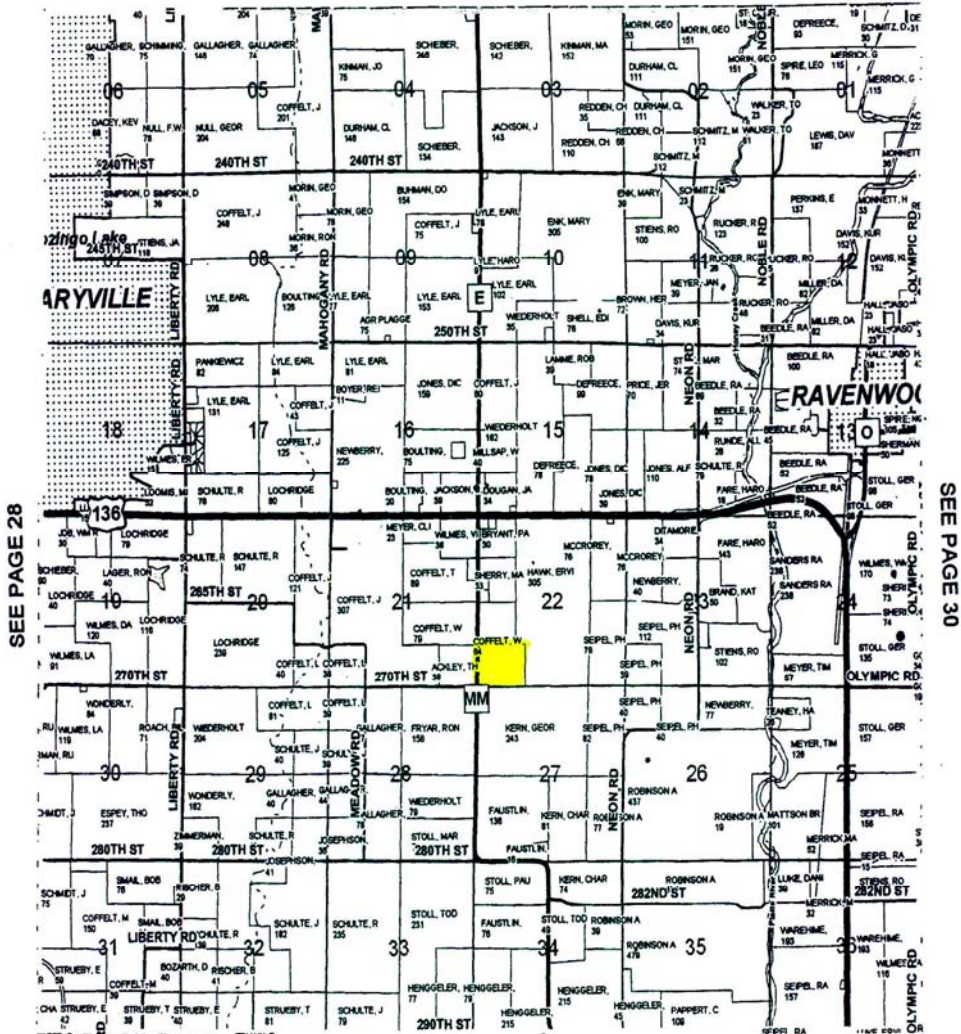


# ENTERPRISE REALTY LLC AND AUCTION A JAMES COMPANY

Selling the five State Area  
yard by yard – acre by acre!!!

## T64NR34W

SEE PAGE 23



SEE PAGE 35

SEE PAGE 30





United States Department of Agriculture  
Farm Service Agency

Grid: 1:7,920

**Nodaway County**

Farm ~~7485~~ 7188  
Tract 9728  
S22-T64-R34

July 25, 2008

fsa\_gis\_layers\SDE\wet\_p\_m0147  
not other values  
Wetland Determination Identifiers  
● Restricted Use  
▼ Limited Restrictions  
■ Exempt from Conservation Compliance Provisions



Disclaimer: Wetland identifiers do not represent the size, shape or specific determination of the area. Refer to your original determination (CPA-026 and attached maps) for exact wetland boundaries and determinations, or contact NRCS.