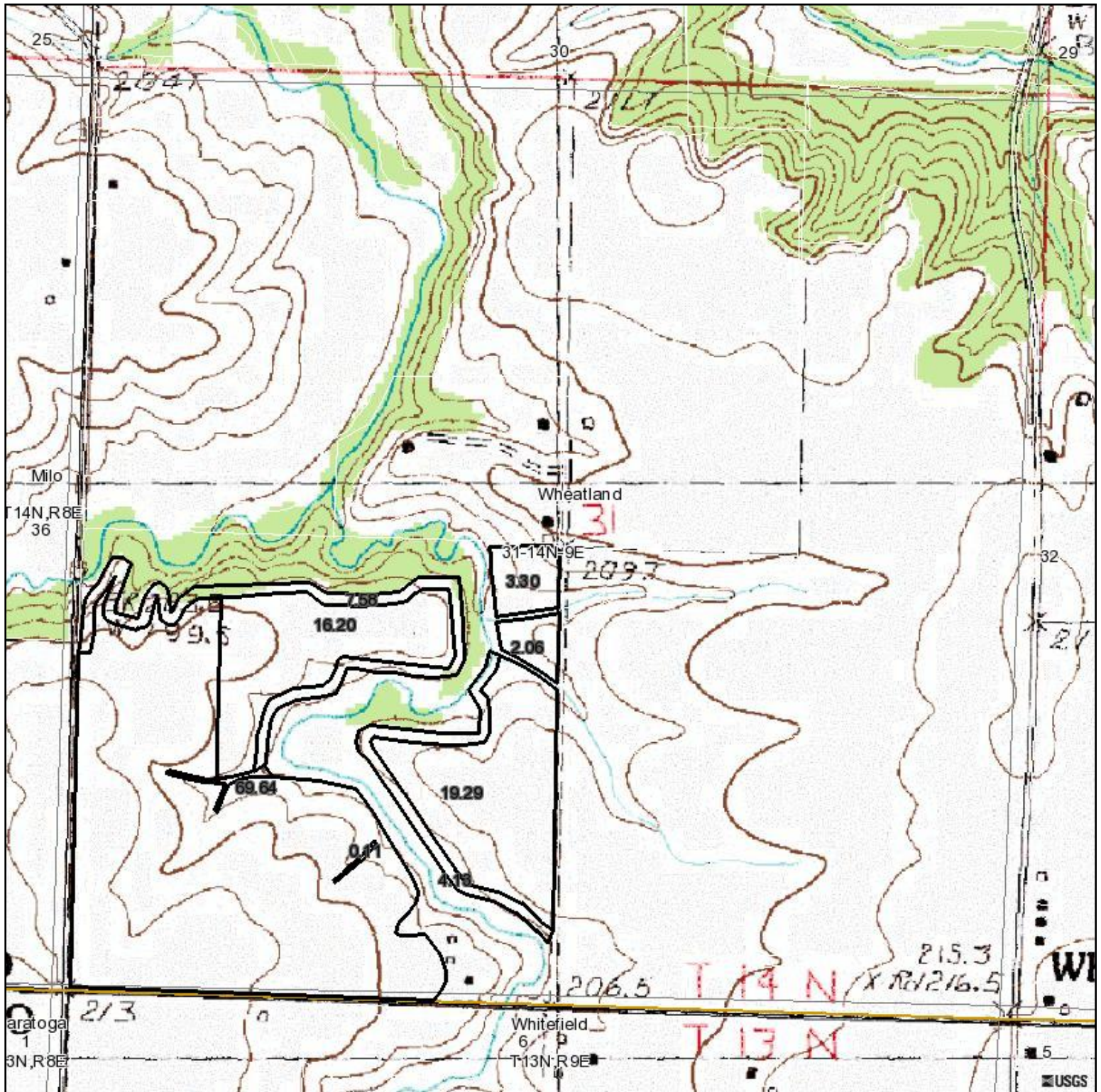


# Topography Map



Capital  
Agricultural  
Property  
Services, Inc.

Maps provided by:



©AgriData, Inc. 2009

[www.AgriDataInc.com](http://www.AgriDataInc.com)

**31-14N-9E**  
**Bureau County**  
**Illinois**

map center: 41° 9' 20.85, 89° 30' 53.52

scale: 10817



5/13/2009

Field borders provided by Farm Service Agency as of 5/23/2008. Aerial photography provided by Aerial Photography Field Office. PLSS provided