

# 211.3 ACRES +/- SURRY COUNTY, VIRGINIA

---

ASKING PRICE - \$548,300



REPRESENTED BY:

G. EDMOND MASSIE, IV  
ALC, CCIM, MBA

WILLIAM G. GRANT  
ALC, VLS

JEFFREY S. HUFF  
REALTOR®, FORESTER

# TABLE OF CONTENTS

---

- I. PROPERTY DESCRIPTION
- II. PHOTOGRAPHS
- III. AERIAL PHOTO
- IV. TOPOGRAPHIC MAP
- V. LOCATION MAP
- VI. FLYER

# PROPERTY DESCRIPTION

---

The subject property is shown on Surry County Tax Map records as parcel number 67-2, 67-3, 67-3A, 67-3F. According to the tax records the property contains a total of 211.316 acres. A review of the Surry County Tax Records indicates the following:

<u>Tax Map Number</u>	<u>Acreage</u>
67-2	106.1
67-3	50.905
67-3A	29.931
<u>67-3F</u>	<u>24.380</u>
TOTAL:	211.316

The subject property is currently zoned A-R (Agricultural-Residential). There are approximately 1,115' of road frontage on both sides of Route 460 and 3,530' on both sides of Route 639 (Warren's Quarter Rd).

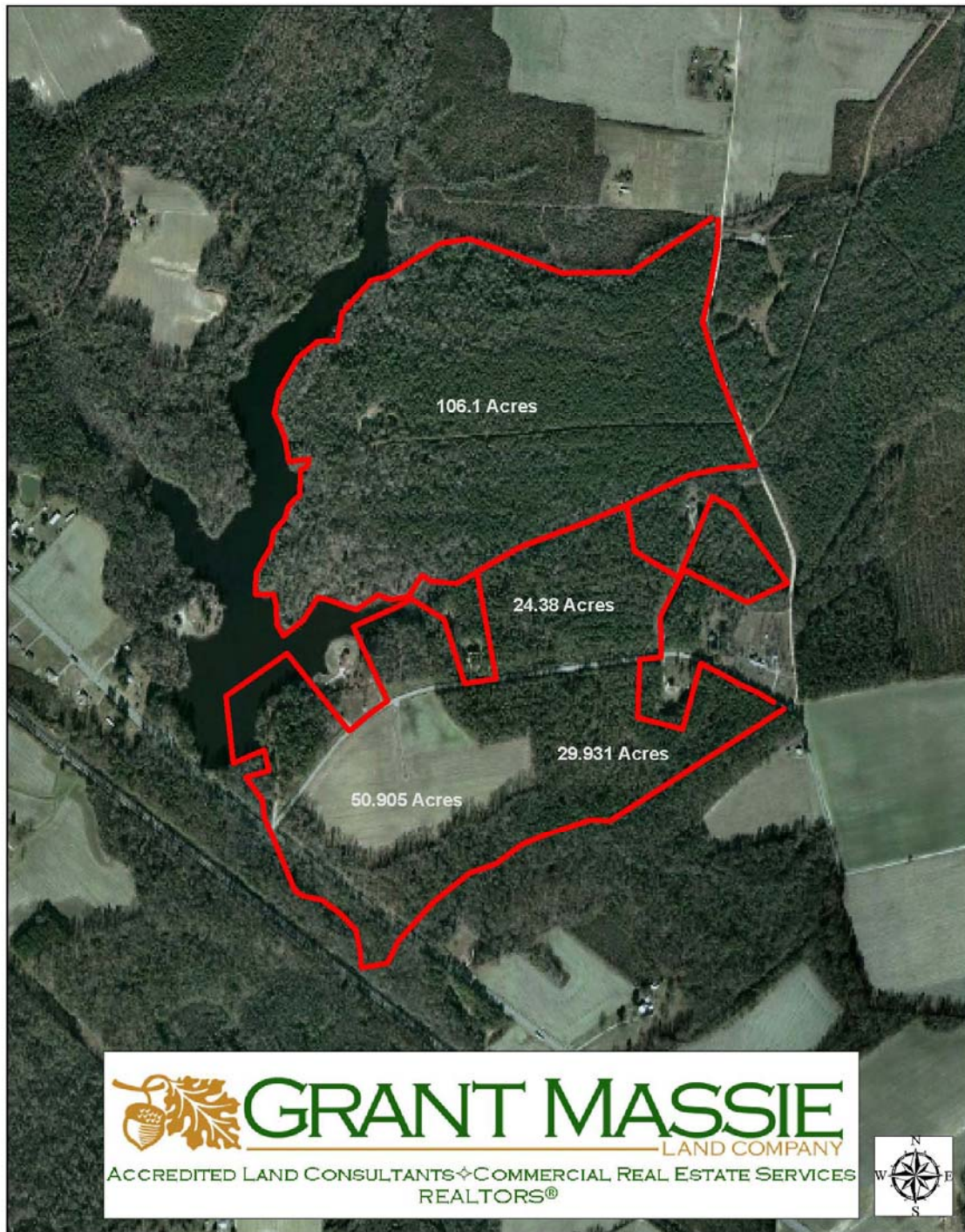
The property is located on the 35-acre +/- Freeman's Millpond.

There is approximately 22 acres of openland. It has 12 acres +/- of hardwood sawtimber, 65.3 acres +/- of mixed pulpwood, 45 acres +/- of thinned pine pulpwood and 67 acres +/- of unthinned pine pulpwood.

The access to Tract #250 (106.1 Acres) is via a woods road or through Tract #860.

# AERIAL PHOTOGRAPH

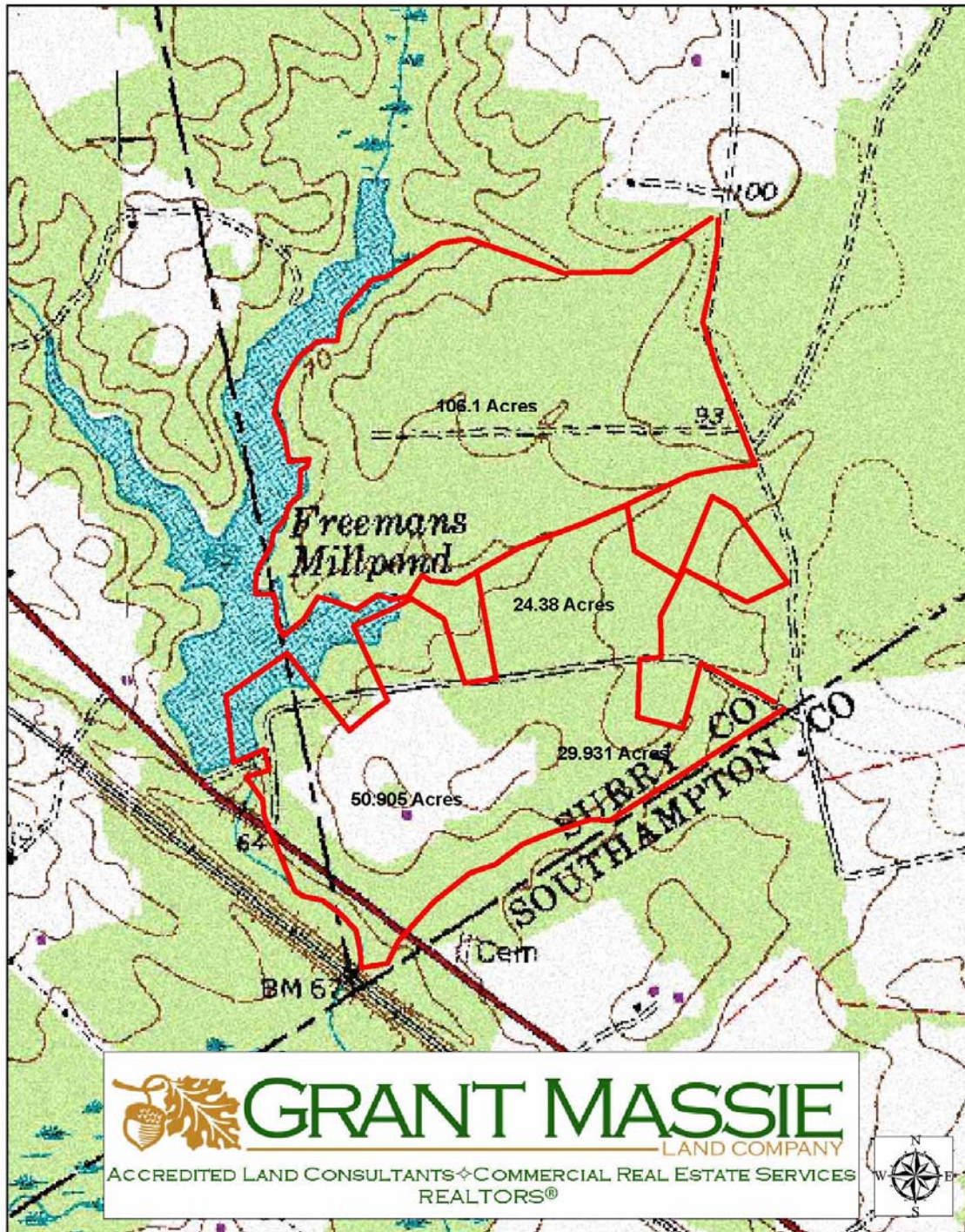
---



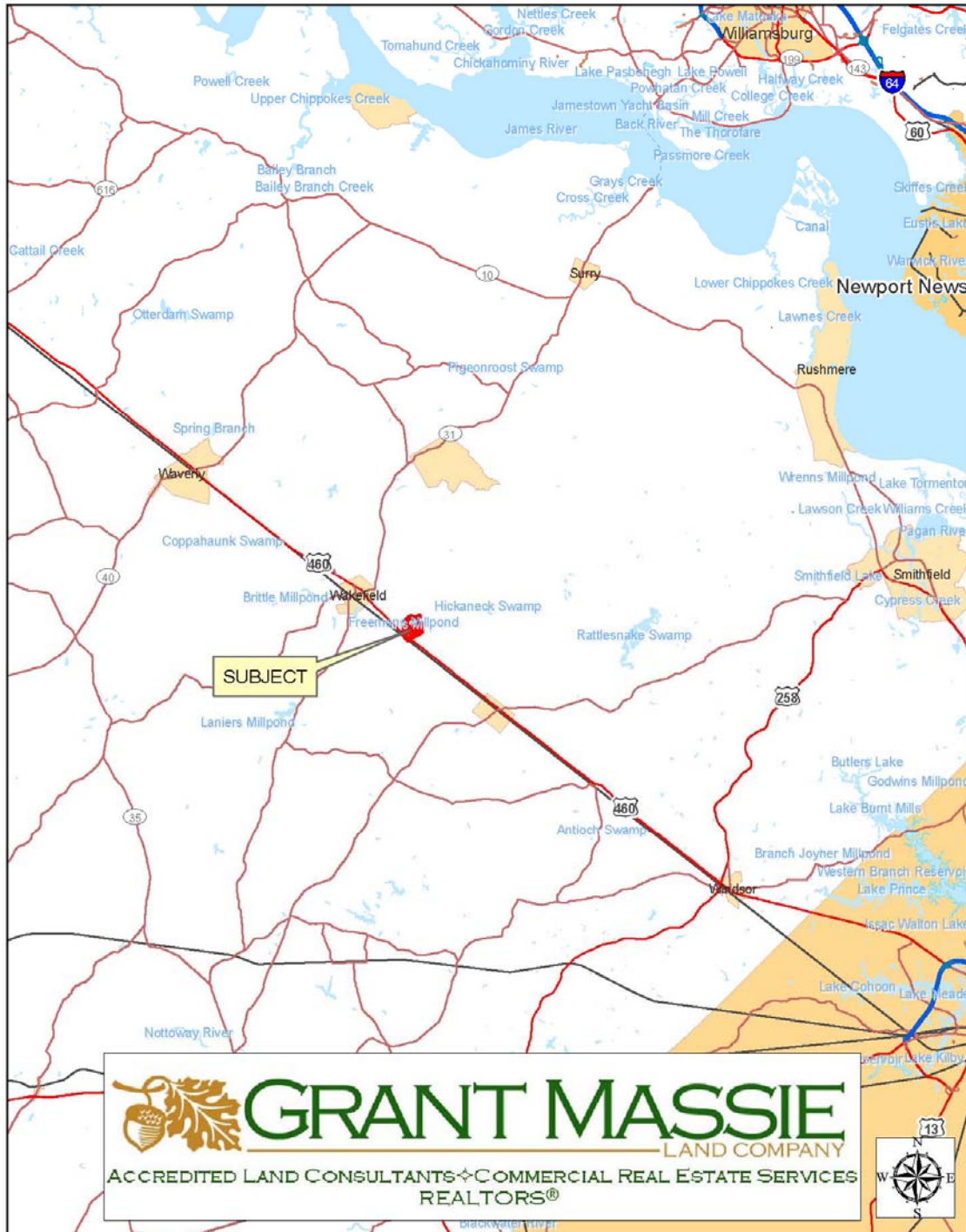


# TOPOGRAPHIC MAP

---



# LOCATION MAP





# **SPORTSMAN'S PARADISE!**

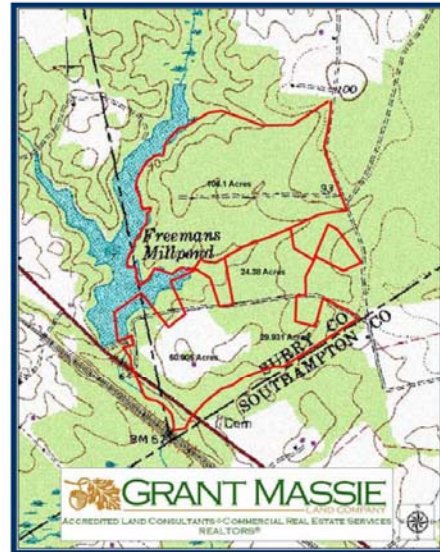
## **211.3 ACRES FOR SALE IN**

### **SURRY COUNTY, VIRGINIA**



#### **PROPERTY INFORMATION:**

- \*FRONTS ON FREEMAN'S MILL POND
  - \*FRONTAGE ON BOTH SIDES OF HIGHWAY 460 AND ROUTE 639
  - \*22 ACRES +/- OF CROPLAND
  - \*REMAINDER IN PINE PLANTATION AND HARDWOODS
- \*ASKING PRICE \$548,300**



FOR 24 HOUR  
RECORDED INFORMATION  
CALL LANDLINE:  
1-888-471-LAND #2116  
OR VISIT OUR WEBSITE AT:  
**WWW.GRANTMASSIE.COM**

#### **REPRESENTED BY:**

<b>NED MASSIE</b>	<b>BILL GRANT</b>	<b>JEFF HUFF</b>
ALC, CCIM, MBA	ALC, VLS	REALTOR, FORESTER
804-754-3474	804-754-3476	804-750-1207
NMassie@GrantMassie.com	WGrant@GrantMassie.com	JHuff@GrantMassie.com



#### **EXPERTISE—CONSULTATION—RESULTS**

1403 Pemberton Road, Suite 106; Richmond, VA 23238  
804-750-1200—FAX: 804-754-3485 TOLL FREE: 1-800-665-LAND  
All information deemed reliable, but not guaranteed.