



Eagle Crest Winter Haven, FL

202 Vacant Residential Lots

This is a great residential neighborhood in a desirable location northeast of Lake Elbert and east of Polk Community College in Winter Haven. The listing is for 202 residential lots that are completely finished ready to build with required infrastructure that includes paved streets and street lighting. Property owners association is in place with minimum home size of 1,700 SF heated area.



SAUNDERS
REAL ESTATE

Land • Commercial • Conservation • Property Management
5120 S. Lakeland Drive
Suite 3
Lakeland, FL 33813

*202 Vacant Residential Lots!
Winter Haven, FL • Polk County*

Toll Free: 1-877-518 LAND • www.saundersrealestate.com

Eagle Crest

Winter Haven, FL

202 Vacant Residential Lots



Excellent Location!
Finished Lots, Ready to Build!
Property Owners
Association in Place!

Land • Commercial • Industrial • Conservation • Land Management
5120 S. Lakeland Drive, Suite 3 • Lakeland, FL 33813
Phone: 863-648-1528 • Toll Free: 1-877-518 LAND
www.saundersrealestate.com



SAUNDERS
REAL ESTATE

202 Vacant Lots • Eagle Crest • Winter Haven, FL

Lots: 202 Vacant Lots

Price: \$2,020,000

Location:

2878 Eagle Nest View Drive
Winter Haven, FL • Polk County

Nearest Intersection: Buckeye Road NE
and Buckeye Loop Road

Current Use: Vacant residential

Future Land Use: Residential

Uses: Average 1/4 acre / 85'x125' lots

Minimum house size: 1,700 SF
heated area

Water and Sewer Provided by:
City of Winter Haven

Utilities Provided by:
TECO, Brighthouse

S.T.R.: 22-28-26

Subdivision ID: PB 144, Pg 20-22

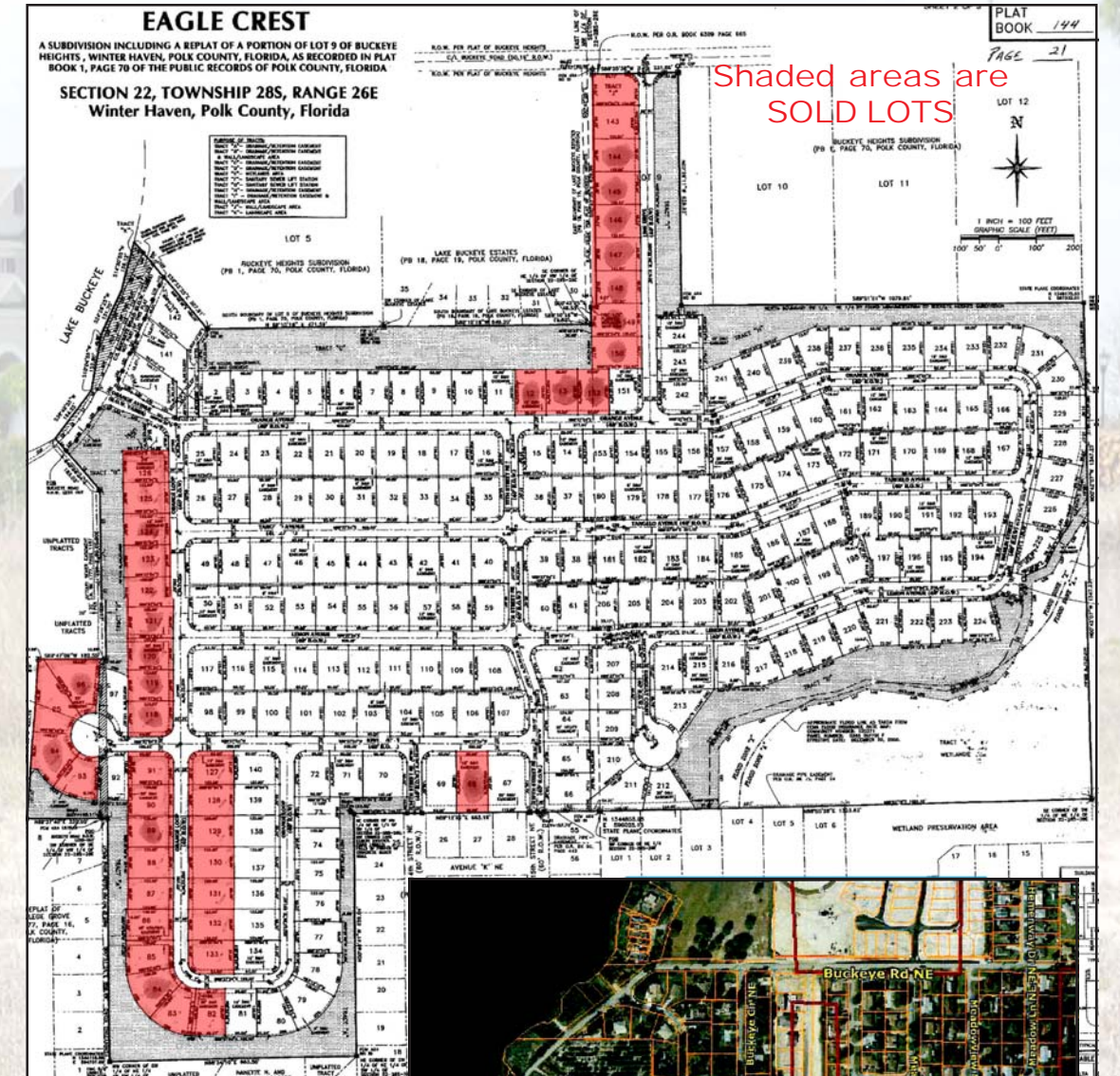


Eagle Crest contains existing homes of quality that add value to these 202 vacant lots. Existing homes are modern in design, new, and well kept.



This is a great residential neighborhood in a desirable location northeast of Lake Elbert and east of Polk Community College in Winter Haven. The listing is for 202 residential lots that are finished and ready to build with required infrastructure that includes paved streets and street lighting. Property owners association is in place.

Excellent Investment!



Entrance to the
Eagle Crest Community
on Buckeye Road NE

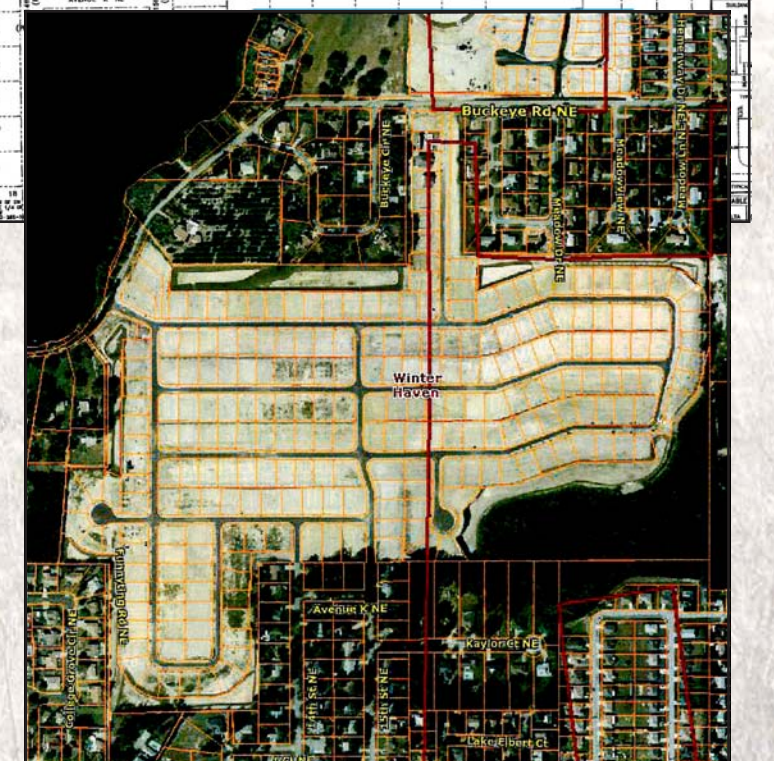


Entrance to the
Eagle Crest Community
on 14th Street NE



Driving Directions:

- Take CR 542 (Dundee Road) east from Winter Haven to intersection of Buckeye Loop Road
- Turn left (north) onto Buckeye Loop Road and go about 0.8 mile to Buckeye Road NE
- Turn left and go about 1/2 mile to the property entrance
- The Eagle Crest property entrance is on the left at Lime Drive



© 2009 Coldwell Real Estate Corporation. Coldwell Banker Commercial® is a registered trademark licensed to Coldwell Banker Real Estate Corporation. An Equal Opportunity Company. Each Office is Independently Owned And Operated.

While every attempt is made to provide as accurate information on this property offering as possible, COLDWELL BANKER COMMERCIAL SAUNDERS REAL ESTATE (CBCSRE) does not guarantee the accuracy thereof. Buyer shall rely entirely on their own information and inspection of property and records. © Copyright Coldwell Banker Commercial Saunders Real Estate. All Rights Reserved. Worldwide: All content inclusive of text, graphics, images, and logos is the property of CBCSRE. You may not copy this material by any means (including electronic copies), reproduce, duplicate, scan, modify, publish, transfer, use on your own web site, distribute, or create a derivative work without receiving written permission from CBCSRE.