

Section 1 Tract (#7006)

+/- 40 Acres

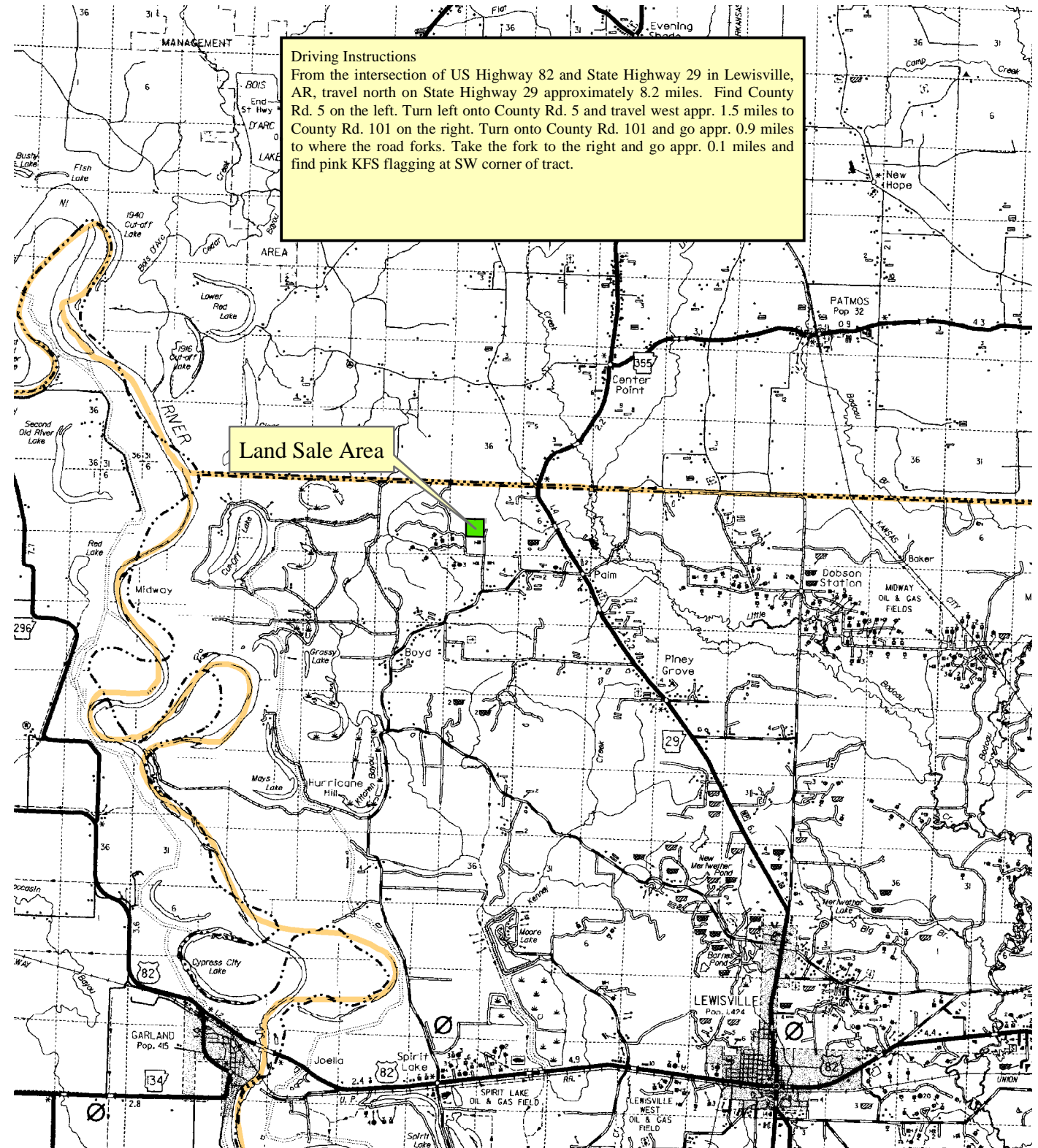
NE 1/4 of SW 1/4, Seciton 1, T15S, R25W

Lafayette County, Arkansas

Driving Instructions

From the intersection of US Highway 82 and State Highway 29 in Lewisville, AR, travel north on State Highway 29 approximately 8.2 miles. Find County Rd. 5 on the left. Turn left onto County Rd. 5 and travel west appr. 1.5 miles to County Rd. 101 on the right. Turn onto County Rd. 101 and go appr. 0.9 miles to where the road forks. Take the fork to the right and go appr. 0.1 miles and find pink KFS flagging at SW corner of tract.

Land Sale Area



0 1 2 4
Miles



Arkansas Highway Map
December, 2008
Printed By: GAK