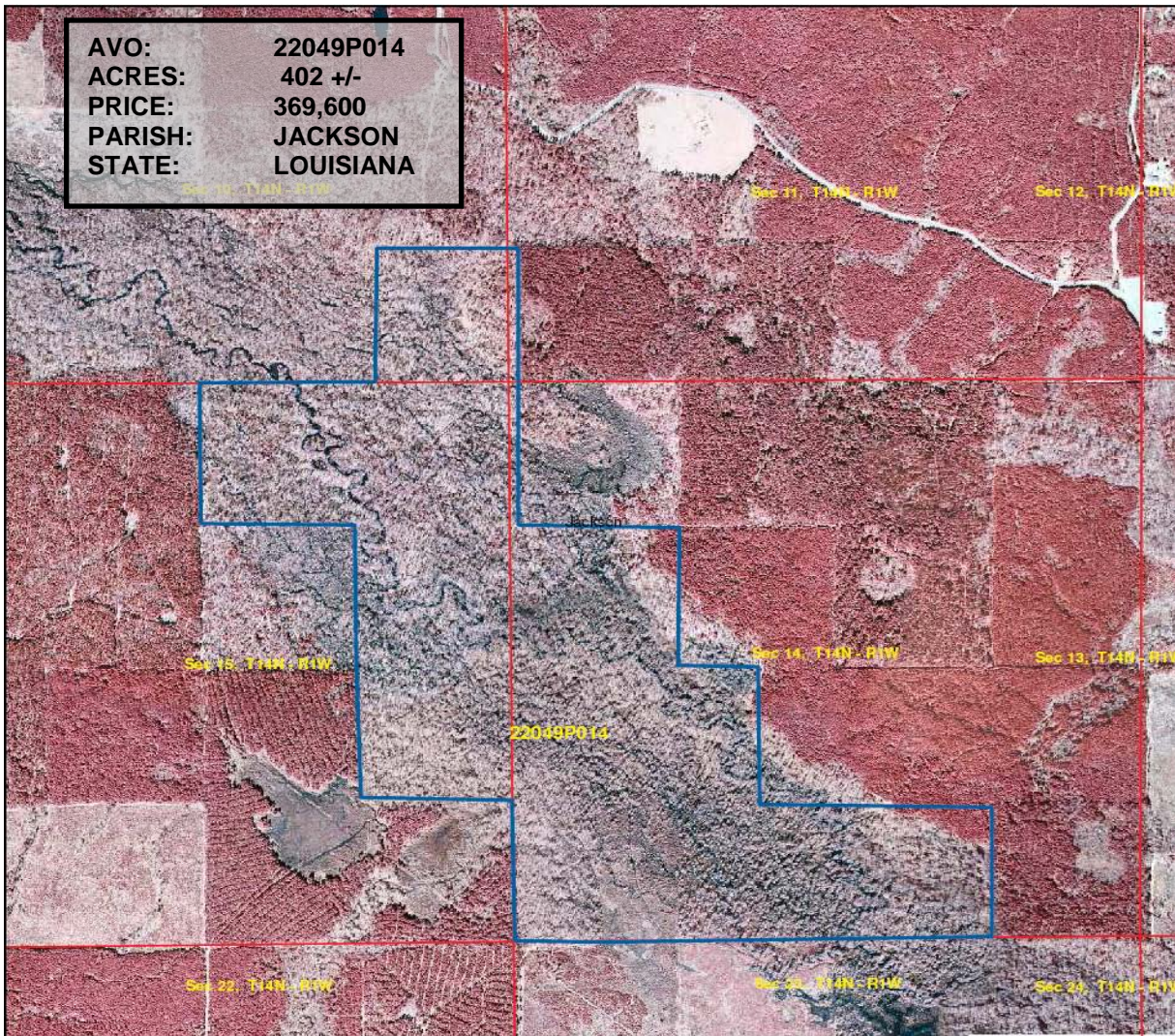


# ROCKLAND R. BURKS INC.



820 Hwy 2  
Sterlington, LA 71280  
Office: 318-665-0408  
Fax: 318-665-9299  
Cyndi@rrbland.com  
landwatch.com  
landsofamerica.com

Boundary Lines are Approx.

## Aerial Map Parcel # 22049P014 Jackson Parish, LA - approx. 402 acres +/-

0 650 1,300 2,600  
Feet



### Land Description:

Great recreational tract located close to Caney Lake. This Jackson parish tract is an excellent recreational property located south of Chatham and not far from Hwy 810. This parcel is primarily a bottomland hardwood timber tract with plenty of harvestable hardwood timber on tract. Excellent, secluded hunting tract with the potential for great duck and deer hunting. Less than 45 minutes from Monroe or Winnfield this tract is perfect for anyone looking to enjoy the hunting experience while being close to their own bed the night of the hunt. Access is not permitted, although it can be accessed by timber company roads with the 4-wheeler trails. All minerals are reserved. Please call if you would like to go see this tract.

Call our Broker/Rep. Rocky Burks at:  
**(318-245-2699)**  
**John Harkey**  
**(318-614-1897)**  
Or visit [landwatch.com](http://landwatch.com) or  
[landsofamerica.com](http://landsofamerica.com) for maps and  
additional information