

Chambers Co., AL

SEE PHOTOS
BELOW!

www.cypruspartners.com

Reference # 202

More info at
205-870-5455

Land For Sale

122 acres +/-

\$265,000

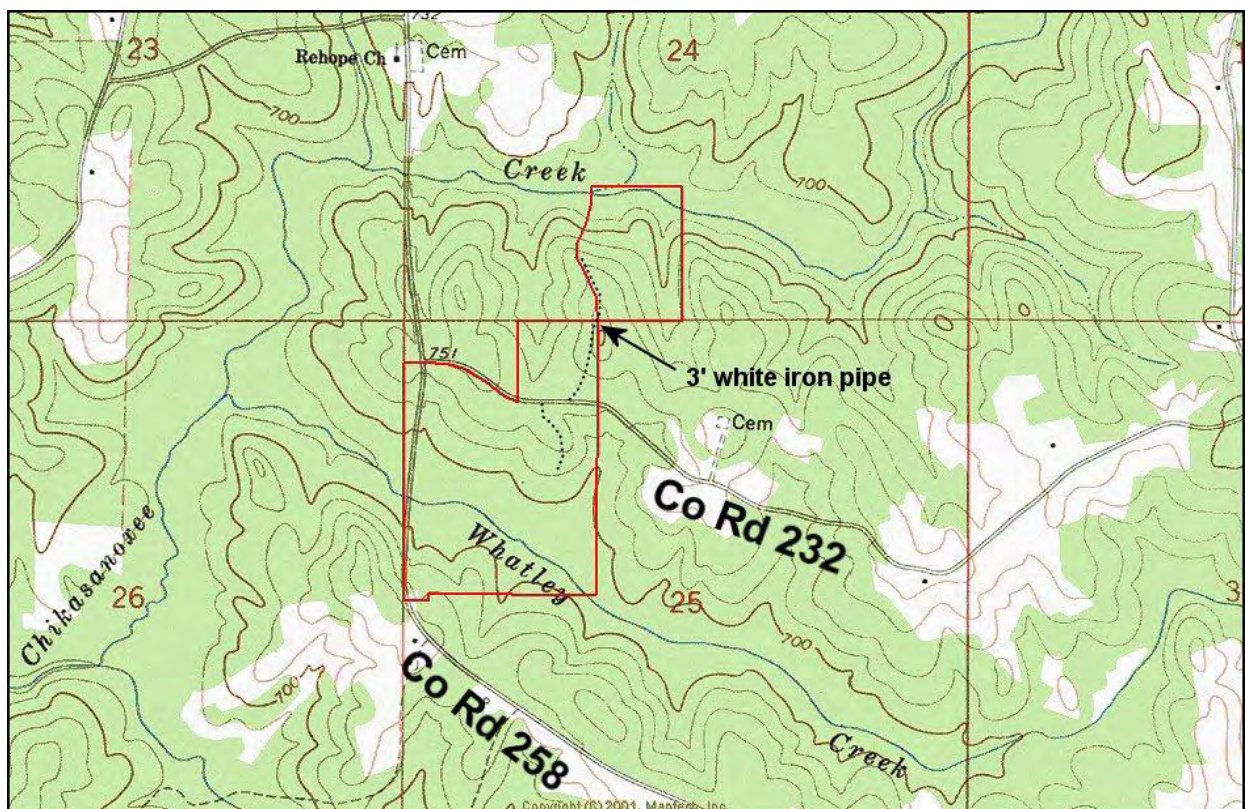
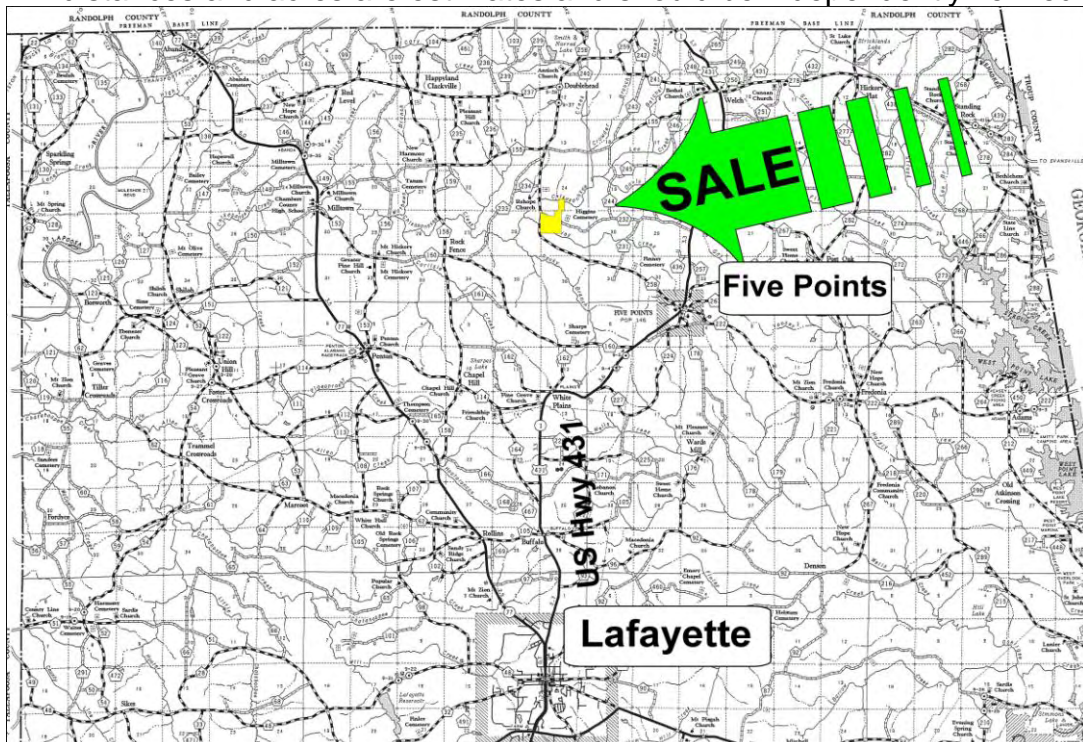
Exclusive Agent For Owner

CYPRUS
PARTNERS

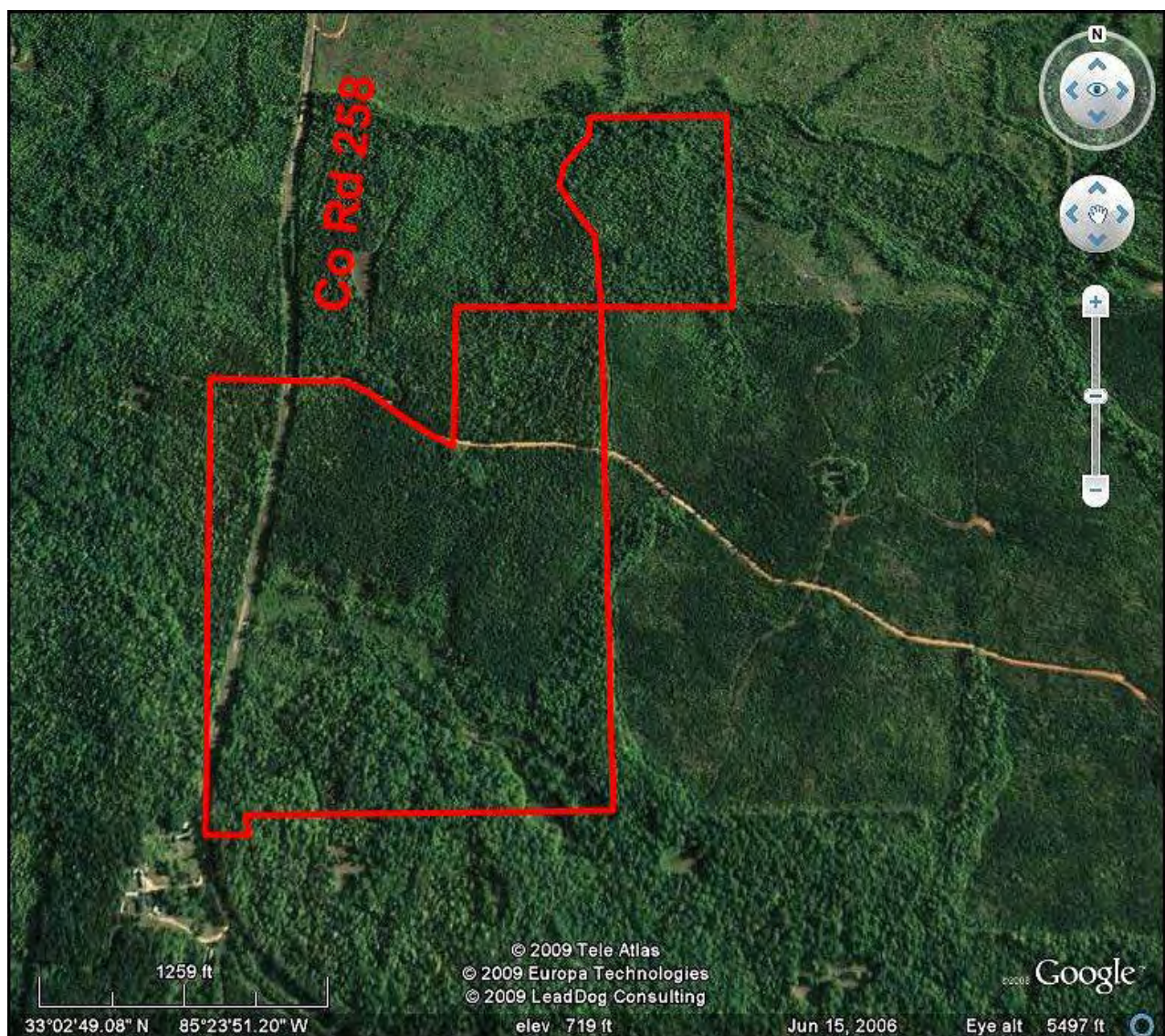
P O Box 590045
Homewood, AL 35259

- ⇒ Located about 15 minutes north of Lafayette near Five Points
- ⇒ Access on two county roads, one paved and one dirt
- ⇒ Property has a large creek crossing it with beautiful bottomland hardwoods
- ⇒ Excellent timber investment: about 38 acres of planted pine about 20 years old
- ⇒ Excellent hunting property. Extensive deer sign found on the property

All distances and acres are estimates and should be independently verified



NOTICE: Investment in land carries risk. Prospective buyers should understand and independently verify the risk factors before buying this property. All information furnished by Cyprus Partners about this property has been obtained from sources believed to be reliable. However, neither Cyprus Partners nor the property owner makes any representation or warranty as to completeness or accuracy. This property is subject to prior sale, price change and withdrawal from the market without notice. No representation or warranty is made, express or implied, as to the condition of the property, boundaries, fitness for any particular use, Fair Market Value, access, acres, zoning, or condition of title.



Aerial view



View of pine plantation along Co Rd 258



Woods road through the pine plantation



The trees in this plantation run 7" to 11" Dbh



A view of Whatley Creek & bottomland hardwoods



A beaver pond on Whatley Creek



Bottomland hardwood along Whatley Creek



These White Oaks are over 18" Dbh



Along Co Rd 232



Excellent deer habitat - deer sign was observed all over the property