

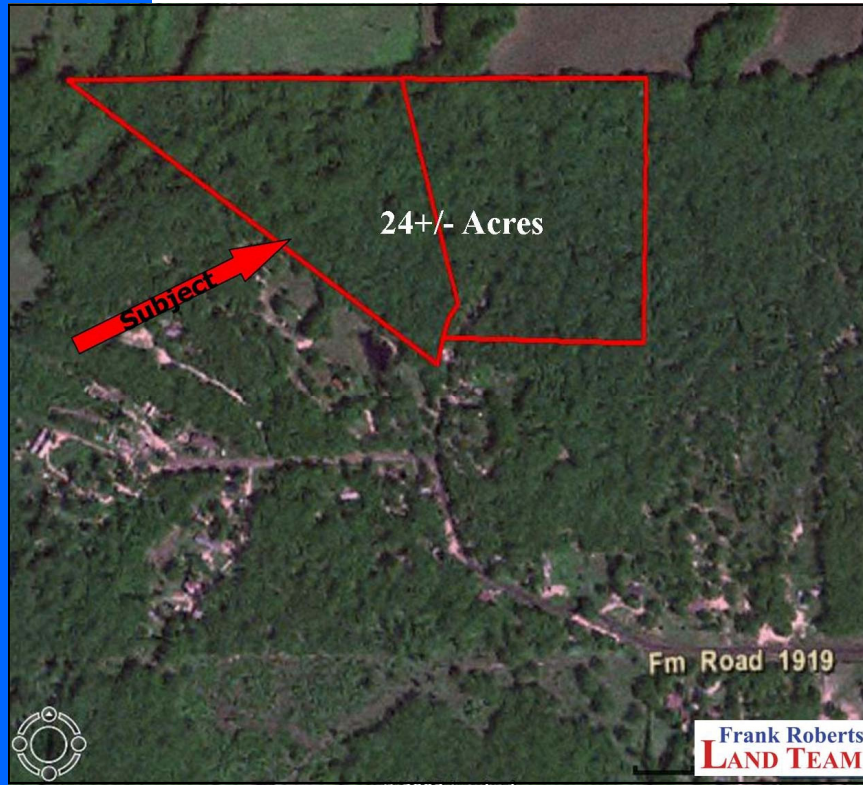
24 +/- Acres

FM 1919—Fruitvale, TX

FOR SALE

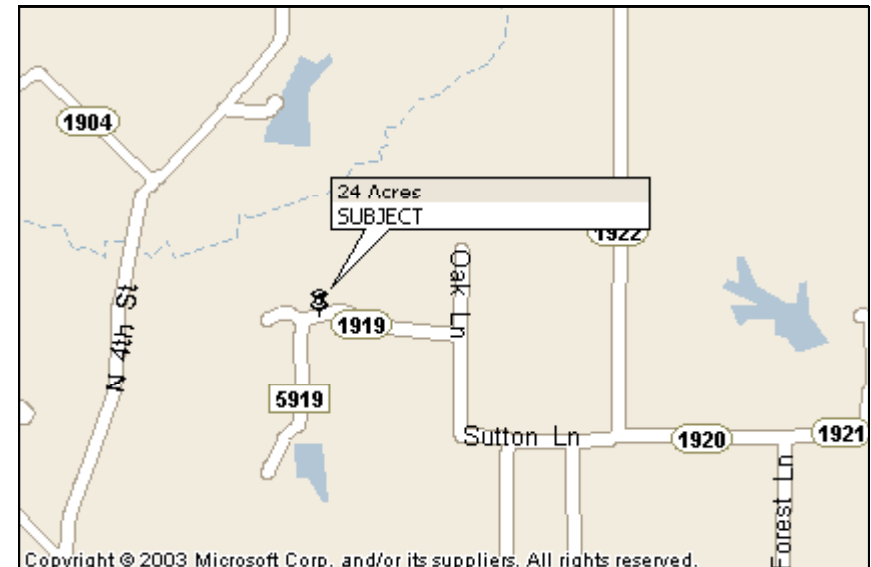
\$72,000

Serene Setting with Heavy Timber



DIRECTIONS:

From Dallas-US HWY 80 east 52 mi to Fruitvale, turn left (N) on FM 1918 and go 1.5 mi to FM 1919 (Elm St), property at end of Rd, SOP.



RE/MAX Landmark

115 E. Moore Ave

Terrell, TX 75160

www.frankrobertslandteam.com



Exclusively offered by:

Frank J. Roberts

REALTOR, Owner

Office: 972-524-0689

Fax: 972-551-2525

frank@landmark-real-estate.com



Information herein deemed reliable but not guaranteed.

24 +/- Acres

FM 1919—Fruitvale, TX

Frank Roberts LAND TEAM

FEATURES:

UTILITIES:

- Co-op Water
- Co-op Electric

24 acres of Beautiful, Heavy Timber with nice rolling terrain and gorgeous views. Great location for secluded home. Priced to sell quickly. Seller will divide into (2) 12 ac tracts at \$40,000 each.



RE/MAX Landmark
115 E. Moore Ave
Terrell, TX 75160
www.frankrobertslandteam.com

Information herein deemed reliable but not guaranteed.

Exclusively offered by:

Frank J. Roberts

REALTOR, Owner

Office: 972-524-0689

Fax: 972-551-2525

frank@landmark-real-estate.com

