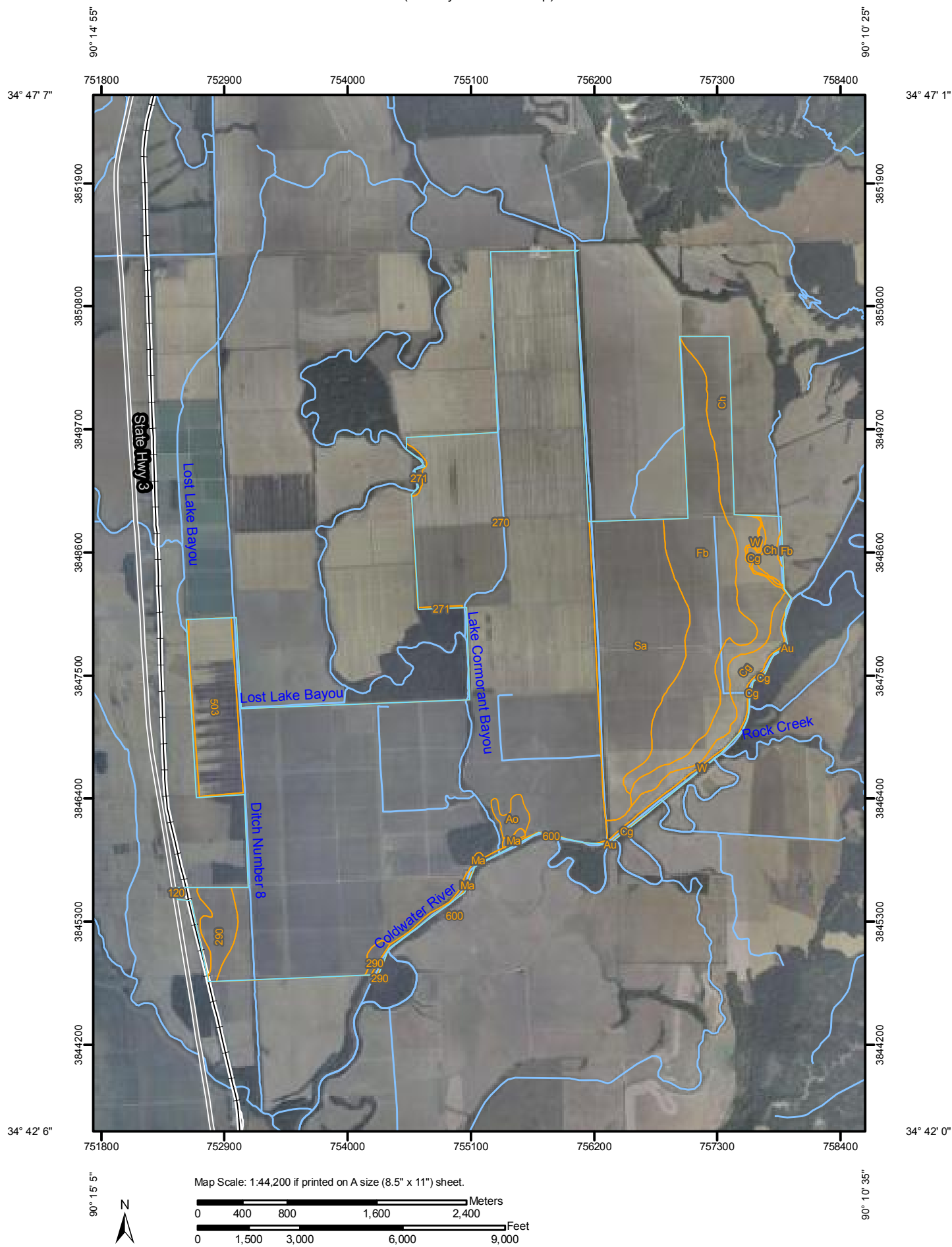


Soil Map—DeSoto County, Mississippi, Tate County, Mississippi, and Tunica County, Mississippi
(Hussey Farm Soil Map)



Soil Map—DeSoto County, Mississippi, Tate County, Mississippi, and Tunica County, Mississippi
(Hussey Farm Soil Map)

MAP LEGEND

Area of Interest (AOI)

 Area of Interest (AOI)

Soils

 Soil Map Units

Special Point Features

-  Blowout
-  Borrow Pit
-  Clay Spot
-  Closed Depression
-  Gravel Pit
-  Gravelly Spot
-  Landfill
-  Lava Flow
-  Marsh or swamp
-  Mine or Quarry
-  Miscellaneous Water
-  Perennial Water
-  Rock Outcrop
-  Saline Spot
-  Sandy Spot
-  Severely Eroded Spot
-  Sinkhole
-  Slide or Slip
-  Sodic Spot
-  Spoil Area
-  Stony Spot



Very Stony Spot



Wet Spot



Other

Special Line Features



Gully



Short Steep Slope



Other

Political Features



Cities

Water Features



Oceans



Streams and Canals

Transportation



Rails



Interstate Highways



US Routes



Major Roads

MAP INFORMATION

Map Scale: 1:44,200 if printed on A size (8.5" × 11") sheet.

The soil surveys that comprise your AOI were mapped at scales ranging from 1:15,840 to 1:24,000.

Please rely on the bar scale on each map sheet for accurate map measurements.

Source of Map: Natural Resources Conservation Service

Web Soil Survey URL: <http://websoilsurvey.nrcs.usda.gov>

Coordinate System: UTM Zone 15N NAD83

This product is generated from the USDA-NRCS certified data as of the version date(s) listed below.

Soil Survey Area: DeSoto County, Mississippi

Survey Area Data: Version 7, Feb 5, 2008

Soil Survey Area: Tate County, Mississippi

Survey Area Data: Version 6, Feb 12, 2008

Soil Survey Area: Tunica County, Mississippi

Survey Area Data: Version 4, Aug 31, 2006

Your area of interest (AOI) includes more than one soil survey area. These survey areas may have been mapped at different scales, with a different land use in mind, at different times, or at different levels of detail. This may result in map unit symbols, soil properties, and interpretations that do not completely agree across soil survey area boundaries.

Date(s) aerial images were photographed: 9/30/2004; 10/4/2004

The orthophoto or other base map on which the soil lines were compiled and digitized probably differs from the background imagery displayed on these maps. As a result, some minor shifting of map unit boundaries may be evident.



Map Unit Legend

DeSoto County, Mississippi (MS033)			
Map Unit Symbol	Map Unit Name	Acres in AOI	Percent of AOI
Cg	Collins silt loam (adler)	85.3	2.1%
Ch	Collins silty clay loam (adler)	225.5	5.7%
Fb	Falaya silty clay loam (arkabutla)	367.9	9.2%
Sa	Sharkey clay, nearly level phase	389.0	9.8%
W	Water	23.4	0.6%
Subtotals for Soil Survey Area		1,091.1	27.4%
Totals for Area of Interest		3,982.8	100.0%

Tate County, Mississippi (MS137)			
Map Unit Symbol	Map Unit Name	Acres in AOI	Percent of AOI
Ao	Alligator clay	18.1	0.5%
Au	Arkabutla silty clay loam	0.1	0.0%
Ma	Made land	6.1	0.2%
Subtotals for Soil Survey Area		24.3	0.6%
Totals for Area of Interest		3,982.8	100.0%

Tunica County, Mississippi (MS143)			
Map Unit Symbol	Map Unit Name	Acres in AOI	Percent of AOI
115	Dundee silt loam, 0 to 2 percent slopes	0.1	0.0%
120	Tensas silty clay loam, 0 to 2 percent slopes	0.2	0.0%
270	Sharkey clay, 0 to 1 percent slopes	2,660.9	66.8%
271	Sharkey clay, 0 to 2 percent slopes, frequently flooded	7.1	0.2%
290	Alligator clay, 0 to 1 percent slopes	55.1	1.4%
503	Miscellaneous water	153.4	3.9%
600	Water	14.2	0.4%
Subtotals for Soil Survey Area		2,891.0	72.6%
Totals for Area of Interest		3,982.8	100.0%