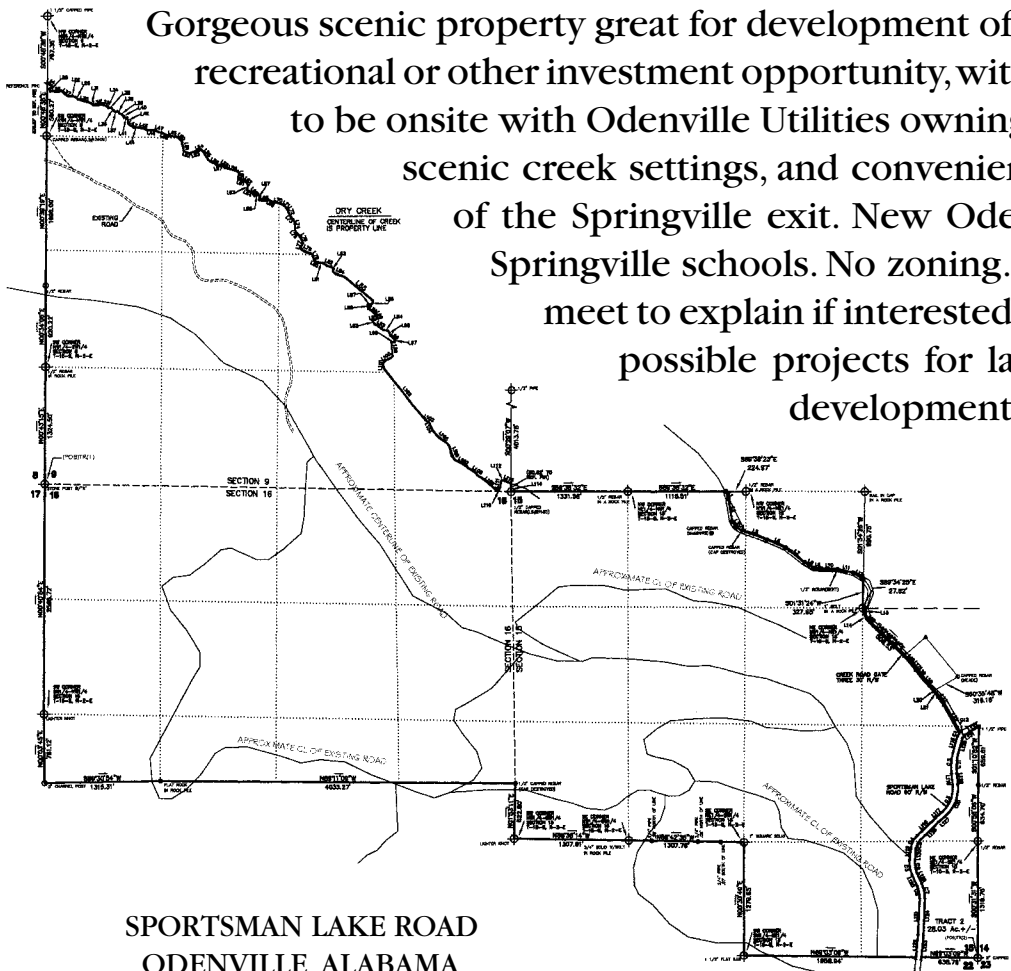


1200+ ACRES

INVESTMENT/RESIDENTIAL



Gorgeous scenic property great for development of a nice subdivision or future recreational or other investment opportunity, with sewer coming soon. Sewer to be onsite with Odenville Utilities owning plant. Mountain top views, scenic creek settings, and convenient to I-59, within 2 - 5 miles of the Springville exit. New Odenville schools and possible Springville schools. No zoning. Two entrances, will need to meet to explain if interested. Call Brian for this and other possible projects for land, commercial, residential, development projects.



SPORTSMAN LAKE ROAD
ODENVILLE, ALABAMA



(205) 699-5816
www.LovejoyRealty.com
www.StClairAL.com

Brian Camp
(205) 819-1733