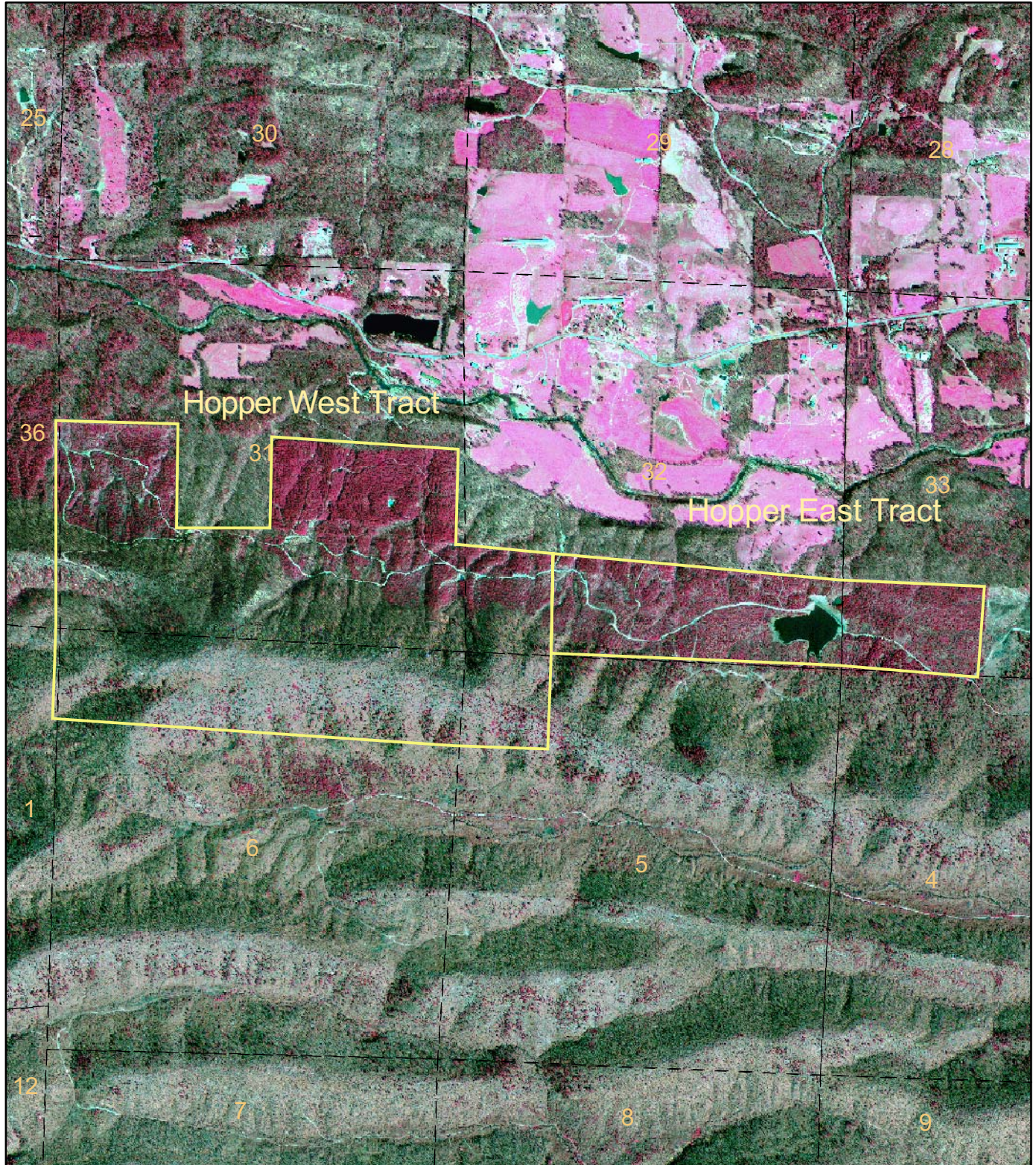


Curt Bean Lumber Company, Inc. and Curt Bean Transport, Inc.  
Pt. Sec. 31, 32, 33, T4S, R25W;  
Pt. Sec. 5 & 6, T5S, R25W  
Montgomery & Pike County, Arkansas



0 0.125 0.25 0.5  
Miles



Created: October, 2008  
By: JDT