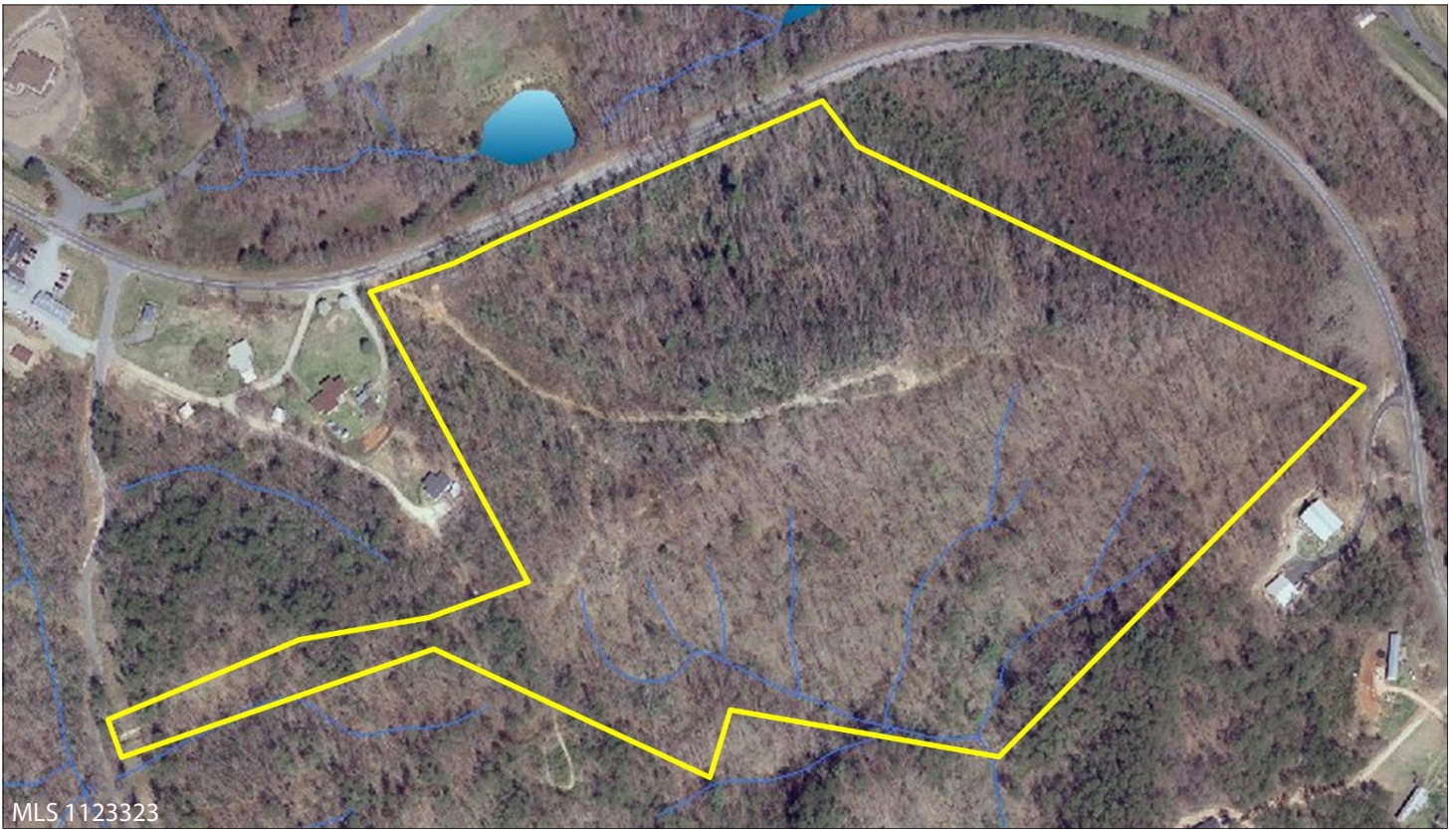


INCREDIBLE 360° VIEWS

GREENVILLE, SC



29.9± Acres on Beaver Dam Road, Traveler's Rest, Greenville County, SC

This property is ideal for the homeowner looking for peace and quiet in the foothills of northern Greenville county or the developer interested in a small mountainous development. It is located just 0.3 miles from Highway 25N, 2.6 miles from Highway 11, and 21 miles from Downtown Greenville. City water is available and several roads have been cut into the property for access to Beaver Dam and Wilkes Lee Roads. Seller financing is available.

- Beautiful 360° mountain views
- Overlooks the Cliffs Valley development
- City water available & no zoning
- Seller financing available

Only \$403,650 **Reduced**

For more information, contact Scott Cornelson or Pat McNamara.

CAROLINA
LAND COMPANY
THE LAND BROKERS

PO BOX 787
GREENVILLE, SC 29602

WWW.CAROLINALANDCOMPANY.COM

PHONE: 864-232-6922
FAX: 864-271-0370

No warranty or representation, expressed or implied, is made regarding the accuracy of the information contained herein, and it is submitted subject to errors, omissions, change of price, withdrawal without notice, and to any other special listing conditions imposed by our principals.

