

1 00 ACRES +/- LUNENBURG COUNTY, VIRGINIA



REPRESENTED BY:

JEFFREY S. HUFF
REALTOR[®], FORESTER

HORACE R. HIGGINS
REALTOR[®]

TABLE OF CONTENTS

- I. PROPERTY DESCRIPTION
- II. TAX MAP
- III. PHOTOGRAPHS
- IV. AERIAL PHOTO
- V. TOPOGRAPHIC MAP
- VI. LOCATION MAP
- VII. FLYER

PROPERTY DESCRIPTION

The subject property is shown on Lunenburg County Tax Map records as a Portion of Parcel Number 47-A-30. According to the tax records the entire property contains 186.315 acres; however, the subject property encompasses the northern half representing 100 Acres +/- . The deed is recorded in Deed Book 202 on Page 650.

The subject property is currently zoned Agricultural. It has long road frontage on State Route 648 (Mayflower Road).

The subject property contains approximately 21 acres of agricultural land. The reminder of the property is wooded with a mixed stand of young hardwoods and pines. A portion of the wooded area was harvested in the early 1990s and left to naturally re-seed.

The subject property is located just over 2 miles South of Kenbridge.

PHOTOGRAPHS



ROLLING OPENLAND



PINE PLANTATION NEAR ROAD



FRONTAGE ON ROUTE 648



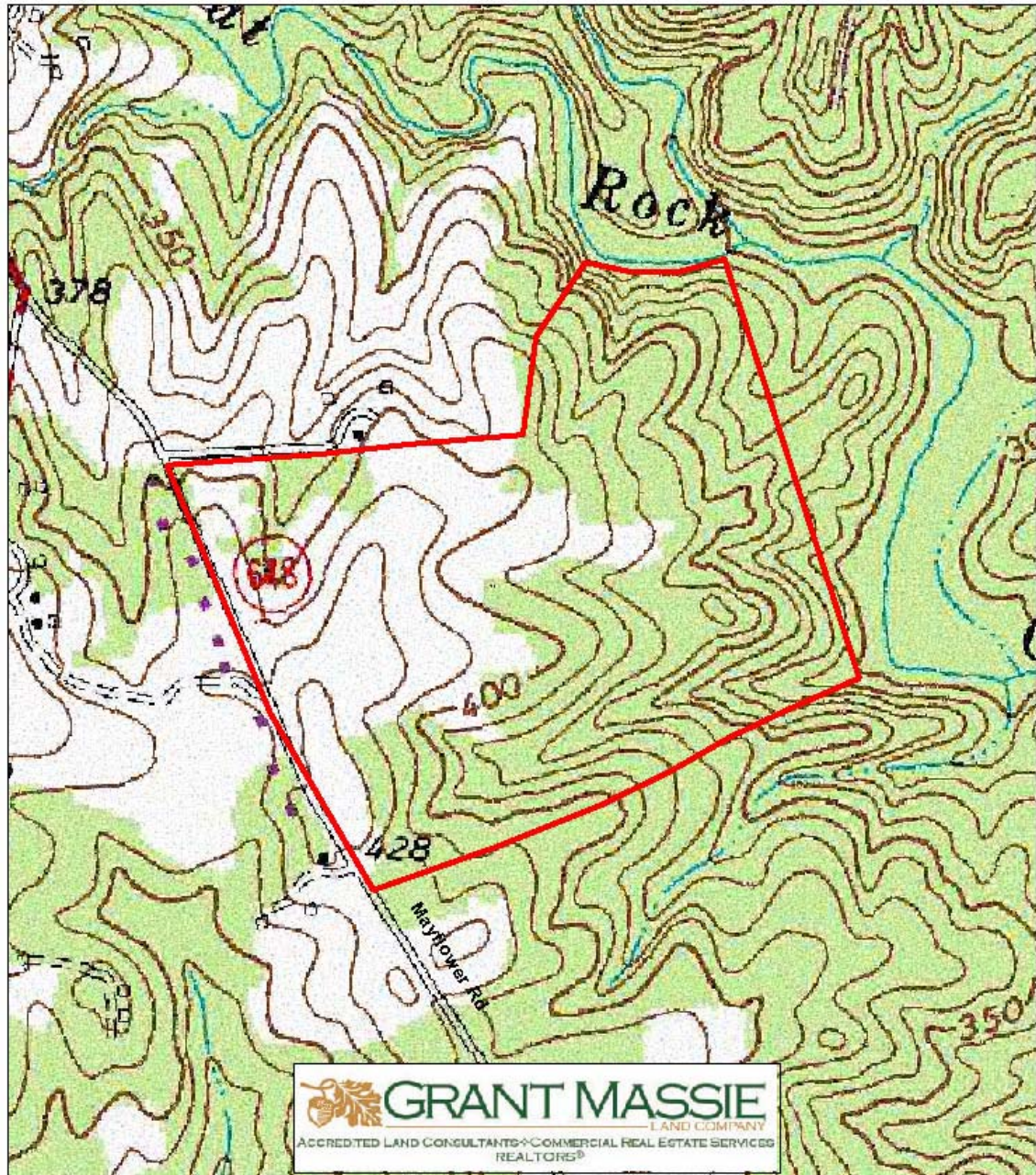
OPENLAND ALONG ROUTE 648

AERIAL PHOTOGRAPH



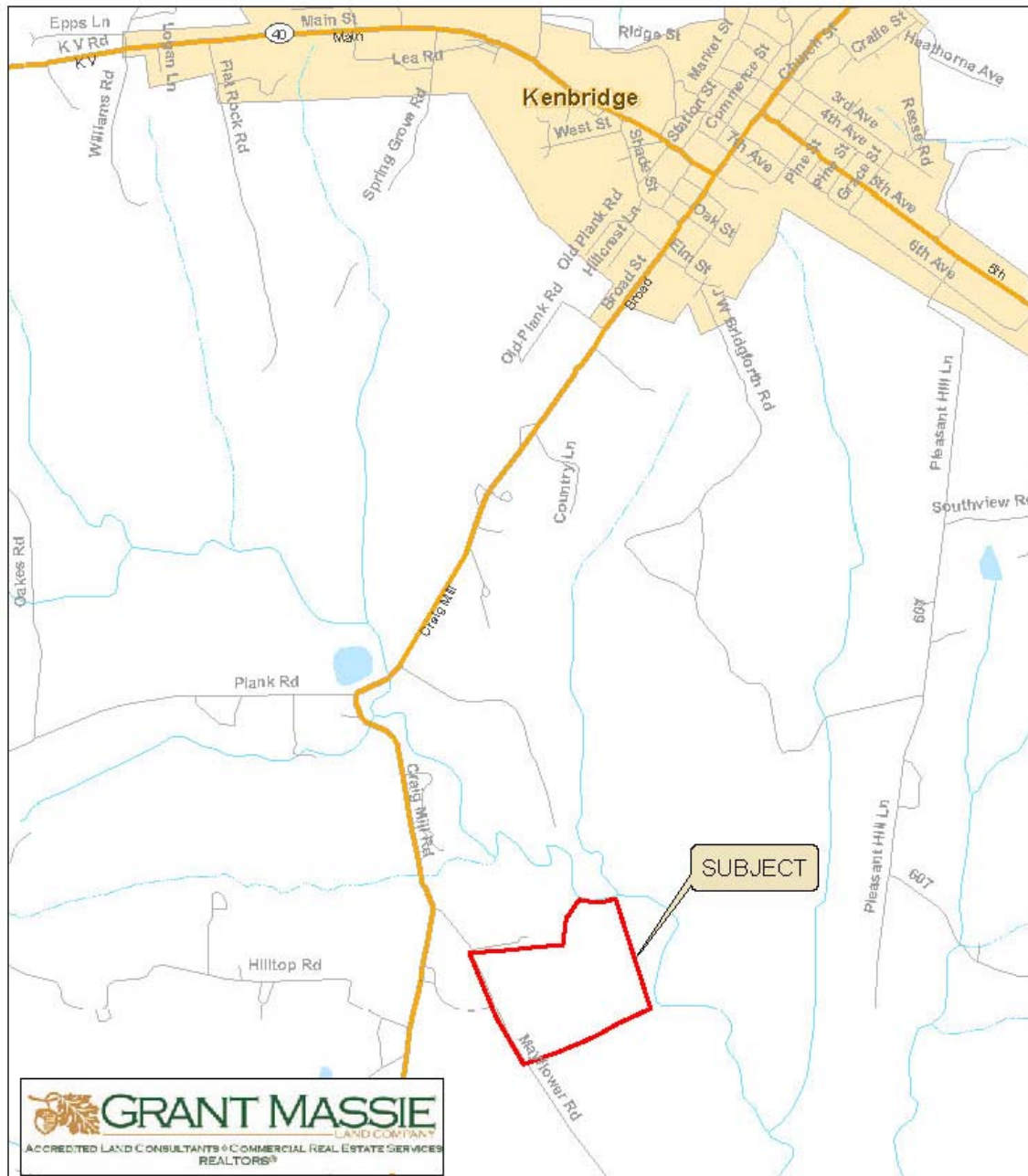
Information from sources is deemed reliable but not in any way guaranteed.

TOPOGRAPHIC MAP



Information from sources is deemed reliable but not in any way guaranteed.

LOCATION MAP



Information from sources is deemed reliable but not in any way guaranteed.

100 +/- ACRES FOR SALE IN LUNENBURG COUNTY



PROPERTY INFORMATION:

- *Located Just Over 2 Miles South Of Kenbridge
- *Long Frontage on Route 648 (Mayflower Road)
- *21 Acres +/- Of Open Land
- *Remainder Wooded With Young Hardwoods And Pines
- *Ideal Investment For Horses and/or Homesite(s)

FOR 24 HOUR RECORDED
INFORMATION CALL:
LANDLINE: 1-888-471-LAND #2102
OR LOG ON TO OUR WEBSITE AT:
www.GrantMassie.com

\$250,000

REPRESENTED BY:

JEFF HUFF
Forester, REALTOR
(804) 750-1207
JHuff@GrantMassie.com

HORACE HIGGINS
REALTOR
(804) 750-2040
HHiggins@GrantMassie.com

All information deemed reliable but not guaranteed.

 **GRANT MASSIE**
LAND COMPANY
ACCREDITED LAND CONSULTANTS ♦ COMMERCIAL REAL ESTATE SERVICES
REALTORS®

EXPERTISE-CONSULTATION-RESULTS

1403 PEMBERTON ROAD SUITE 106
RICHMOND, VA 23238
(804) 750-1200 FAX: (804) 754-3485
TOLL FREE 1-800-665-LAND