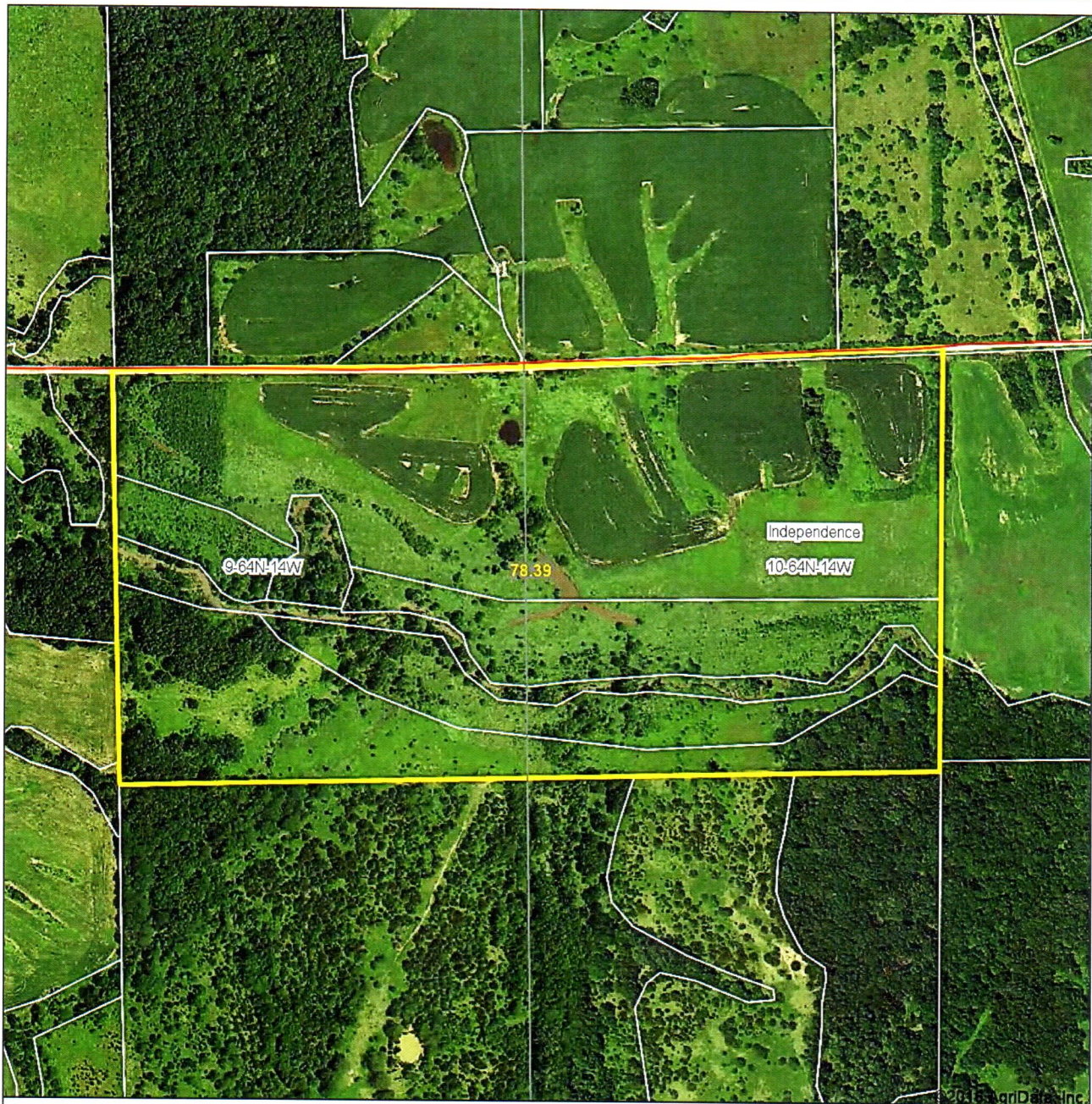


Aerial Map



Land Pros, LLC

map center: 40° 21' 54.96, -92° 27' 37.61

0ft 492ft 984ft

Maps Provided By:



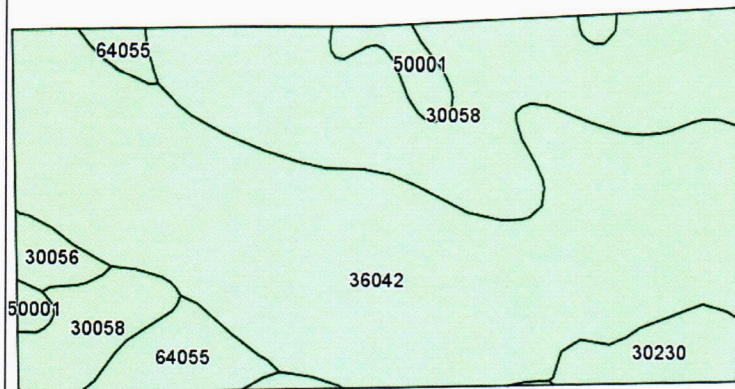
10-64N-14W
Schuyler County
Missouri



10/10/2016

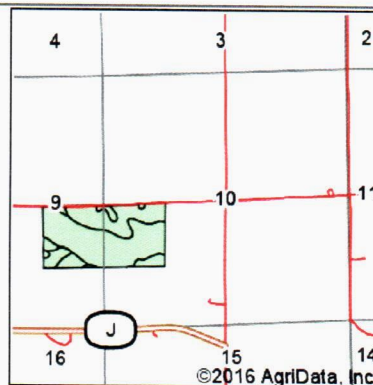
Field borders provided by Farm Service Agency as of 5/21/2008.

Soils Map



©2016 AgriData, Inc.

Soils data provided by USDA and NRCS.



©2016 AgriData, Inc.

State: **Missouri**
 County: **Schuyler**
 Location: **10-64N-14W**
 Township: **Independence**
 Acres: **78.39**
 Date: **10/10/2016**

United
Country
Real Estate

Land Pros, LLC

Maps Provided By:

surety
 CUSTOMIZED ONLINE MAPPING
 © AgriData, Inc. 2016 www.AgriDataInc.com



Area Symbol: MO197, Soil Area Version: 16

Code	Soil Description	Acres	Percent of field	Non-Irr Class *c	Corn	Soybeans
36042	Vesser silt loam, 0 to 2 percent slopes, occasionally flooded	43.19	55.1%	IIIw		
30058	Gara loam, 14 to 18 percent slopes, moderately eroded	24.84	31.7%	VIe		
64055	Vigar-Zook-Excello complex, 1 to 5 percent slopes	3.81	4.9%	IIIw		
30230	Winnegan loam, 20 to 35 percent slopes, eroded	3.05	3.9%	VIe		
50001	Armstrong loam, 5 to 9 percent slopes, eroded	2.19	2.8%	IIIe	5	2
30056	Gara fine sandy loam, 20 to 35 percent slopes, eroded	1.31	1.7%	VIIe		
Weighted Average					0.1	0.1

*c: Using Capabilities Class Dominant Condition Aggregation Method

Soils data provided by USDA and NRCS.



All Measurements are
For FSA Programs Only

Wetland Determination Identifiers

- Restricted Use
- ▼ Limited Restrictions
- Exempt from Conservation Compliance Provisions

Disclaimer: Wetland identifiers do not represent the size, shape or specific determination of the area. Refer to your original determination (CPA-026 and attached maps) for exact wetland boundaries and determinations, or contact NRCS.

Schuyler Co. FSA

SB-Soybeans-COM-GR
C-Corn-YEL-GR
Hay-Mixfg-LGM-Fg
P-Mixfg-LGM-GZ
TP-Timber Pasture-FTA-GZ
GLS-Grass Left Standing-Mixfg-LGM
WHEAT-SRW-GR
All land is NI

*Unless notated on Map

1:4,270

Program Year: 2016

Created: 6/1/2016

Flown: 2014-07-09

- clu
- crp
- plss

**Farm 838
Tract 320**

