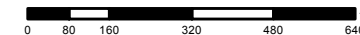
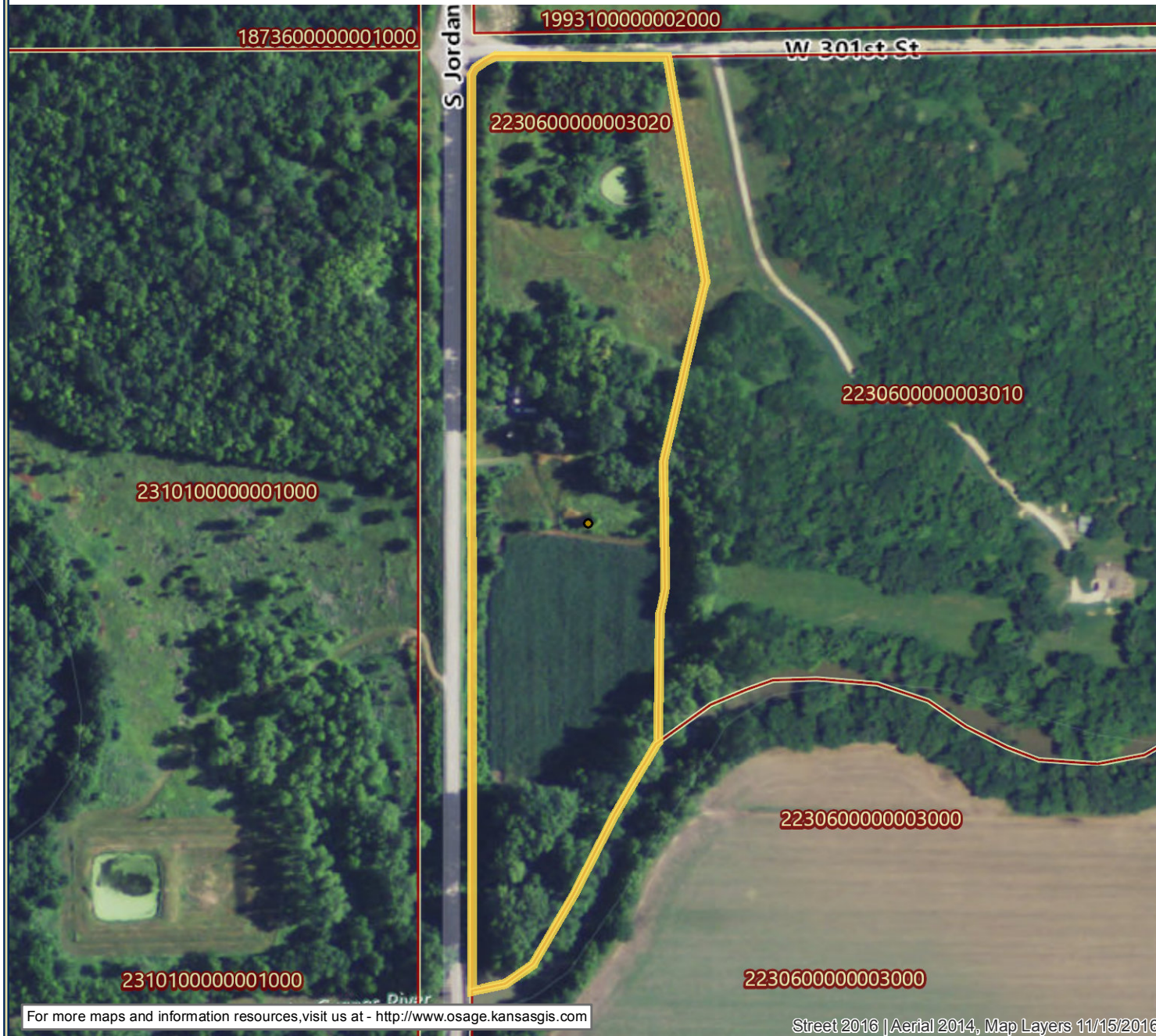




Osage
County, Kansas

Osage Rural Retreat



pointLayer

● Override 1

□ Property Parcels

□ County Boundary

7/5/2017



Osage County makes every effort to produce and publish the most current and accurate information possible. This information is furnished as a public service. The information must be accepted and used by the recipient with the understanding that the data was developed and collected for the purpose of developing property valuations, using the criteria of fair market value, as required by the State of Kansas. The Appraised Value and Tax information are updated at different times during the year and, therefore, may not always reflect same year values. Osage County assumes no liability whatsoever associated with the use or misuse of such data, and disclaims any representation or warranty regarding the completeness or accuracy of the data.

Note: Acreage and Square Footage data shown are approximate and may not be consistent with records maintained for appraisal purposes.

©2015 Osage County, Kansas Government.

Data sources: Osage County, Kansas Government, Kansas Geospatial Commons (DASC), U.S. Census.

For more maps and information resources, visit us at - <http://www.osage.kansasgis.com>

Street 2016 | Aerial 2014, Map Layers 11/15/2016